

Global Master Distributor for Eureka

A selection of the most
popular parts



*more original
than ever*

Eureka Original Spares



LF Code: 5065680
GEV Code: 525271

GRINDING BURRS PAIR EUREKA RH

external ø 74 mm
internal ø 37 mm
thickness 9 mm
3 fixing holes



LF Code: 5028534
GEV Code: 10103758

GRINDING BURRS PAIR EUREKA CONICAL RH

external ø 68/49 mm
internal ø 45/13 mm
thickness 25 mm
4 fixing holes



LF Code: 1251217
GEV Code: 10103761

GRINDING BURRS PAIR EUREKA RH

external ø 50 mm
internal ø 30 mm
thickness 7.5 mm
3 fixing holes



LF Code: 5158306
GEV Code: 10103775

GRINDING BURRS "DIAMOND INSIDE" 65 mm

DIAMOND INSIDE grinding burrs,
made with patented cryogenic
heat treatment at -193°C
for EUREKA Zenith 65 NEO
& Atom Specialty 65



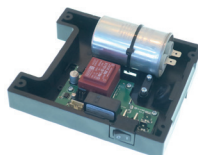
LF Code: 5188587
GEV Code: 10103787

FLAT GRINDING BURRS PAIR ø 75 mm REDSPEED



LF Code: 5099956
GEV Code: LF5099956

DISPLAY ELECTRONIC BOARD 230V



LF Code: 5169066
GEV Code: LF5169066

BASE UNIT 220V



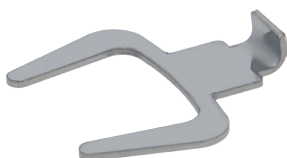
LF Code: 5188798
GEV Code: 10103936

CONTROL PANEL AT65/75 BLACK 110/220/230V



LF Code: 5166014
GEV Code: LF5166014

FILTER HOLDER FORK



LF Code: 5160768
GEV Code: LF5160768

FORK MIGNON FIXED



LF Code: 10102939
GEV Code: 10102939

CUP HOLDER FORK ROTAX LA SPAZIALE



LF Code: 5188647
GEV Code: 10103415

HOPPER FUME LOW ROUND COMPLETE



LF Code: 10103406
GEV Code: 10103406

HOPPER MCF LOWER EXT. PACK.



LF Code: 5164168
GEV Code: LF5164168

COFFEE HOPPER COMPLETE

coupling ø 52 mm
upper ø 180 mm
overall height 257 mm



LF Code: 5082386
GEV Code: LF5082386

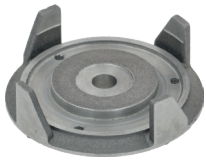
COFFEE HOPPER



LF Code: 1080251
GEV Code: LF1080251

LID FOR COFFEE HOPPER

Eureka Original Spares



LF Code: 5124227
GEV Code: 525744

**GRINDING BURRS HOLDER
LOWER MCF**



LF Code: 5192782
GEV Code: 10103127

**GRINDING BURRS HOLDER
COVER UPPER**



LF Code: 1343039
GEV Code: 525662

MIDDLE STAR



LF Code: 5052230
GEV Code: 704842

PAWL 6-TEETH



LF Code: 1095207
GEV Code: LF1095207

COFFEE CHUTE TUBE



LF Code: 5188827
GEV Code: 10103014

**FRONT PLATE PL CHROME-
PLATED FOR MIGNON V.1708**



LF Code: 1528182
GEV Code: LF1528182

SLIDE TAB KIT



LF Code: 5062149
GEV Code: LF5062149

**COUNTER FOR COFFEE
GRINDER**



LF Code: 1528038
GEV Code: 10103098

**GRINDING BURRS HOLDER
LOCKING NUT**



LF Code: 5118257
GEV Code: LF5118257

**SELECTOR SWITCH 380V OLY/
ZTH**



LF Code: 5188614
GEV Code: 10102875

**ROCKER SWITCH SINGLE-
PHASE LUMINOUS**



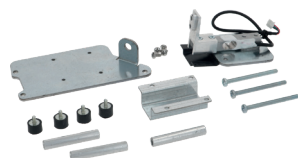
LF Code: 1319978
GEV Code: 10104103

**STABLE SWITCH BLUE FOR
ZTH/OLY NEO**



LF Code: 1050050
GEV Code: 720385

CABLES KIT HELIOS 65



LF Code: 1390286
GEV Code: LF1390286

LOAD CELL ATOM W 110 65/75



LF Code: 1068018
GEV Code: LF1068018

CAPACITOR 14 µF 450V

Eureka Original Accessories



LF Code: 3494009
GEV Code: LF3494009

MAT KIT FOR EUREKA MIGNON

dimensions 227x280 mm
made of silicone
compatible with all filter holders on the market.
Compatible with any Mignon model, customised with Mignon engraving on the surface and cleaning brush.



LF Code: 1494037
GEV Code: LF1494037

DOSING EUREKA CUP 45 GR

made of stainless steel
extremely compact (45 g)
designed to easily transfer freshly ground coffee into your filter holder, keeping your workspace neat and tidy.



LF Code: 1494054
GEV Code: LF1494054

FUNNEL FOR COFFEE GRINDER ø 57/58 mm



LF Code: 1017033
GEV Code: LF1017033

DIGITAL SCALE EUREKA PRECISA

Eureka Original Product



LF Code: 1235316
GEV Code: LF1235316

EUREKA BABY GRINDER NATURAL OLIVE

Easy to use thanks to grinder adjustment accessible from above.
Slim body for easy handling
Conical grinding burrs ø 48 mm
Height 200 mm
ø 56 mm





W75



