

# Official Spares Distributor for Rocket Espresso Milano

A selection of the most popular parts  
and accessories



100% original

# Rocket Espresso Milano Original Spares



REPA IT Code: 1165268  
REPA DE Code: LF1165268

## **FILTER HOLDER COMPLETE 1-CUP ROCKET**

spout connection  $\varnothing$  3/8"  
handle connection  
wings M12 5.7 mm  
with spring and filter 7 g



REPA IT Code: 1165383  
REPA DE Code: LF1165383

## **FILTER HOLDER WITHOUT BOTTOM ROCKET**

wings 5.7 mm sold in original  
ROCKET ESPRESSO packaging



REPA IT Code: 10196953  
REPA DE Code: 10196953

## **FILTER HOLDER ASSEMBLY INCLINED 2-WAY TCA**



REPA IT Code: 1192273  
REPA DE Code: LF1192273

## **OPERATING LEVER MICRO COMPLETE**



REPA IT Code: 5164558  
REPA DE Code: LF5164558

## **DISPLAY**

for machines manufactured  
from February 2021 with  
serial number from D2144  
onwards



REPA IT Code: 1319963  
REPA DE Code: LF1319963

## **PUSH-BUTTON PANEL FOR REMOTE CONTROL**



REPA IT Code: 1390164  
REPA DE Code: LF1390164

## **ELECTRONIC BOARD CPU**

for machines manufactured  
before May 2020 with machine  
code RE791R1A11 model  
LIV-RED1NA version V.6.10



REPA IT Code: 5166823  
REPA DE Code: LF5166823

## **BUTTON PANEL 6 BUTTONS**

for model BOXER  
dimensions 150x40 mm



REPA IT Code: 1057054  
REPA DE Code: LF1057054

## **SWITCH 0-2 POSITIONS 25A 690V**

square pin 5x5 mm



REPA IT Code: 1120397  
REPA DE Code: LF1120397

## **SOLENOID VALVE ODE 2-WAY $\varnothing$ 1/8" F 230V**

FKM seal - orifice  $\varnothing$  1.2 mm  
coil LBV05230AY 230/240V  
50/60Hz 5W



REPA IT Code: 1241263  
REPA DE Code: LF1241263

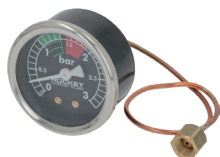
## **KNOB INSERT**



REPA IT Code: 10197057  
REPA DE Code: 10197057

## **KNOB CAP APPARTAMENTO TCA WITH LOGO**

with OR



REPA IT Code: 1245098  
REPA DE Code: LF1245098

## **BOILER PRESSURE GAUGE $\varnothing$ 52 mm 0-3 bar**

single scale 0-3 bar -  
connection  $\varnothing$  1/4" M  
frame  $\varnothing$  57 mm - body  $\varnothing$  52 mm



REPA IT Code: 1245116  
REPA DE Code: LF1245116

## **BOILER-PUMP PRESSURE GAUGE $\varnothing$ 60 mm**

double scale 0-2,5/0-16 bar  
connect.s  $\varnothing$  1/8" M  
frame  $\varnothing$  65 mm - body  $\varnothing$  60 mm



REPA IT Code: 1515042  
REPA DE Code: LF1515042

## **BOILER VALVE $\varnothing$ 3/8" M-1/2" M 1.5 bar**

set press. 1.5bar - steam disch.  
rate 52.28Kg/hh - FKM seal  
operating temp. -20/+200°C  
valve CE/PED certified



REPA IT Code: 1548090  
REPA DE Code: LF1548090

## **STEAM TAP COMPLETE**

rear connection  $\varnothing$  1/4" M hole for  
knob 7x7 mm - pin for screw M6

# Rocket Espresso Milano Original Spares



REPA IT Code: 1548093  
REPA DE Code: LF1548093

## WATER/STEAM TAP

rear connection  $\varnothing 1/4"$ M - with  
ogive steam pipe  
connection  $\varnothing 3/8"$ M



REPA IT Code: 1720048  
REPA DE Code: LF1720048

## NON-REFLECTION VALVE $\varnothing 1/8"$ M- $1/8"$ M NPT

connections  $\varnothing 1/8"$ M conical  
NPT



REPA IT Code: 1755389  
REPA DE Code: LF1755389

## HEATING ELEMENT 1000W 230V



REPA IT Code: 5833632  
REPA DE Code: 10197828

## PUMP 104 L



REPA IT Code: 1192272  
REPA DE Code: LF1192272

## SLEEVE CHROME-PLATED UPPER CERAMIC



REPA IT Code: 1024015  
REPA DE Code: LF1024015

## BOILER SERVICES



REPA IT Code: 1319899  
REPA DE Code: LF1319899

## LEVER SWITCH 2-POLE 15A 250V

2NO - ON/OFF function faston  
contacts 6.3x0.8 mm  
thread M12x0.75



REPA IT Code: 1320040  
REPA DE Code: LF1320040

## PRESSURE SWITCH XP110 125 0.5-1.2 BAR 1/4"

connection  $\varnothing 1/4"$ M - 15A  
125/250V pre-calib. 1.1bar



REPA IT Code: 1486067  
REPA DE Code: LF1486067

## FILTER HOLDER GASKET $\varnothing$ 73x57x8 mm



REPA IT Code: 1192277  
REPA DE Code: LF1192277

## DELIVERY VALVE COMPLETE

round pin, overall length 55 mm  
for dispensing unit



REPA IT Code: 1221110  
REPA DE Code: LF1221110

## INDICATOR LIGHT GREEN 125/250V

head  $\varnothing 12.3$  mm - hole  $\varnothing 10$  mm



# Rocket Espresso Milano Original Accessories



REPA IT Code: 1224052  
REPA DE Code: LF1224052

## MILK PITCHER ROCKET 0.50 L

stainless steel 18/10 - Aisi 304  
sold in original  
ROCKET ESPRESSO packaging



REPA IT Code: 1224055  
REPA DE Code: LF1224055

## MILK PITCHER ROCKET BLACK 0.50 L

stainless steel 18/10 - Aisi 304  
sandblasted inside finish  
painted exterior sold in original  
ROCKET ESPRESSO packaging



REPA IT Code: 1385141  
REPA DE Code: LF1385141

## COFFEE LEVELER ROCKET ø 58 mm

model 2 in 1 tamper ø 58 mm  
one side, leveller ø 58 mm  
other side  
both height-adjustable  
body ø 64 mm - body black  
sold in original ROCKET  
ESPRESSO packaging



REPA IT Code: 1385139  
REPA DE Code: LF1385139

## TAMPER OF STEEL ROCKET ø 58 mm

flat pressing surface  
sold in original  
ROCKET ESPRESSO packaging



REPA IT Code: 1480027  
REPA DE Code: LF1480027

## KNOCKBOX OF STAINLESS STEEL

external ø 105 mm - height 148  
mm  
sold in original ROCKET  
ESPRESSO packaging



REPA IT Code: 1494028  
REPA DE Code: LF1494028

## SUPPORT MAT FOR TAMPER/FILTER HOLDER

dimensions 205x147x35 mm  
sold in original  
ROCKET ESPRESSO packaging



REPA IT Code: 1385138  
REPA DE Code: LF1385138

## FILTER HOLDER SUPPORT

st./steel and rubber dimensions  
175x140xh60 mm  
sold in original ROCKET  
ESPRESSO packaging



REPA IT Code: 1494030  
REPA DE Code: LF1494030

## FUNNEL FOR COFFEE GRINDER ROCKET 15 mm

material aluminium colour matt  
black - thickness 15 mm  
ø outside 79 mm - ø inside 60.5  
mm - for ø 70 mm filters  
magnetic base sold in original  
ROCKET ESPRESSO packaging



REPA IT Code: 1494032  
REPA DE Code: LF1494032

## APRON ROCKET DOUBLE FACE

Durable cloth bartender's apron.  
Reversible.  
Black leather straps.  
Lower width 680 mm  
upper width 210 mm  
height 740 mm  
sold in original ROCKET  
ESPRESSO packaging





