



# COMMERCIAL CATERING AND REFRIGERATION

*Be ready with our range  
of spare parts, consumables  
and accessories*

LET'S  
RESTART  
TOGETHER





# TABLE OF CONTENTS

OVENS	4	FRYERS	35
CLEANING AND SANITIZING PRODUCTS	5	CLEANING AND SANITIZING PRODUCTS	36
TOOLS AND CONSUMABLES	7	TOOLS AND CONSUMABLES	38
ACCESSORIES	8	ACCESSORIES	39
EXTRAORDINARY MAINTENANCE	9	EXTRAORDINARY MAINTENANCE	40
REFRIGERATION	11	PASTA COOKERS	42
CLEANING AND SANITIZING PRODUCTS	12	CLEANING AND SANITIZING PRODUCTS	43
TOOLS AND CONSUMABLES	13	TOOLS AND CONSUMABLES	44
ACCESSORIES	14	ACCESSORIES	45
EXTRAORDINARY MAINTENANCE	15	EXTRAORDINARY MAINTENANCE	46
DISHWASHING	17	FOOD PROCESSING	48
CLEANING AND SANITIZING PRODUCTS	18	ACCESSORIES	49
TOOLS AND CONSUMABLES	20	BLADES FOR MEAT SLICERS	51
ACCESSORIES	21	SPARES	52
EXTRAORDINARY MAINTENANCE	23	SNACKING	55
TOP COOKERS	28	CLEANING AND SANITIZING PRODUCTS	56
CLEANING AND SANITIZING PRODUCTS	29	TOOLS AND CONSUMABLES	58
TOOLS AND CONSUMABLES	31	ACCESSORIES	59
ACCESSORIES	32	EXTRAORDINARY MAINTENANCE	60
EXTRAORDINARY MAINTENANCE	33		



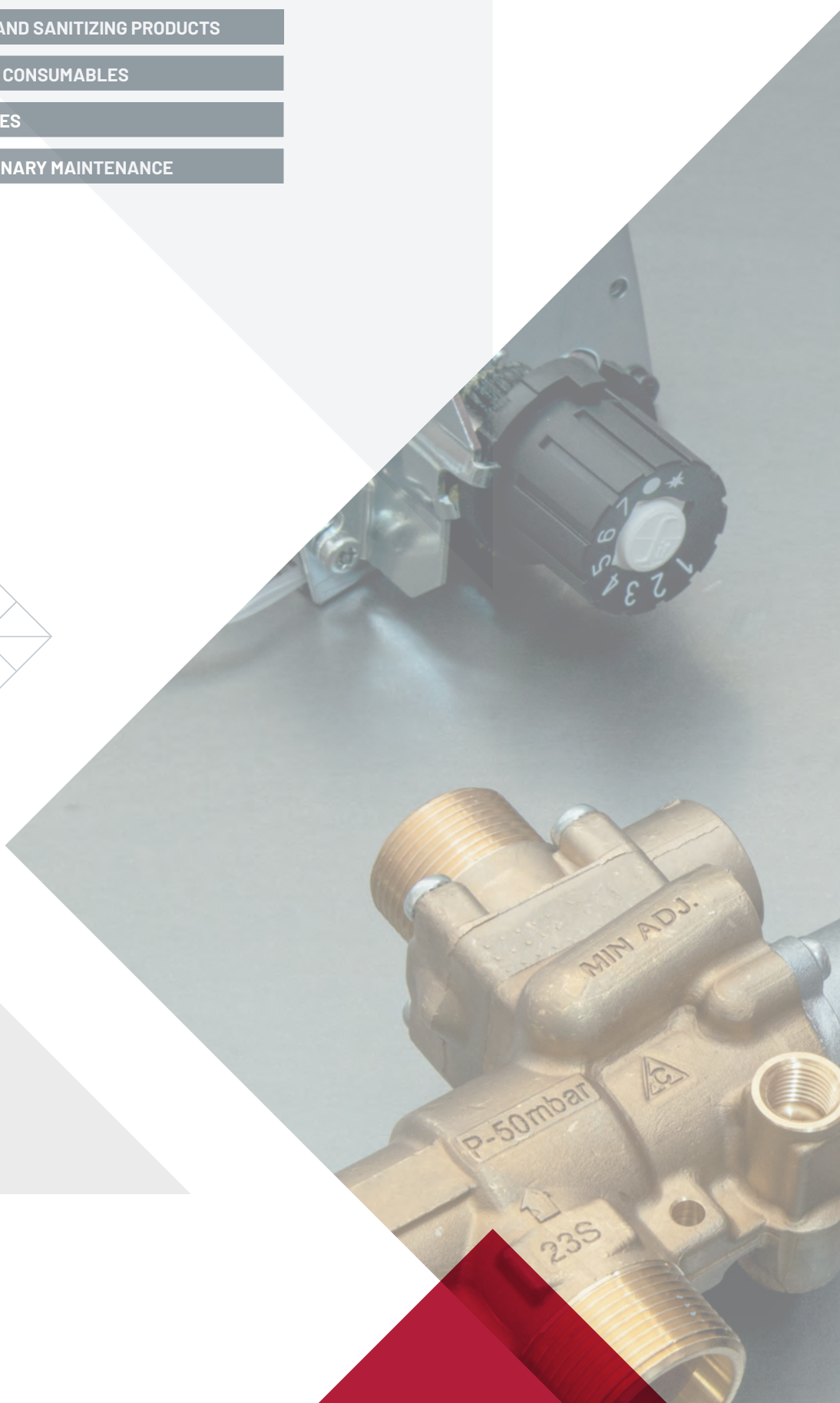
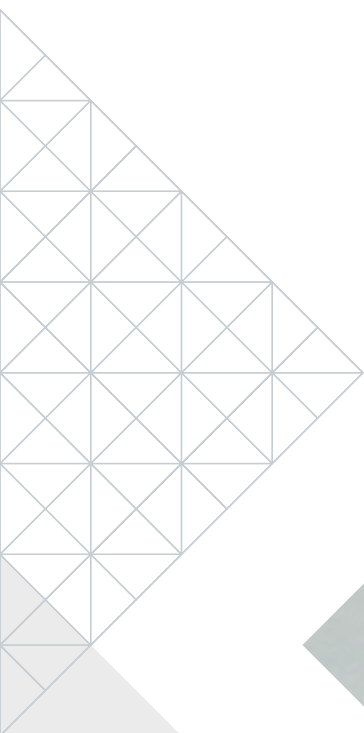
# Ovens

CLEANING AND SANITIZING PRODUCTS

TOOLS AND CONSUMABLES

ACCESSORIES

EXTRAORDINARY MAINTENANCE



# OVENS CLEANING AND SANITIZING PRODUCTS



LF Code: 3092039  
GEV Code: 802235

## SCALE REMOVER BOILER CLEANER 10 kg

strong-acting, complete with exhaustion indicator  
for the removal of limescale and corrosion residue in machines such as heat exchangers, in breakfast milk dispensers or copper cooling circuits  
it contains special damping, antifoaming and corrosion-inhibiting agents.



LF Code: 5098361  
GEV Code: 802065

## SCALE REMOVER CALFREE 10L TANK

specially designed to remove limescale residue from steam generators



LF Code: 3092187  
GEV Code: LF3092187

## DEGREASING DETERGENT ND-150 EXTRA 5 L

food-safe  
for the removal of grease, oil, wax, ink, mould and every other residue that is hard to remove, to be diluted 1:5 up to 1:50  
not flammable  
ideal for the cleaning of fryers after they have been emptied, for hood filters for washing station etc.



LF Code: 3092022  
GEV Code: 802119

## ALKALINE DEGREASER FORT HDSpray 750 ml

for the cleaning of FIXED parts  
This product contains 90% biodegradable anionic and nonionic surface-active agents. It is an alkaline product for the removal of stubborn deposits of baked-on greases and mineral, grease from hot plates, ovens, grills and hoods



LF Code: 3092279  
GEV Code: LF3092279

## CORROSIVE LIQUID OVEN DETERGENT 12kg

for cooking chamber cleaning



LF Code: 3092186  
GEV Code: 890338

## DEGREASING DETERGENT ND-150 EXTRA 1 L

food-safe  
for the removal of grease, oil, wax, ink, mould and every other residue that is hard to remove, to be diluted 1:5 up to 1:50  
not flammable; ideal for the cleaning of fryers after they have been emptied, for hood filters, for washing station etc.



LF Code: 3092288  
GEV Code: LF3092288

## MULTIPURP. DETERGENT SPLENDIVETRO 750 ml

for glass cleaning  
for the cleaning of any washable surface  
highly anti-static and dustproof



LF Code: 3092069  
GEV Code: LF3092069

## STAINLESS STEEL CLEANER 500 ml

for cleaning of stainless steel, chrome, brass, enamelled metal surfaces, light alloys and non-ferrous metals  
can be used in food environments  
avoid direct contact with food



LF Code: 3092214  
GEV Code: LF3092214

## DETERGENT STAINLESS STEEL SPRAY 500 ml

to restore stainless steel surfaces  
protects and polishes surfaces

# OVENS CLEANING AND SANITIZING PRODUCTS



LF Code: 3092267  
GEV Code: 890023

---

## DETERGENT FOR STAINL. STEEL WÜRTH 400ml

---



LF Code: 3092226  
GEV Code: LF3092226

---

## LIQUID DISINFECTANT DETERGENT 5 L

---

100% biodegradable  
Recommended for floors, walls, working surfaces, evaporators, etc.  
Removes all organic residue (even if encrusted)  
Ensures perfect surface hygienisation  
Non-aggressive for the user  
Prevents pipe clogging thanks to the continuous enzymatic action  
Dosage: 1% in hot water



LF Code: 3092330  
GEV Code: LF3092330

---

## DETERGENT DISINFECTANT 750 ml

---

for cleaning, degreasing, polishing and sanitizing  
all equipment, tops and surfaces.  
It is specific to clean and sanitize hospitals, retirement homes, schools and gyms, besides industrial, food and catering sector



LF Code: 3394361  
GEV Code: 890206

---

## CONTACTS CLEANER SPRAY KD/E/2S 200 ml

---

specific product to degrease and clean all the electric contacts, suit. for UHF and VHF groups, electronic components, micro-mechanisms of high precision, it does not corrode nor leaves residues, it does not oxidise treated parts.

# OVENS TOOLS AND CONSUMABLES



LF Code: 3394551  
GEV Code: LF3394551

## TOTAL HARDNESS ANALYSIS TEST KIT



LF Code: 3180102  
GEV Code: 890101

## SILICONE GREASE 150 g

to lubricate taps, valves, pumps  
to grease bearings and threadings  
hot and cold water resistant  
water-repellent



LF Code: 3180052  
GEV Code: 890015

## RED HIGH TEMPERATURE SEALER 280 ml

operating temperature -65+260°C with  
peaks 320°C  
for OVEN GASKETS



LF Code: 1180001  
GEV Code: LF1180001

## GREASE KLUBERSYNTH UH1 14-151 45 g

food safe grease for lubrication  
of all friction points  
ideal for water and steam taps  
operating temperature -45°/+120°  
beige color - NSF H1 certified  
hot and cold water resistant  
high anti-corrosion power  
can replace vaseline



LF Code: 3092177  
GEV Code: LF3092177

## GREASE MOLYKOTE1102 50 g

for gas valves and taps  
max operating temperature +175°C

## OVENS ACCESSORIES



LF Code: 3010241  
GEV Code: LF3010241



LF Code: 3010242  
GEV Code: LF3010242



LF Code: 3010243  
GEV Code: LF3010243

### **WATER SOFTENER "ECO 8"** **8 L ø 3/4"**

for water treatment for TECHNICAL purposes  
AUTOTROL digital head 366/604  
timer 604 6W 230V 50/60Hz  
connection 3/4"  
dimensions: width 225 mm,  
height 415 mm  
depth 375 mm  
resin content 5.4 kg  
regeneration salt(NaCl-table salt)0.5 kg  
brine salt 10 kg  
operating temperature 2°÷35°C  
pressure: min 2 bar - max 8 bar

### **WATER SOFTENER "ECO 12"** **12 L ø 3/4"**

for water treatment for TECHNICAL purposes  
AUTOTROL digital head 366/604  
timer 604 6W 230V 50/60Hz  
connection 3/4"  
dimensions: width 260 mm,  
height 440 mm  
depth 450 mm  
resin content 5.6 kg  
regeneration salt(NaCl-table salt)1 kg  
brine salt 20 kg  
operating temperature 2°÷35°C  
pressure: min 2 bar - max 8 bar

### **WATER SOFTENER "ELETTRONIC 8"** **8 L ø 3/4"**

for water treatment for TECHNICAL purposes  
AUTOTROL digital head 255  
timer LOGIX 740 4W 230V 50/60Hz  
complete with mixer ø 3/4"  
connection 3/4"  
dimensions: width 200 mm, height 540 mm  
depth 410 mm  
resin content 5.6 kg  
regeneration salt(NaCl-table salt)1 kg  
brine salt 20 kg  
operating temperature 2°÷35°C  
pressure: min 2 bar - max 8 bar



LF Code: 3010267  
GEV Code: 520136



LF Code: 3010300  
GEV Code: 530238

### **RESIN 25 L**

25 L package

### **SALT FOR WATER SOFTNER IN TABLETS 25 kg**

FOR WATER SOFTENING SYSTEMS



LF Code: 3185052  
GEV Code: 971186



LF Code: 3185053  
GEV Code: 970123

### **STAINLESS STEEL GRID GN 1/1** **530x325 mm**

thickness 7 mm

### **STAINLESS STEEL GRID GN 2/1** **650x530 mm**



# OVENS EXTRAORDINARY MAINTENANCE



LF Code: 7115455  
GEV Code: 900750

## GASKET FOR OVEN DOOR GREY/BLUE

of silicone elastomer  
profile dimensions 30x19 mm  
GREY COLOUR/BLUE  
SALE PER LINEAR METRE



LF Code: 5006659  
GEV Code: 902221

## GASKET FOR OVEN DOOR 500x470 mm

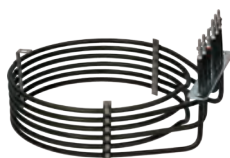
made of silicone elastomer  
profile dimensions 28,5x13 mm  
COLOUR BLACK



LF Code: 5012477  
GEV Code: 902337

## GASKET FOR OVEN DOOR 755x470 mm

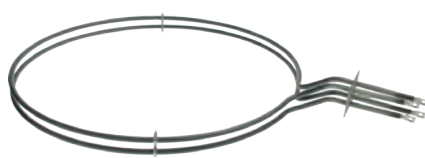
made of silicone elastomer  
profile dimensions 28,5x13 mm  
BLACK COLOUR



LF Code: 3755206  
GEV Code: 418196

## HEATING ELEMENT 6000W 230V

external  $\varnothing$  230 mm - internal  $\varnothing$  218 mm  
total height 130 mm  
flange 140x25 mm



LF Code: 3755239  
GEV Code: 415654

## HEATING ELEMENT 5666W 230V

external  $\varnothing$  480 mm - internal  $\varnothing$  465 mm  
total height 65 mm  
flange 80x45 mm



LF Code: 3755240  
GEV Code: 415690

## HEATING ELEMENT 9000W 230V

immersed depth 290 mm  
flange external  $\varnothing$  63 mm  
with bulb sheath - complete with O-ring



LF Code: 7113555  
GEV Code: 370744

## ELECTRO VALVE RPE 220/240V $\varnothing$ 11 mm

solenoid valve 180°  
220/240V 50/60Hz - max 90°C  
inlet 3/4" - outlet  $\varnothing$  11 mm



LF Code: 3120283  
GEV Code: 374032

## SOLENOID VALVE RPE 230V $\varnothing$ 10 mm

solenoid valve 180° - 230V 50/60Hz  
max 60°C inlet 3/4" - two outlets  $\varnothing$  10 mm  
1 outlet with adjusters - brown  
1 outlet with adjusters - red



LF Code: 3120550  
GEV Code: 370267

## SOLENOID VALVE ROBERTSHAW 1 WAY 180°

240V 50/60Hz 6W  
max. temperature 90°C  
inlet 3/4" - outlet  $\varnothing$  10.5 mm



LF Code: 3120404  
GEV Code: 370015

## SOLENOID VALVE T&P 1 WAY 90°

230V 50/60Hz  
max. temperature 90°C  
inlet 3/4" con riduttore di portata 10 L/min  
outlet  $\varnothing$  10.5 mm

SEE COMPLETE LISTING ON WEBSITE  
[WWW.GEV-ONLINE.COM](http://WWW.GEV-ONLINE.COM)  
[WWW.LFSPAREPARTS724.COM](http://WWW.LFSPAREPARTS724.COM)

# OVENS EXTRAORDINARY MAINTENANCE



LF Code: 3221382  
GEV Code: 359946

## NEUTRAL HALOGEN LAMP G9 40W 230V

max. temperature 250°C



LF Code: 3221105  
GEV Code: 357193

## NEUTRAL HALOGEN LAMP G4 20W 12V

max temperature 250°C



LF Code: 3221061  
GEV Code: 360663

## LAMP E14 25W 230V

max temperature 300°C - ø 26x57 mm



LF Code: 3122406  
GEV Code: 500573

## DRAIN PUMP HANNING DPS25-032

30W 220/240V 50Hz - supplied with 2 extra pump bodies and RAST5 adjuster  
inlet outer ø 23÷28 mm  
outlet outer ø 23 mm



LF Code: 3331003  
GEV Code: 499142

## VIBRATORY PUMP CP.06

70W 220/230V 60Hz  
connections ø 7.5 mm - ø 8 mm



LF Code: 3331006  
GEV Code: 500568

## SET VIBRATORY PUMP 32W 220/240V

50/60Hz - fittings ø 1/8" - ø 7 mm  
PUMP CEME E51210EN02240C3

# REFRIGERATION

CLEANING AND SANITIZING PRODUCTS

TOOLS AND CONSUMABLES

ACCESSORIES

EXTRAORDINARY MAINTENANCE



# REFRIGERATION CLEANING AND SANITIZING PRODUCTS



LF Code: 3092354  
GEV Code: LF3092354

## SANIBACT DISINFECTANT CONCENTRATED 1 L

bactericidal and yeasticidal disinfectant  
concentrated - dilution 1:25  
complies with EN1276 - EN13697 tests  
(bacteria)  
complies with EN13697 test (moulds)  
effective against viruses in the  
CORONAVIRUS - family and hepatitis B/C  
for use on evaporators and all surfaces



LF Code: 3092256  
GEV Code: 801490

## DETERGENT GASKET CARE 1 L

cleans and sanitizes refrigerator  
internal parts and gaskets



LF Code: 3092247  
GEV Code: 801490

## DETERGENT GASKET CLEAN 500 ml

cleans and sanitizes refrigerator  
internal parts and gaskets



LF Code: 3092016  
GEV Code: LF3092016

## DETERGENT DS-3 PERGEL 1 kg

for ice makers  
non-corrosive to metals  
eliminates limescale  
it does not release irritating gas or vapours  
it contains phosphoric acid and lactic acid  
corrosive



LF Code: 5061727  
GEV Code: LF5061727

## DETERGENT URNEX FREEZ 414 ml

suitable for ice makers  
non-corrosive to metals  
it restores the machine's efficiency  
by removing any limescale buildup  
it contains irritating citric acid - irritant



LF Code: 3092288  
GEV Code: LF3092288

## MULTIPURP. DETERGENT SPLENDIVETRO 750 ml

for glass cleaning  
for the cleaning of any washable surface  
highly anti-static and dustproof



LF Code: 3092290  
GEV Code: LF3092290

## DISINFECTANT DETERGENT SANITRE 1 L

amphoteric sanitizer for food surfaces  
for the cleaning and sanitizing of floors,  
worktops and food equipment  
Reg. N°19277 of the Italian Ministry of  
Health



LF Code: 3092069  
GEV Code: LF3092069

## STAINLESS STEEL CLEANER 500 ml

for cleaning of stainless steel, chrome,  
brass, enamelled metal surfaces,  
light alloys and non-ferrous metals  
can be used in food environments  
avoid direct contact with food



LF Code: 3394361  
GEV Code: 890206

## CONTACTS CLEANER SPRAY KD/E/2S 200 ml

specific product to degrease and clean all  
the electric contacts, suit. for UHF and VHF  
groups, electronic components, micro-  
mechanisms of high precision, it does not  
corrode nor leaves residues, it does not  
oxidise treated parts.



LF Code: 3092064  
GEV Code: 890337

---

## **MAGIC SPONGE 100x60x25 mm - 30 PIECES**

for all hard surfaces, such as steel and  
marble  
antibacterial action reduces bacteria by  
99.99%  
30 pcs PACKAGE  
please see the attached documentation for use



LF Code: 3180043  
GEV Code: 890217

---

## **OIL FOOD-GRADE SPRAY WÜRTH 300 ml**

colourless and odourless powerful  
lubricant - to be used in the food and  
beverage sector, non-toxic, harmless to  
skin and protects from corrosion,  
waterproof.  
compatible w/aluminium, stainless steel,  
plastic - operating temperature -10+180°C  
NSF certified

# REFRIGERATION ACCESSORIES



LF Code: 3010241  
GEV Code: LF3010241



LF Code: 3010242  
GEV Code: LF3010242



LF Code: 3010243  
GEV Code: LF3010243

## WATER SOFTENER "ECO 8" 8 L ø 3/4"

for water treatment for TECHNICAL purposes  
AUTOTROL digital head 366/604  
timer 604 6W 230V 50/60Hz  
connection 3/4"  
dimensions: width 225 mm, height 415 mm  
depth 375 mm  
resin content 5.4 kg  
regeneration salt(NaCl-table salt)0.5 kg  
brine salt 10 kg  
operating temperature 2°÷35°C  
pressure: min 2 bar - max 8 bar

## WATER SOFTENER "ECO 12" 12 L ø 3/4"

for water treatment for TECHNICAL purposes  
AUTOTROL digital head 366/604  
timer 604 6W 230V 50/60Hz  
connection 3/4"  
dimensions: width 260 mm, height 440 mm  
depth 450 mm  
resin content 5.6 kg  
regeneration salt(NaCl-table salt)1 kg  
brine salt 20 kg  
operating temperature 2°÷35°C  
pressure: min 2 bar - max 8 bar

## WATER SOFTENER "ELETTRONIC 8" 8 L ø 3/4"

for water treatment for TECHNICAL purposes  
AUTOTROL digital head 255  
timer LOGIX 740 4W 230V 50/60Hz  
complete with mixer ø 3/4"  
connection 3/4"  
dimensions: width 200 mm, height 540 mm  
depth 410 mm  
resin content 5.6 kg  
regeneration salt(NaCl-table salt)1 kg  
brine salt 20 kg  
operating temperature 2°÷35°C  
pressure: min 2 bar - max 8 bar



LF Code: 3010267  
GEV Code: 520136



LF Code: 3010300  
GEV Code: 530238



LF Code: 3185052  
GEV Code: 971186

## RESIN 25 L

25 L package

## SALT FOR WATER SOFTNER IN TABLETS 25 kg

FOR WATER SOFTENING SYSTEMS

## STAINLESS STEEL GRID GN 1/1 530x325 mm

thickness 7 mm



LF Code: 3185053  
GEV Code: 970123



LF Code: 3185184  
GEV Code: 970125



LF Code: 3185050  
GEV Code: 970556

## STAINLESS STEEL GRID GN 2/1 650x530 mm

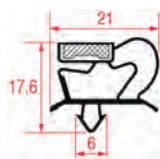
## GRID PLASTIC-COATED GN 1/1 530x325 mm

white colour

## GRID PLASTIC-COATED GN 2/1 650x530 mm

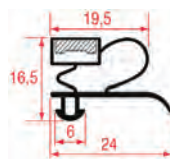
white colour

# REFRIGERATION EXTRAORDINARY MAINTENANCE



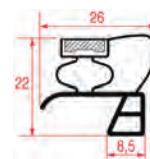
LF Code: 2110446  
GEV Code: LF2110446

## SNAP-IN GASKET 595x405 mm



LF Code: 3186876  
GEV Code: 902167

## SNAP-IN GASKET 1003 LENGTH 2000 mm



LF Code: 3186955  
GEV Code: 900025

## SNAP IN GASKET 400x300 mm

for REFRIGERATED TABLES



LF Code: 3355698  
GEV Code: 420372

## HEATING ELEMENT FOR DOOR 3000 mm

54W 230V - silicone insulation  $\varnothing$  3 mm  
electric cable length 1000 mm



LF Code: 3455430  
GEV Code: LF3455430

## HEATING ELEMENT RCE 051 250W 230V

345x50x115 mm



LF Code: 3355688  
GEV Code: 418856

## HEATING ELEMENT FOR TRAY 200W 220V

thermostat 130°C  
210x117 mm



LF Code: 3240910  
GEV Code: 601020

## MOTOR WEIGUANG YZF 5-13 5 FAST. METHODS

230V 50/60Hz 5W 1300rpm



LF Code: 3240911  
GEV Code: 601022

## MOTOR WEIGUANG YZF 10-20 5 FAST. METHODS

230V 50/60Hz 10W 1300rpm



LF Code: 3240912  
GEV Code: 601023

## MOTOR WEIGUANG YZF 16-25 5 FAST. METHODS

230V 50/60Hz 16W 1300rpm



LF Code: 3240913  
GEV Code: 601024

## MOTOR WEIGUANG YZF 25-40 5 FAST. METHODS

230V 50/60Hz 25W 1300rpm

SEE COMPLETE LISTING ON WEBSITE  
[WWW.GEV-ONLINE.COM](http://WWW.GEV-ONLINE.COM)  
[WWW.LFSPAREPARTS724.COM](http://WWW.LFSPAREPARTS724.COM)

# REFRIGERATION EXTRAORDINARY MAINTENANCE



LF Code: 3120404  
GEV Code: 370015



LF Code: 3120405  
GEV Code: 370017



LF Code: 3120406  
GEV Code: 370019

## SOLENOID VALVE T&P 1 WAY 90°

230V 50/60Hz - max. temperature 90°C  
inlet 3/4" con riduttore di portata 10 L/min  
outlet ø 10.5 mm

## SOLEN. VALVE T&P 1 WAY 180°

230V 50/60Hz - max. temperature 90°C  
inlet 3/4" - outlet ø 10.5 mm

## SOLEN. VALVE T&P 2 WAY 90°

230V 50/60Hz - max. temperature 90°C  
inlet 3/4" - two outlets ø 10.5 mm



LF Code: 3120407  
GEV Code: 370021



LF Code: 1240283  
GEV Code: 345042



LF Code: 3240123  
GEV Code: 527736

## SOLEN. VALVE T&P 2 WAY 180°

230V 50/60Hz - max. temperature 90°C  
inlet 3/4" - two outlets ø 10.5 mm

## MICROSWITCH CROUZET EF83161.3

1NO+1NC 16A 250V - faston 6.3x0.8 mm  
standard  
operating force max 0.8N - min 0.2N

## MICROSWITCH ROLD VRSRB1DA1

16A 250V



LF Code: 5026552  
GEV Code: 359728



LF Code: 3221041  
GEV Code: 359740



LF Code: 3221061  
GEV Code: 360663

## HALOGEN LAMP OSRAM E14 40W 230V

dimensions 80x26 mm  
max temperature 300°C

## LAMP E14 15W 230V

max temperature 300°C - dimensions ø  
22x50 mm

## LAMP E14 25W 230V

max temperature 300°C - ø 26x57 mm



# DISHWASHING

CLEANING AND SANITIZING PRODUCTS

TOOLS AND CONSUMABLES

ACCESSORIES

EXTRAORDINARY MAINTENANCE



# DISHWASHING CLEANING AND SANITIZING PRODUCTS



LF Code: 3092039  
GEV Code: 802235

## SCALE REMOVER BOILER CLEANER 10 kg

strong-acting, complete with exhaustion indicator  
for the removal of limescale and corrosion residue in machines such as heat exchangers, in breakfast milk dispensers or copper cooling circuits  
it contains special damping, antifoaming and corrosion-inhibiting agents.



LF Code: 3092095  
GEV Code: LF3092095

## SCALE REMOVER ASCOR PRN 6kg

for boilers - elements - refrigerating circuits



LF Code: 3092066  
GEV Code: 802118

## SCALE REMOVER CALCINET 1 kg

removes scale residues from DISHWASHERS, HEAT EXCHANGERS and scaly elements  
it does not damage rubber gaskets



LF Code: 3092069  
GEV Code: LF3092069

## STAINLESS STEEL CLEANER 500 ml

for cleaning of stainless steel, chrome, brass, enamelled metal surfaces, light alloys and non-ferrous metals  
can be used in food environments  
avoid direct contact with food



LF Code: 3092214  
GEV Code: LF3092214

## DETERGENT STAINLESS STEEL SPRAY 500 ml

to restore stainless steel surfaces  
protects and polishes surfaces



LF Code: 3092267  
GEV Code: 890023

## DETERGENT FOR STAINL. STEEL WÜRTH 400ml



LF Code: 3092226  
GEV Code: LF3092226

## LIQUID DISINFECTANT DETERGENT 5 L

100% biodegradable  
Recommended for floors, walls, working surfaces, evaporators, etc.  
Removes all organic residue (even if encrusted)  
Ensures perfect surface hygienisation  
Non-aggressive for the user  
Prevents pipe clogging thanks to the continuous enzymatic action  
Dosage: 1% in hot water



LF Code: 3092290  
GEV Code: LF3092290

## DISINFECTANT DETERGENT SANITRE 1 L

amphoteric sanitizer for food surfaces  
for the cleaning and sanitizing of floors, worktops and food equipment  
Reg. N°19277 of the Italian Ministry of Health



LF Code: 3092330  
GEV Code: LF3092330

## DETERGENT DISINFECTANT 750 ml

for cleaning, degreasing, polishing and sanitizing  
all equipment, tops and surfaces.  
It is specific to clean and sanitize hospitals, retirement homes, schools and gyms, besides industrial, food and catering sector



LF Code: 3394361  
GEV Code: 890206

---

## **CONTACTS CLEANER SPRAY KD/E/2S 200 ml**

---

specific product to degrease and clean all the electric contacts, suit. for UHF and VHF groups, electronic components, micro-mechanisms of high precision, it does not corrode nor leaves residues, it does not oxidise treated parts.

# DISHWASHING TOOLS AND CONSUMABLES



LF Code: 3392004  
GEV Code: 890106

## SILICONE TRANSPARENT SEALANT TB40

90g tube  
temperature range -40°C to +160°C



LF Code: 3392006  
GEV Code: LF3392006

## TRANSPARENT SILICONE LOCTITE 310 ml

suitable for gluing and sealing  
in the industry(glass gluing-oven sealing)  
operating temperature -60+250°C



LF Code: 3180102  
GEV Code: 890101

## SILICONE GREASE 150 g

to lubricate taps, valves, pumps, to grease  
bearings and threadings - hot and cold  
water resistant, water-repellent



LF Code: 3092020  
GEV Code: LF3092020

## RINSE AID BRILLER LP 5L DRUM

it helps fast drying and makes  
plates and glasses even shinier  
It contains 80% biodegradable nonionic  
detergents  
please see the attached documentation for use



LF Code: 3092272  
GEV Code: LF3092272

## RINSE AID SHINE CLEAN 5 kg

Automatic dosage 0.1%-1%  
Rinse aid that helps dish drying  
of dishes. Professional use  
please see the attached documentation for use



LF Code: 3092273  
GEV Code: LF3092273

## RINSE AID SHINE CLEAN 10 kg

Automatic dosage 0.1%-1%  
Rinse aid that helps dish drying  
of dishes. Professional use  
please see the attached documentation for use



LF Code: 3092270  
GEV Code: LF3092270

## DETERGENT CLEAR CLEAN 6 kg

Professional use, specific for dishwashers  
glass washers with strong descaling action  
Rinse after use  
please see the attached documentation for use



LF Code: 3092271  
GEV Code: LF3092271

## DETERGENT CLEAR CLEAN 12 kg

Professional use, specific for dishwashers  
glass washers with strong descaling action  
Rinse after use  
please see the attached documentation for use



LF Code: 3092274  
GEV Code: LF3092274

## DETERGENT CLEAR CLEAN PLUS 6 kg

Containing Chlorine, specific for dishwash-  
ers, glass washers  
Strong rinse aid and descaling action  
Professional use rinse after use  
please see the attached documentation for use



LF Code: 3092275  
GEV Code: LF3092275

## DETERGENT CLEAR CLEAN PLUS 12 kg

Containing Chlorine, specific for dishwash-  
ers, glass washers  
Strong rinse aid and descaling action  
Professional use rinse after use  
please see the attached documentation for use



LF Code: 3394551  
GEV Code: LF3394551

## TOTAL HARDNESS ANALYSIS TEST KIT

# DISHWASHING ACCESSORIES



LF Code: 3055454  
GEV Code: 972100

## GLASS RACK 500x500x106 mm



LF Code: 3055451  
GEV Code: 972102

## PLATE RACK 500x500x106 mm

18 PLATES - 12 BOWLS  
plastic



LF Code: 3055453  
GEV Code: 972104

## TRAYS BASKET 500x500x106 mm



LF Code: 3055557  
GEV Code: 972102

## DISH RACK 500x500x100 mm

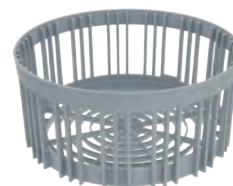
plastic



LF Code: 5110619  
GEV Code: 972100

## BASKET MISC. ITEMS CAMBRO 500x500x101 mm

plastic - large-size mesh bottom  
height 83 mm



LF Code: 3055482  
GEV Code: 970828

## GLASS RACK ø 355x160 mm

bottom ring ø 280 mm



LF Code: 3055491  
GEV Code: 972035

## CUTLERY RACK 450x230x130 mm

of plastic

# DISHWASHING ACCESSORIES



LF Code: 3010241  
GEV Code: LF3010241



LF Code: 3010242  
GEV Code: LF3010242



LF Code: 3010243  
GEV Code: LF3010243

## WATER SOFTENER "ECO 8" 8 L ø 3/4"

for water treatment for TECHNICAL purposes  
AUTOTROL digital head 366/604  
timer 604 6W 230V 50/60Hz  
connection 3/4"  
dimensions: width 225 mm,  
height 415 mm  
depth 375 mm  
resin content 5.4 kg  
regeneration salt(NaCl-table salt)0.5 kg  
brine salt 10 kg  
operating temperature 2°÷35°C  
pressure: min 2 bar - max 8 bar

## WATER SOFTENER "ECO 12" 12 L ø 3/4"

for water treatment for TECHNICAL purposes  
AUTOTROL digital head 366/604  
timer 604 6W 230V 50/60Hz  
connection 3/4"  
dimensions: width 260 mm,  
height 440 mm  
depth 450 mm  
resin content 5.6 kg  
regeneration salt(NaCl-table salt)1 kg  
brine salt 20 kg  
operating temperature 2°÷35°C  
pressure: min 2 bar - max 8 bar

## WATER SOFTENER "ELETTRONIC 8" 8 L ø 3/4"

for water treatment for TECHNICAL purposes  
AUTOTROL digital head 255  
timer LOGIX 740 4W 230V 50/60Hz  
complete with mixer ø 3/4"  
connection 3/4"  
dimensions: width 200 mm, height 540 mm  
depth 410 mm  
resin content 5.6 kg  
regeneration salt(NaCl-table salt)1 kg  
brine salt 20 kg  
operating temperature 2°÷35°C  
pressure: min 2 bar - max 8 bar



LF Code: 3010267  
GEV Code: 520136



LF Code: 3010300  
GEV Code: 530238

## RESIN 25 L

25 L package

## SALT FOR WATER SOFTNER IN TABLETS 25 kg

FOR WATER SOFTENING SYSTEMS

# DISHWASHING EXTRAORDINARY MAINTENANCE



LF Code: 7123303  
GEV Code: 512546

## AIR TRAP 175x65 mm

hose end fitting  $\varnothing$  6 mm



LF Code: 3060035  
GEV Code: 511446

## AIR CHAMBER 200x260 mm

closed window



LF Code: 3060034  
GEV Code: 511445

## AIR CHAMBER FOR BOILER 60x230 mm

hose end fitting  $\varnothing$  6 mm



LF Code: 3060068  
GEV Code: 517171

## AIR CHAMBER 55x31x90 mm

hose end fitting  $\varnothing$  6 mm



LF Code: 3060601  
GEV Code: 510103

## AIR CHAMBER COMPLETE 85x20x80 mm

with two O-ring gaskets, bajo bolt and  
hose end fitting  $\varnothing$  5 mm



LF Code: 3060609  
GEV Code: 518200

## AIR CHAMBER COMPLETE $\varnothing$ 34x79 mm

complete with flat O-ring gasket and  
connector - hose end fitting  $\varnothing$  6 mm



LF Code: 3060129  
GEV Code: 502062

## AIR CHAMBER COMPLETE $\varnothing$ 26x105 mm

hose end fitting  $\varnothing$  6 mm  
complete with mounting kit



LF Code: 3320039  
GEV Code: 541045

## PRESSURE SWITCH 1 LEVEL

calibration 28/12 mbar  
250V 16(4)A



LF Code: 3320096  
GEV Code: 541142

## PRESSURE SWITCH 1 LEVEL

calibration 123/75 mbar  
250V 16(4)A



LF Code: 3320019  
GEV Code: 541003

## PRESSURE SWITCH 1 LEVEL

calibration 55/35 mbar - 250V 16A  
max operating temperature 85°C



LF Code: 3320029  
GEV Code: 541017

## PRESSURE SWITCH 1 LEVEL

calibration 40/20 mbar -250V 16A  
max operating temperature 85°C

SEE COMPLETE LISTING ON WEBSITE  
[WWW.GEV-ONLINE.COM](http://WWW.GEV-ONLINE.COM)  
[WWW.LFSPAREPARTS724.COM](http://WWW.LFSPAREPARTS724.COM)

# DISHWASHING EXTRAORDINARY MAINTENANCE



LF Code: 3355461  
GEV Code: 418823

## HEATING ELEMENT FINNED 1000W 220V

for drying area - immersed depth 430 mm  
wings 25x50 mm - fittings M14x1.5  
length of finned part 335 mm



LF Code: 3455410  
GEV Code: 420331

## HEATING ELEMENT 1400W 230V

immersed length 190 mm  
width 160 mm - flange 50x27 mm  
complete with gasket



LF Code: 5061400  
GEV Code: 417575

## HEATING ELEMENT 2100W 230V

immersed length 270 mm  
width 160 mm - flange 50x27 mm  
complete with gasket



LF Code: 3855010  
GEV Code: 420347

## HEATING ELEMENT CARTRIDGE 2500W 255V

immersed length 210 mm  
external  $\varnothing$  flange 49 mm  
heating element  $\varnothing$  20 mm - cables 300 mm  
complete with O-ring



LF Code: 3355119  
GEV Code: 415004

## HEATING ELEMENT 3000W 220/380V

for boiler and tank  
immersed length 295 mm  
fitting for fastening  $\varnothing$  1 1/2 (48 mm)  
complete with gasket  $\varnothing$  63 mm



LF Code: 3355292  
GEV Code: 415066

## HEATING ELEMENT 4500W 220/380V

immersed length 300 mm  
flange  $\varnothing$  external 63 mm - with probe  
receptacle  
complete with O-ring  $\varnothing$  58 mm



LF Code: 3755950  
GEV Code: 416058

## HEATING ELEMENT BOILER 6000W 400V

immersed length 260 mm  
external  $\varnothing$  flange 60 mm - with cables  
complete with O-ring  $\varnothing$  57 mm



LF Code: 3756008  
GEV Code: 416289

## HEATING ELEMENT 6000W 230V

immersed length 415 mm  
width 65 mm - flange 80x27 mm



LF Code: 5020241  
GEV Code: 418770

## HEATING ELEMENT 15000W 240V

immersed length 595 mm  
external  $\varnothing$  flange 72 mm  
complete with O-ring  $\varnothing$  67 mm



# DISHWASHING EXTRAORDINARY MAINTENANCE



LF Code: 3122310  
GEV Code: 500114



LF Code: 3122500  
GEV Code: 500298



LF Code: 3122185  
GEV Code: LF3122185

## ELECTRIC PUMP AP 5800/2013 1HP

inlet external  $\varnothing$  45 mm  
outlet external  $\varnothing$  40 mm  
1HP 230V 50Hz 4A - Rpm 2850  
capacitor 16  $\mu$ F - flow rate 340 L/min

## ELECTRIC PUMP AP 902SX 0.10HP

inlet external  $\varnothing$  28 mm  
outlet external  $\varnothing$  28 mm  
0.10HP 230V 50Hz 1.1A - Rpm 2600  
capacitor 6.3  $\mu$ F - flow rate 80 L/min

## ELECTRIC PUMP FIR 1204DX 2HP

inlet external  $\varnothing$  63 mm  
outlet external  $\varnothing$  54 mm  
1.5kW 220/415V 50Hz 5.9/3.4A - Rpm 2800  
flow rate 500 L/min



LF Code: 3122052  
GEV Code: 500037



LF Code: 5007992  
GEV Code: 500359



LF Code: 3122454  
GEV Code: 500538

## ELECTRIC PUMP FIR 2211DX 0.10HP

inlet external  $\varnothing$  28 mm  
outlet external  $\varnothing$  28 mm  
0.074kW 230V 50Hz 1.1A - 2700Rpm  
capacitor 5  $\mu$ F - flow rate 80 L/min

## ELECTRIC PUMP LGB PPL46DX 0.43HP

hose-end fitting inlet-outlet  $\varnothing$  12 mm  
0.32kW 230V 50Hz capacitor 8 $\mu$ F

## ELECTRIC PUMP LGB PS46RH 0.60HP

inlet  $\varnothing$  3/8"F - outlet  $\varnothing$  3/8"F  
0.45kW 230V 50Hz 2.5A - Rpm 2800  
capacitor 10 $\mu$ F - for pressure increase  
with 2 hose-end fittings  $\varnothing$  3/8"x 12mm



LF Code: 3122574  
GEV Code: 500280



LF Code: 3122871  
GEV Code: LF3122871



LF Code: 3122001  
GEV Code: 500039

## DRAIN PUMP 100W 230V 50Hz

WITH SEAL ON SHAFT TYPE 6x22x7 in NBR  
inlet external  $\varnothing$  24 mm  
outlet external  $\varnothing$  24 mm - Asincrona

## DRAIN PUMP 100W 230V 50Hz

with motor overload cutout

## ELECTRIC PUMP GRE 1001X

190W 230V 50Hz  
inlet external  $\varnothing$  24 mm  
outlet external  $\varnothing$  24 mm



LF Code: 3122406  
GEV Code: 500573

## DRAIN PUMP HANNING DPS25-032

30W 220/240V 50Hz  
supplied with 2 extra  
pump bodies and RAST5 adjuster  
inlet outer  $\varnothing$  23÷28 mm - outlet outer  $\varnothing$  23 mm

SEE COMPLETE LISTING ON WEBSITE  
[WWW.GEV-ONLINE.COM](http://WWW.GEV-ONLINE.COM)  
[WWW.LFSPAREPARTS724.COM](http://WWW.LFSPAREPARTS724.COM)

# DISHWASHING EXTRAORDINARY MAINTENANCE



LF Code: 3090016  
GEV Code: 361015

## HYDRAULIC DISPENSER TYPE 3000

for rinse aid - flow rate max 3.6 cc  
with inspectionable filter - silicone valves  
neoprene/nylon diaphragm



LF Code: 3090001  
GEV Code: 361002

## HYDRAULIC RINSE AID INJECTOR

for rinse aid



LF Code: 3090228  
GEV Code: 361545

## RINSE AID DISPENSER 2001P

max flowrate 6.6 cc



LF Code: 3090019  
GEV Code: 361009

## RINSE AID DISPENSER N6 E 05 G4G4

with EPDM diaphragm  
minimum pressure 0.5 bar  
inlet side 4 mm hose fitting  
outlet side 4 mm hose fitting



LF Code: 3090130  
GEV Code: 361370

## RINSE AID HYDRAULIC DISPENSER

setting from 0 to 3 cm<sup>3</sup>/cycle



LF Code: 3090236  
GEV Code: 361596

## DETERGENT DISPENSER 115/240V 50/60Hz



LF Code: 3090307  
GEV Code: 361442

## PERISTALTIC PUMP TWINDOSE 10

24/115/230V 50/60Hz  
size 190x155 mm  
compact injection system. It allows  
pump speed setting  
max. detergent flow rate 4 L/h 0.1 bar  
max rinse aid flow rate 1 L/h 3 bar  
complete with mounting kit



LF Code: 3067602  
GEV Code: 510032

## SALT CONTAINER ASSEMBLY 85x100 mm

new model



LF Code: 3067001  
GEV Code: 510929

## SALT CONTAINER COMPLETE

overall height 150 mm - external ø 122 mm

# DISHWASHING EXTRAORDINARY MAINTENANCE



LF Code: 3120004  
GEV Code: 370734

## SOLENOID VALVE ELBI TYPE 319 1 WAY 90°

220/240V 50/60Hz - max. temperatur. 90°C  
inlet 3/4" - outlet ø 10.5 mm



LF Code: 3120104  
GEV Code: LF3120104

## SOLENOID VALVE ELBI TYPE 319 1 WAY 90°

220/240V 50/60Hz - max. temperatur. 90°C  
inlet 3/4" - outlet ø 13.5 mm



LF Code: 3120005  
GEV Code: 373017

## SOLENOID VALVE ELBI TYPE 329 1 WAY 180°

220/240V 50/60Hz - max. temperatur. 90°C  
inlet 3/4" - outlet ø 10.5 mm



LF Code: 3120006  
GEV Code: 373019

## SOLENOID VALVE ELBI TYPE 339 2 WAY 90°

220/240V 50/60Hz - max. temperatur. 90°C  
inlet 3/4" - two outlets ø 10.5 mm



LF Code: 3120405  
GEV Code: 370017

## SOLENOID VALVE T&P 1 WAY 180°

230V 50/60Hz - max. temperatur. 90°C  
inlet 3/4" - outlet ø 10.5 mm



LF Code: 3120557  
GEV Code: 370329

## SOLENOID VALVE L182B01 1/2" FF 24V

EX L180 - for water - DN 13.5 mm - NC  
max temperature 100°C  
max differential pressure 16 bar  
coil 24V 50/60Hz



LF Code: 3120541  
GEV Code: 370320

## SOLENOID VALVE L140B5 ø 1/2" FF 24V

for water - normally closed  
max. temperature 100°C  
max. differential pressure 10 bar  
coil 24V 50/60Hz



LF Code: 7114673  
GEV Code: 519663

## DOOR GASKET 3SIDES 550x600x650 mm

profile 11x19 mm  
for hood-type dishwasher PT-M

# TOP COOKERS

CLEANING AND SANITIZING PRODUCTS

TOOLS AND CONSUMABLES

ACCESSORIES

EXTRAORDINARY MAINTENANCE



# TOP COOKERS CLEANING AND SANITIZING PRODUCTS



LF Code: 3092235  
GEV Code: LF3092235

## PULICERAM SANITIZER SMEG 500 ml

suitable for glass-ceramic cooking hob  
for operating instructions see the label  
on the package - complete with sprayer



LF Code: 5103265  
GEV Code: 802253

## DEGREASER GLANCIL "EASY&SAFE" 750 ml

for all surfaces of professional kitchens  
contains non-ionic surfactants, contains  
perfume, dissolves proteins, starch and oil  
eliminates grease from all surfaces and  
objects, Washable and alkali-resistant  
particularly suitable for floor cleaning  
and extractor hoods



LF Code: 3092347  
GEV Code: 802212

## DETERGENT RAPID GREASE 1 l

degreasing detergent for grids and plates  
hot use  
for use instructions, see attached docu-  
mentation



LF Code: 3092022  
GEV Code: 802119

## ALKALINE DEGREASER FORT HDSpray 750 ml

for the cleaning of FIXED parts  
This product contains 90% biodegradable  
anionic and nonionic surface-active agents.  
It is an alkaline product for the removal of  
stubborn deposits of baked-on greases  
and mineral, grease from hot plates, ovens,  
grills and hoods



LF Code: 3092069  
GEV Code: LF3092069

## STAINLESS STEEL CLEANER 500 ml

for cleaning of stainless steel, chrome,  
brass, enamelled metal surfaces,  
light alloys and non-ferrous metals  
can be used in food environments  
avoid direct contact with food



LF Code: 3092214  
GEV Code: LF3092214

## DETERGENT STAINLESS STEEL SPRAY 500 ml

to restore stainless steel surfaces  
protects and polishes surfaces



LF Code: 3092267  
GEV Code: 890023

## DETERGENT FOR STAINL. STEEL WÜRTH 400ml



LF Code: 3092290  
GEV Code: LF3092290

## DISINFECTANT DETERGENT SANITRE 1 L

amphoteric sanitizer for food surfaces  
for the cleaning and sanitizing of floors,  
worktops and food equipment  
Reg. N°19277 of the Italian Ministry of  
Health



LF Code: 3092226  
GEV Code: LF3092226

## LIQUID DISINFECTANT DETERGENT 5 L

100% biodegradable  
Recommended for floors, walls, working  
surfaces, evaporators, etc.  
Removes all organic residue (even if en-  
crusted)  
Ensures perfect surface hygienisation  
Non-aggressive for the user  
Prevents pipe clogging thanks to the con-  
tinuous enzymatic action  
Dosage: 1% in hot water

# TOP COOKERS CLEANING AND SANITIZING PRODUCTS



LF Code: 3092330  
GEV Code: LF3092330

---

## **DETERGENT DISINFECTANT 750 ml**

for cleaning, degreasing, polishing and sanitizing all equipment, tops and surfaces. It is specific to clean and sanitize hospitals, retirement homes, schools and gyms, besides industrial, food and catering sector



LF Code: 3394361  
GEV Code: 890206

---

## **CONTACTS CLEANER SPRAY KD/E/2S 200 ml**

specific product to degrease and clean all the electric contacts, suit. for UHF and VHF groups, electronic components, micro-mechanisms of high precision, it does not corrode nor leaves residues, it does not oxidise treated parts.

# TOP COOKERS TOOLS AND CONSUMABLES



LF Code: 3180102  
GEV Code: 890101

## SILICONE GREASE 150 g

to lubricate taps, valves, pumps  
to grease bearings and threadings  
hot and cold water resistant  
water-repellent



LF Code: 5056894  
GEV Code: 890060

## SILICONE SEALANT PACTAN 7055

310 ml - colour black  
to glue glass-ceramic  
heat resistant up to 150°C



LF Code: 5012699  
GEV Code: H890005

## OIL MAYOR WHITE 17 kg - 20 L



LF Code: 3092178  
GEV Code: LF3092178

## GREASE S6959 GEB 20 g

special grease for valves and gas taps



LF Code: 3092177  
GEV Code: LF3092177

## GREASE MOLYKOTE1102 50 g

for gas valves and taps  
max operating temperature +175°C



LF Code: 3180002  
GEV Code: 890102

## GREASE STABURAGS N32 50 g

high quality grease for high temperatures  
to lubricate gas taps



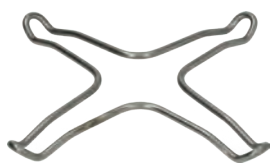
LF Code: 3180041  
GEV Code: LF3180041

## ROST OFF PLUS LUBRICATING SPRAY 300 ml

high penetration capacity throughout  
rust and corrosion, releases screws and  
nuts, eliminates rust and protects from  
corrosion, the addition of organic molyb-  
denum guarantees an excellent lubrication  
capacity of the surface, without any resins  
and acids, it does not damage rubber or  
plastic materials  
operating temperature -10+140°C  
flash point 200°C

SEE COMPLETE LISTING ON WEBSITE  
[WWW.GEV-ONLINE.COM](http://WWW.GEV-ONLINE.COM)  
[WWW.LFSPAREPARTS724.COM](http://WWW.LFSPAREPARTS724.COM)

## TOP COOKERS ACCESSORIES



LF Code: 3354001  
GEV Code: 210001

---

### REDUCER FOR MOKA POT 265x265 mm

---

in stainless steel  
matt version



LF Code: 3160342  
GEV Code: 692717

---

### DRAIN-FILTER STAINLESS STEEL 76x76 mm

---



LF Code: 3162013  
GEV Code: 693143

---

### MIDDLE FORK

---

square shaft hole 12x12 mm  
overall length 141 mm



# TOP COOKERS EXTRAORDINARY MAINTENANCE



LF Code: 3311098  
GEV Code: 490018



LF Code: 3311065  
GEV Code: 490074



LF Code: 3020033  
GEV Code: 107984

## ELECTRIC HOT PLATE ø 220 mm 2000W 230V

"ECODESIGN" MODEL  
electrical screw connections  
with STAINLESS steel edge  
for electric cooking top

## ELECTRIC HOT PLATE 4000W 400V

dimensions 300x300 mm  
terminal block electric connections  
with STAINLESS steel edge  
for electric cooking top

## ONE-FLAME PILOT BURNER SIT

multigas nozzle  
with bracket 2 positions  
external regulation through 7 mm nut



LF Code: 3025755  
GEV Code: 107002



LF Code: 3023161  
GEV Code: 104156



LF Code: 3348005  
GEV Code: 101089

## BURNER COMPLETE MOUNT. DIST. 120 mm

with central flame  
4000-7000 Kcal/h  
height 54 mm - ø 80 mm - pipe ø 27 mm

## BURNER 445x200 mm

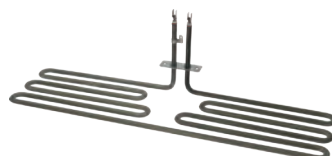
made of stainless steel

## GAS TAP 22S/O

with pilot flame, with horizontal flange  
fittings ø M20x1.5 mm, with flow regulator  
thermocouple connection M8x1  
D-shaped pin ø 10x8 mm



LF Code: 5028755  
GEV Code: 418279



LF Code: 3755602  
GEV Code: 418003



LF Code: 3351021  
GEV Code: 380139

## HEATING ELEMENT 1200W 230V

length 502 mm - width 50 mm  
height 58 mm

## HEATING ELEMENT 3000W 230V

length 125 mm - width 525 mm  
height 50 mm - flange 70x22 mm

## POWER RELAY FINDER 62.82.8.230.0000

230V 50/60Hz  
2 exchange contacts 16A



LF Code: 3454005  
GEV Code: 380108



LF Code: 3351016  
GEV Code: 400105

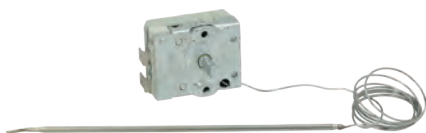
## CONTACTOR ABB AF16-30-10-13

17A 400V 7.5Kw - coil 100/250V 50/60Hz  
3 normally open contacts  
1 normally open auxiliary contact

## RELAY CRYDOM SOB667330

SEE COMPLETE LISTING ON WEBSITE  
[WWW.GEV-ONLINE.COM](http://WWW.GEV-ONLINE.COM)  
[WWW.LFSPAREPARTS724.COM](http://WWW.LFSPAREPARTS724.COM)

# TOP COOKERS EXTRAORDINARY MAINTENANCE



LF Code: 3444595  
GEV Code: 371320

## SINGLE-PHASE THERMOSTAT 40-280°C

D-shaped pin  $\varnothing$  6x4.6 mm  
capillary 850 mm - 16A 400V  
bulb  $\varnothing$  3x145 mm



LF Code: 3241396  
GEV Code: 111576

## SELF-ADHESIVE DISC PILOT SYMBOL

external  $\varnothing$  68 mm



LF Code: 3241637  
GEV Code: 110121

## BLACK KNOB $\varnothing$ 50 mm 60°-200°C

D-shaped hole 6x4.6 mm - flat part up  
for EGO thermostat



LF Code: 3356007  
GEV Code: 541673

## DRAIN TAP $\varnothing$ 1"1/2F TECNO

TAPERED SEAL - swivel nut  $\varnothing$  1"1/2F  
with gasket  
for BOILING PAN



LF Code: 3356177  
GEV Code: 542185

## TAP REPAIR KIT $\varnothing$ 2"F

for drain tap



LF Code: 3053008  
GEV Code: LF3053008

## RIGHT-LEFTHAND DOOR HINGE FOR OVEN

mounting distance 175 mm - overall length  
205  
height 156 mm



LF Code: 3053116  
GEV Code: 514226

## HINGE SPRING $\varnothing$ 32x195 mm

for PAN 700-900 PROTAGONISTA  
for BRATT PAN 700-900 PROTAGONISTA

CLEANING AND SANITIZING PRODUCTS

TOOLS AND CONSUMABLES

ACCESSORIES

EXTRAORDINARY MAINTENANCE



# FRYERS CLEANING AND SANITIZING PRODUCTS



LF Code: 3092212  
GEV Code: LF3092212

## DEGREASER FOR FRYER RENOFRIT 5 L

for industrial fryers  
to dissolve and remove all carbonized  
deposits, for immersion



LF Code: 3092347  
GEV Code: 802212

## DETERGENT RAPID GREASE 1 L

degreasing detergent for grids and plates  
hot use. for use instructions, see attached  
documentation



LF Code: 3092187  
GEV Code: LF3092187

## DEGREASING DETERGENT ND-150 EXTRA 5 L

food-safe  
for the removal of grease, oil, wax, ink,  
mould and every other residue that is hard  
to remove, to be diluted 1:5 up to 1:50  
not flammable, ideal for the cleaning of  
fryers after they have been emptied, for  
hood filters, for washing station etc.



LF Code: 3092186  
GEV Code: 890338

## DEGREASING DETERGENT ND-150 EXTRA 1 L

food-safe  
for the removal of grease, oil, wax, ink,  
mould and every other residue that is hard  
to remove, to be diluted 1:5 up to 1:50  
not flammable, ideal for the cleaning of  
fryers after they have been emptied, for  
hood filters, for washing station etc.



LF Code: 3092069  
GEV Code: LF3092069

## STAINLESS STEEL CLEANER 500 ml

for cleaning of stainless steel, chrome,  
brass, enamelled metal surfaces,  
light alloys and non-ferrous metals  
can be used in food environments  
avoid direct contact with food



LF Code: 3092214  
GEV Code: LF3092214

## DETERGENT STAINLESS STEEL SPRAY 500 ml

to restore stainless steel surfaces  
protects and polishes surfaces



LF Code: 3092267  
GEV Code: 890023

## DETERGENT FOR STAINL. STEEL WÜRTH 400ml



LF Code: 3092290  
GEV Code: LF3092290

## DISINFECTANT DETERGENT SANITRE 1 L

amphoteric sanitizer for food surfaces  
for the cleaning and sanitizing of floors,  
worktops and food equipment  
Reg. N°19277 of the Italian Ministry of  
Health



LF Code: 3092226  
GEV Code: LF3092226

## LIQUID DISINFECTANT DETERGENT 5 L

100% biodegradable  
Recommended for floors, walls, working  
surfaces, evaporators, etc.  
Removes all organic residue (even if  
encrusted)  
Ensures perfect surface hygienisation  
Non-aggressive for the user  
Prevents pipe clogging thanks to the con-  
tinuous enzymatic action  
Dosage: 1% in hot water

# FRYERS CLEANING AND SANITIZING PRODUCTS



LF Code: 3092330  
GEV Code: LF3092330

---

## DETERGENT DISINFECTANT 750 ml

---

for cleaning, degreasing, polishing and sanitizing all equipment, tops and surfaces. It is specific to clean and sanitize hospitals, retirement homes, schools and gyms, besides industrial, food and catering sector



LF Code: 3394361  
GEV Code: 890206

---

## CONTACTS CLEANER SPRAY KD/E/2S 200 ml

---

specific product to degrease and clean all the electric contacts, suit. for UHF and VHF groups, electronic components, micro-mechanisms of high precision, it does not corrode nor leaves residues, it does not oxidise treated parts.

SEE COMPLETE LISTING ON WEBSITE  
[WWW.GEV-ONLINE.COM](http://WWW.GEV-ONLINE.COM)  
[WWW.LFSPAREPARTS724.COM](http://WWW.LFSPAREPARTS724.COM)

# FRYERS TOOLS AND CONSUMABLES



LF Code: 3180102  
GEV Code: 890101

## SILICONE GREASE 150 g

to lubricate taps, valves, pumps  
to grease bearings and threadings  
hot and cold water resistant  
water-repellent



LF Code: 3180052  
GEV Code: 890015

## RED HIGH TEMPERATURE SEALER 280 ml

operating temperature  $-65+260^{\circ}\text{C}$  with  
peaks  $320^{\circ}\text{C}$   
for OVEN GASKETS



LF Code: 3092178  
GEV Code: LF3092178

## GREASE S6959 GEB 20 g

special grease for valves and gas taps



LF Code: 3092177  
GEV Code: LF3092177

## GREASE MOLYKOTE1102 50 g

for gas valves and taps  
max operating temperature  $+175^{\circ}\text{C}$



LF Code: 3180002  
GEV Code: 890102

## GREASE STABURAGS N32 50 g

high quality grease for high temperatures  
to lubricate gas taps



LF Code: 3180041  
GEV Code: LF3180041

## ROST OFF PLUS LUBRICATING SPRAY 300 ml

high penetration capacity throughout  
rust and corrosion, releases screws and  
nuts, eliminates rust and protects from  
corrosion, the addition of organic molyb-  
denum guarantees an excellent lubrication  
capacity of the surface,  
without any resins and acids  
it does not damage rubber or plastic  
materials  
operating temperature  $-10+140^{\circ}\text{C}$   
flash point  $200^{\circ}\text{C}$

## FRYERS ACCESSORIES



LF Code: 3055340  
GEV Code: 693017

### **FRYER BASKET 250x225x105 mm**

made of chrome-plated iron



LF Code: 3055177  
GEV Code: 970374

### **FRYER BASKET 270x235x105 mm**

made of chrome-plated iron  
for FRYER 12 l



LF Code: 3055359  
GEV Code: 970679

### **FRYER BASKET 300x220x115 mm**

made of chrome plated iron



LF Code: 3160370  
GEV Code: LF3160370

### **FINE MESH FILTER 300x100x170 mm**

SEE COMPLETE LISTING ON WEBSITE  
[WWW.GEV-ONLINE.COM](http://WWW.GEV-ONLINE.COM)  
[WWW.LFSPAREPARTS724.COM](http://WWW.LFSPAREPARTS724.COM)

# FRYERS EXTRAORDINARY MAINTENANCE



LF Code: 3023255  
GEV Code: 105163

## VERTICAL BURNER ø 75x180 mm

made of chrome-plated iron



LF Code: 3523023  
GEV Code: 101111

## VALVE 710 MINISIT FOR FRYER 50÷190°C

inlet ø 1/2"F - outlet ø 3/8"F  
thermocouple connection M9x1  
maximum gas inlet pressure 50 mbar  
ambient temperature 0÷60°C  
length capillary 1200 mm  
bulb ø 5x95 mm  
with an elbow flange ø 3/8"F



LF Code: 2111409  
GEV Code: 694349

## OIL DRAIN PIPE 1500 mm

with quick connections M-F



LF Code: 3755094  
GEV Code: 420177

## HEATING ELEMENT 2100W 230V

length 290 mm - width 50 mm  
height 205 mm - fittings M14x1.5 mm



LF Code: 3755858  
GEV Code: 416825

## HEATING ELEMENT 12000W 230/400V

length 325 mm - width 180 mm  
fitting M54x1.5 mm - complete with cables  
complete with O-rings  
with 2 holes for bulb



LF Code: 3240410  
GEV Code: 345032

## MICROSWITCH 16(4)A 250V



LF Code: 3351021  
GEV Code: 380139

## POWER RELAY FINDER 62.82.8.230.0000

230V 50/60Hz  
2 exchange contacts 16A



LF Code: 3454005  
GEV Code: 380108

## CONTACTOR ABB AF16-30-10-13

17A 400V 7.5Kw - coil 100/250V 50/60Hz  
3 normally open contacts  
1 normally open auxiliary contact



LF Code: 3351016  
GEV Code: 400105

## RELAY CRYDOM SOB667330



# FRYERS EXTRAORDINARY MAINTENANCE



LF Code: 3744223  
GEV Code: 375104

## THERMOSTAT THREE-PHASE 230°C

with manual reset  
covered capillary length 830 mm  
bulb  $\varnothing$  6x167mm - with stuffing gland  
fitting M10x1



LF Code: 5112409  
GEV Code: 550498

## BULB FASTENING CLIP

for heating element thermostat  
for pipe  $\varnothing$  8.5 mm - for bulb  $\varnothing$  4 mm



LF Code: 3523060  
GEV Code: 100820

## OIL SEAL FITTING $\varnothing$ 6.5 mm

internal thread M10x0.75 - external thread  
M14x1.5



LF Code: 3356149  
GEV Code: 542290

## DRAIN TAP $\varnothing$ 2" F TECNO

BRASS CAP - with swivel nut  $\varnothing$  2" F



LF Code: 5041924  
GEV Code: 532725

## O-RING 0177 VITON

ring thickness 3.53 mm - internal  $\varnothing$  74.60 mm

# PASTA COOKERS

CLEANING AND SANITIZING PRODUCTS

TOOLS AND CONSUMABLES

ACCESSORIES

EXTRAORDINARY MAINTENANCE



# PASTA COOKERS CLEANING AND SANITIZING PRODUCTS



LF Code: 40S2362  
GEV Code: LF40S2362

## SCALE REMOVER "C-30" 5 L

specific for dishwashers and professional ovens, for limescale elimination from boilers, circuits, plumbings and heat exchangers. for use instructions, see attached documentation



LF Code: 3092071  
GEV Code: LF3092071

## BIOLOGICAL DRAIN CLEANER 10 TABLETS

blister pack with 10 tablets  
it prevents and removes drain clogging



LF Code: 5103265  
GEV Code: 802253

## DEGREASER GLANCIL "EASY&SAFE" 750 ml

for all surfaces of professional kitchens contains non-ionic surfactants, contains perfume, dissolves proteins, starch and oil eliminates grease from all surfaces and objects, Washable and alkali-resistant particularly suitable for floor cleaning and extractor hoods



LF Code: 3092069  
GEV Code: LF3092069

## STAINLESS STEEL CLEANER 500 ml

for cleaning of stainless steel, chrome, brass, enamelled metal surfaces, light alloys and non-ferrous metals can be used in food environments avoid direct contact with food



LF Code: 3092267  
GEV Code: 890023

## DETERGENT FOR STAINL. STEEL WÜRTH 400ml



LF Code: 3092290  
GEV Code: LF3092290

## DISINFECTANT DETERGENT SANITRE 1 L

amphoteric sanitizer for food surfaces for the cleaning and sanitizing of floors, worktops and food equipment Reg. N°19277 of the Italian Ministry of Health



LF Code: 3092226  
GEV Code: LF3092226

## LIQUID DISINFECTANT DETERGENT 5 L

100% biodegradable  
Recommended for floors, walls, working surfaces, evaporators, etc.  
Removes all organic residue (even if encrusted)  
Ensures perfect surface hygienisation  
Non-aggressive for the user  
Prevents pipe clogging thanks to the continuous enzymatic action  
Dosage: 1% in hot water



LF Code: 3092330  
GEV Code: LF3092330

## DETERGENT DISINFECTANT 750 ml

for cleaning, degreasing, polishing and sanitizing all equipment, tops and surfaces. It is specific to clean and sanitize hospitals, retirement homes, schools and gyms, besides industrial, food and catering sector



LF Code: 3394361  
GEV Code: 890206

## CONTACTS CLEANER SPRAY KD/E/2S 200 ml

specific product to degrease and clean all the electric contacts, suit. for UHF and VHF groups, electronic components, micro-mechanisms of high precision, it does not corrode nor leaves residues, it does not oxidise treated parts.

SEE COMPLETE LISTING ON WEBSITE  
[WWW.GEV-ONLINE.COM](http://WWW.GEV-ONLINE.COM)  
[WWW.LFSPAREPARTS724.COM](http://WWW.LFSPAREPARTS724.COM)

# PASTA COOKERS TOOLS AND CONSUMABLES



LF Code: 3180102  
GEV Code: 890101

## SILICONE GREASE 150 g

to lubricate taps, valves, pumps  
to grease bearings and threadings  
hot and cold water resistant  
water-repellent



LF Code: 3092158  
GEV Code: 890202

## SILICONE MASTIC TRANSLUCENT GEB 310 ml

temperature range from - 50° to + 230°C  
to glue glass with glass or glass and metal



LF Code: 3092178  
GEV Code: LF3092178

## GREASE S6959 GEB 20 g

special grease for valves and gas taps



LF Code: 3092177  
GEV Code: LF3092177

## GREASE MOLYKOTE1102 50 g

for gas valves and taps  
max operating temperature +175°C



LF Code: 3180002  
GEV Code: 890102

## GREASE STABURAGS N32 50 g

high quality grease for high temperatures  
to lubricate gas taps



LF Code: 3180041  
GEV Code: LF3180041

## ROST OFF PLUS LUBRICATING SPRAY 300 ml

high penetration capacity throughout  
rust and corrosion, releases screws and  
nuts, eliminates rust and protects from  
corrosion, the addition of organic molyb-  
denum guarantees an excellent lubrication  
capacity of the surface, without any resins  
and acids, it does not damage rubber or  
plastic materials  
operating temperature -10+140°C  
flash point 200°C

## PASTA COOKERS ACCESSORIES



LF Code: 3055283  
GEV Code: 970714

---

### **BASKET FOR PASTA COOKER ø 145x200 mm**

of STAINLESS steel



LF Code: 3055337  
GEV Code: 970385

---

### **PASTA COOKER BASKET 140x140x205 mm LEFT**

made of STAINLESS STEEL



LF Code: 3160265  
GEV Code: 694000

---

### **STAINLESS STEEL DRAIN FILTER ø 50 mm**

SEE COMPLETE LISTING ON WEBSITE  
[WWW.GEV-ONLINE.COM](http://WWW.GEV-ONLINE.COM)  
[WWW.LFSPAREPARTS724.COM](http://WWW.LFSPAREPARTS724.COM)

# PASTA COOKERS EXTRAORDINARY MAINTENANCE



LF Code: 3020498  
GEV Code: 102975

## PILOT BURNER RH 2 FLAMES

with sparking plug  
with plug fitting  
with thermocouple fitting



LF Code: 3020009  
GEV Code: 100049

## PILOT BURNER PRINTED SIT 2 FLAMES

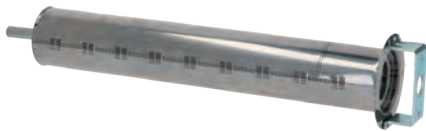
without sparking plug, gas nozzle and  
gasket



LF Code: 3023141  
GEV Code: 105344

## VERTICAL BURNER 305x55 mm

made of chrome-plated iron



LF Code: 3023266  
GEV Code: 105498

## BURNER ø 50x310 mm

overall length 370 mm  
made of STAINLESS steel



LF Code: 3181502  
GEV Code: 101009

## SPARK GENERATOR 2 OUTLETS

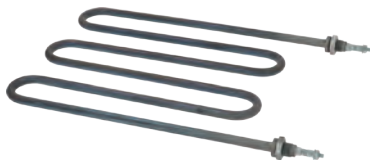
1.5Vdc battery powered



LF Code: 3397126  
GEV Code: 379331

## PROBE TEMPERATURE PT1000

2 wires - bulb ø 3x58 mm  
probe length 70 mm  
cable length 650 mm  
with fastening coupling M10x1 mm



LF Code: 3855009  
GEV Code: 416728

## HEATING ELEMENT 2200W 230V

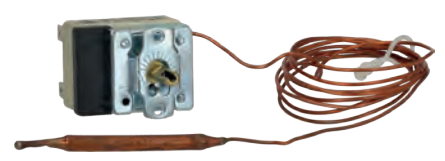
length 265 mm - width 200 mm  
fittings ø 1/4"



LF Code: 3355872  
GEV Code: 415971

## HEATING ELEMENT 9000W 230V

length 325 mm - width 250 mm  
coupling ø 40 mm  
complete with gaskets  
complete with cables - with bulb sheath



LF Code: 5048481  
GEV Code: 375094

## THERMOSTAT SINGLE-PHASE 30-110°C

D-shaped pin ø 6x4.6 mm  
capillary length 1500 mm  
bulb ø 6x80 mm



LF Code: 5009882  
GEV Code: 514120

## BALL VALVE ø 3/4"F

outlet ø internal 22 mm



LF Code: 3356051  
GEV Code: 541540

## DRAIN TAP ø 3/4"F



LF Code: 3186013  
GEV Code: 510408

## O-RING 06187 EPDM ø 58 mm

ring thickness 5.34 mm  
internal ø 47.00 mm

# PASTA COOKERS EXTRAORDINARY MAINTENANCE



LF Code: 3351021  
GEV Code: 380139

## POWER RELAY FINDER 62.82.8.230.0000

230V 50/60Hz  
2 exchange contacts 16A



LF Code: 3454005  
GEV Code: 380108

## CONTACTOR ABB AF16-30-10-13

17A 400V 7.5Kw - coil 100/250V 50/60Hz  
3 normally open contacts  
1 normally open auxiliary contact



LF Code: 3351016  
GEV Code: 400105

## RELAY CRYDOM SOB667330



LF Code: 3120558  
GEV Code: 370391

## SOLENOID VALVE L182B17 3/4"FF 24V

EX L180 - for water - NC  
max. temperature 100°C  
max. differential pressure 16 bar  
coil 24V 50/60Hz



LF Code: 7101532  
GEV Code: 374021

## SOLENOID VALVE RPE R 253 2-WAY 180°

230V 50/60Hz - max. temperature 60°C  
inlet 3/4"-two outlets ø 10.5 mm  
food-safe sealing (adjuster/reducer not included)



LF Code: 40L3189  
GEV Code: 512510

## ADHESIVE GASKET 9x5 mm

SOLD PER LINEAR METRE

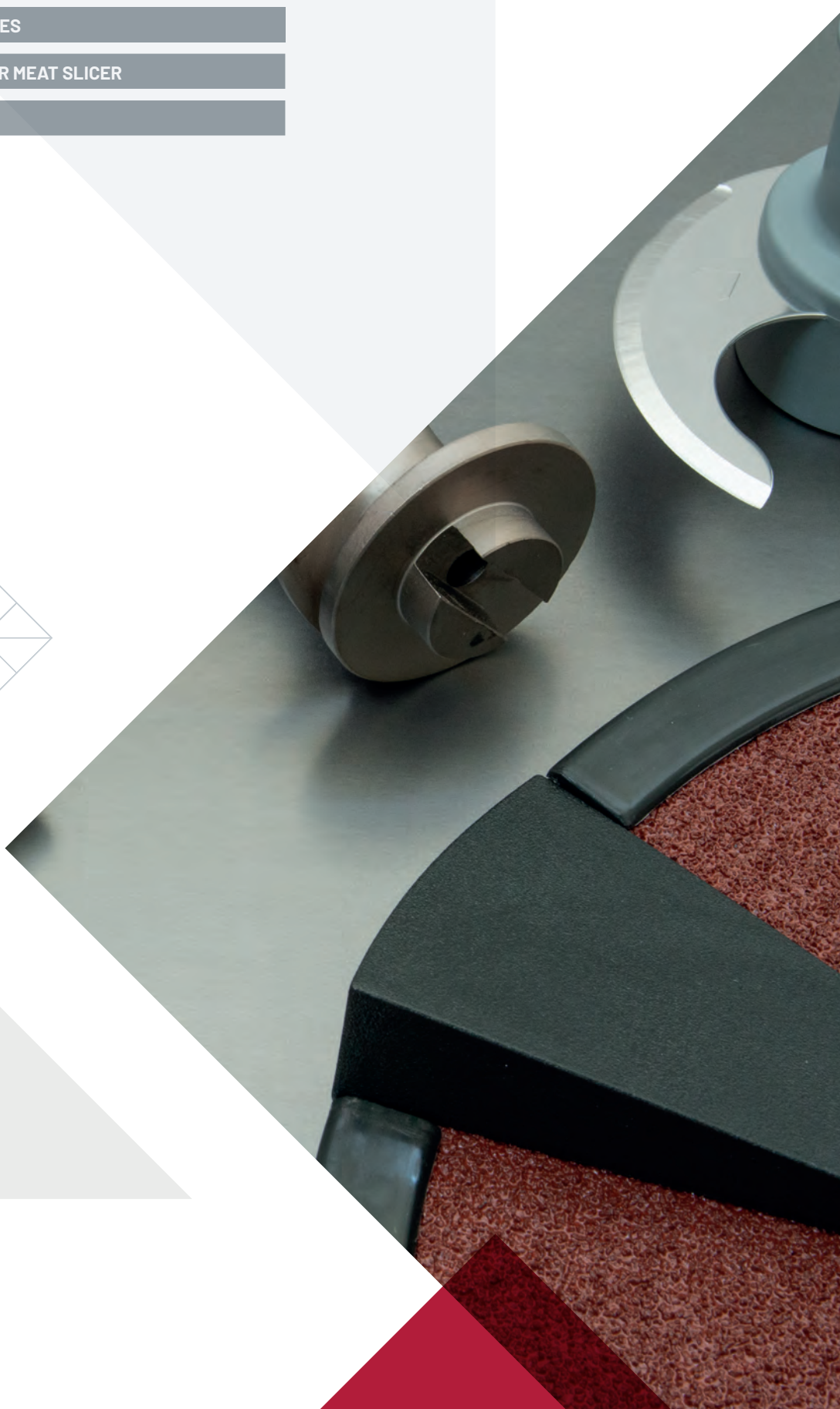


# FOOD PROCESSING

ACCESSORIES

BLADES FOR MEAT SLICER

SPARES





## FOOD PROCESSING ACCESSORIES



LF Code: 9494014  
GEV Code: LF9494014

### CHOPPING BOARD GREEN 500x300x20 mm

made of POLYETHYLENE - with retainers



LF Code: 9494004  
GEV Code: LF9494004

### CHOPPING BOARD WHITE 500x300x25 mm

made of POLYETHYLENE - with retainers



LF Code: 9494012  
GEV Code: LF9494012

### CHOPPING BOARD RED 500x300x20 mm

made of POLYETHYLENE - with retainers



LF Code: 9494011  
GEV Code: LF9494011

### CHOPPING BOARD BROWN 600x400x20 mm

made of POLYETHYLENE - with retainers



LF Code: 9494013  
GEV Code: LF9494013

### CHOPPING BOARD RED 600x400x20 mm

made of POLYETHYLENE - with retainers



LF Code: 9494009  
GEV Code: LF9494009

### CHOPPING BOARD YELLOW 600x400x20 mm

made of POLYETHYLENE - with retainers



LF Code: 9718152  
GEV Code: LF9718152

### PARING KNIFE BLADE 11 cm

green handle for vegetables and fruit  
HACCP compliant - NSF certified



LF Code: 9718142  
GEV Code: LF9718142

### BREAD KNIFE SERRATED BLADE 21 cm

white handle for bread and dairy products  
HACCP compliant - NSF certified



LF Code: 9718086  
GEV Code: LF9718086

### FRENCH CHEF'S KNIFE BLADE cm 18x3.7 mm

red handle for raw meat  
HACCP compliant- NSF certified



LF Code: 9718168  
GEV Code: LF9718168

### SLICING KNIFE BLADE cm 33x7.6 mm

professional black handle  
NSF certified



LF Code: 9718082  
GEV Code: LF9718082

### CARVING KNIFE BLADE 16 cm

red handle for raw meat  
HACCP compliant- NSF certified



LF Code: 9718115  
GEV Code: LF9718115

### FRENCH CHEF'S KNIFE BLADE cm 22x4.2 mm

yellow handle for cooked meat and poultry  
HACCP compliant - NSF certified

## FOOD PROCESSING ACCESSORIES



LF Code: 9178012  
GEV Code: LF9178012

### GLOVES FOOD PREP. FOODHAND SIZE L

work glove for the food industry  
good protection against dirty, fat  
and scratches  
CE n°1935/2004 - CE EN 420 approved



LF Code: 3394400  
GEV Code: 801450

### ACCUSHARP KNIFE SHARPENER

with customized screenprinting upon  
request, minimum quantity for screenprint-  
ing: 50 pieces



LF Code: 3394389  
GEV Code: LF3394389

### MULTIFUNCTION BLADE SHARPENER

sharpener for knives and scissors  
sharpening device for slicers  
with glass and tile cutter



LF Code: 9505017  
GEV Code: LF9505017

### KNIFE STERIL.UNIT ST.STEEL260x112xH330mm

NSF certified - HACCP compliant  
tank for liquid sanitiser  
removable pieces for easy cleaning



LF Code: 9014164  
GEV Code: LF9014164

### PLIERS ST.STEEL F/SLICED MEAT L. 12 cm



LF Code: 9009000  
GEV Code: LF9009000

### DRIP-FEED OILER 50 cl WITH OIL

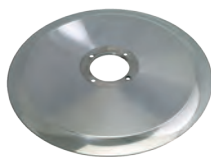


LF Code: 9394801  
GEV Code: 580147

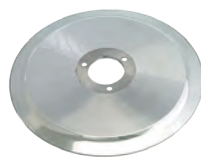
### MANUAL COUNTER TOP CAN OPENER

in cemented steel  
overall length knob included 805 mm  
height without knob 605 mm  
width 215 mm  
maximum can height 250 mm

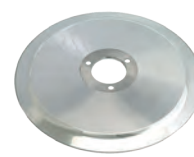
# FOOD PROCESSING BLADES FOR MEAT SLICERS



LF Code: 9006538  
GEV Code: LF9006538



LF Code: 9006525  
GEV Code: 698214



LF Code: 9006524  
GEV Code: 697385

## BLADE ø 350-57-4-280 MOD.C

B = outer ø 350 mm  
D = central hole ø 57 mm  
C = blade inner ø 280 mm  
4x fastening screws  
100CR6 forged steel

## BLADE ø 300-40-3-254 MOD.C

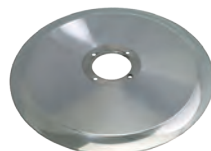
B = outer ø 300 mm  
D = central hole ø 40 mm  
C = blade inner ø 254 mm  
blade height 22.5 mm  
3x fastening screws  
100CR6 forged steel

## BLADE GRUND & BUNSE ø 300-40-3-250 MOD.C

B = outer ø 300 mm  
D = central hole ø 40 mm  
C = blade inner ø 250 mm  
blade height 20 mm  
3x fastening screws  
100CR6 forged steel



LF Code: 9006559  
GEV Code: 702173



LF Code: 9006535  
GEV Code: 697375

## BLADE 300-57-4-254 MOD.C W/EXTRACT.HOLES

B = outer ø 300 mm  
D = central hole ø 57 mm  
C = blade inner ø 254 mm  
4x fastening screws  
with extraction holes  
100CR6 forged steel

## ST. STEEL BLADE ø 330-57-4-270 MOD.C

B = external ø 330 mm  
D = central hole ø 57 mm  
C = blade internal ø 270 mm  
4 fastening screws  
100CR6 forged stainless steel

SEE COMPLETE LISTING ON WEBSITE  
[WWW.GEV-ONLINE.COM](http://WWW.GEV-ONLINE.COM)  
[WWW.LFSPAREPARTS724.COM](http://WWW.LFSPAREPARTS724.COM)

# FOOD PROCESSING SPARES



LF Code: 9013135  
GEV Code: 697392



LF Code: 9013220  
GEV Code: 697593



LF Code: 9013029  
GEV Code: 702174

## RIMMED GRINDERS 50-8-8

A = external  $\varnothing$  50 mm  
B = hole  $\varnothing$  8 mm  
H = height 8 mm  
FINE GRAIN

## EMERY WHEEL WITH STEP AND DRUM 50-8-8

A = external  $\varnothing$  50 mm  
B = hole  $\varnothing$  8 mm  
H = height 8 mm  
COARSE GRAIN

## CUP GRINDERS 51-8-12

A = external  $\varnothing$  51 mm  
B = hole  $\varnothing$  8 mm  
H = height 12 mm  
FINE GRAIN



LF Code: 9012015  
GEV Code: 697387



LF Code: 9014150  
GEV Code: 700725



LF Code: 9062020  
GEV Code: LF9062020

## SUCTION FOOT WITH SHAFT M5

length 10 mm  
base  $\varnothing$  37x26 mm

## CARRIAGE HANDLE DISTANCE BW HOLES 114 mm

thread  $\varnothing$  6 mm - length 132 mm

## BELT MULTIGRIP TB2 330 H12 5 GROOVES



LF Code: 9180103  
GEV Code: LF9180103



LF Code: 7150817  
GEV Code: 890256

## PTFE BAND HEIGHT 45 mm - 3 m

for VACUUM PACKAGING MACHINE

## VACUUM MAINTENANCE KIT

the kit includes:  
1 PTFE band 490x45 mm  
1 PTFE band 430x15 mm  
1 silicone gasket 2030 mm - section 10x7 mm  
1 silicone gasket 425 mm - section 17x8 mm  
1 soldering heating element 300x3.5 mm  
1 oil tube VM32 300 ml

# FOOD PROCESSING SPARES



LF Code: 9014600  
GEV Code: 696021



LF Code: 9014601  
GEV Code: 696022



LF Code: 9014602  
GEV Code: 696023

## STAINLESS STEEL KNIFE F/MEAT MINCER 8

model ENTERPRISE 8 self-sharpening  
external  $\varnothing$  55 mm - square hole 10x10 mm

## STAINLESS STEEL KNIFE F/MEAT MINCER 12

model ENTERPRISE 12 self-sharpening  
external  $\varnothing$  60 mm - square hole 12x12 mm

## STAINLESS STEEL KNIFE F/MEAT MINCER 22

model ENTERPRISE 22 self-sharpening  
external  $\varnothing$  73 mm - square hole 13x13 mm



LF Code: 9015501  
GEV Code: LF9015501



LF Code: 9750014  
GEV Code: 701756



LF Code: 9718048  
GEV Code: 697883

## SELF-SHARPENING STAINL. STEEL PLATE 8/2

model 8 ENTERPRISE self-sharpening  
ejection holes  $\varnothing$  2 mm  
external  $\varnothing$  61.8 mm - middle hole  $\varnothing$  9 mm

## SMOOTH BLADE ASSEMBLY WITH DRUM

boss  $\varnothing$  60 mm - overall height 92 mm

## KNIFE GROUP WITH PIN

overall height 62 mm



LF Code: 9014160  
GEV Code: 698279



LF Code: 9016014  
GEV Code: 699033



LF Code: 9063031  
GEV Code: LF9063031

## MEAT MINCER MASHER $\varnothing$ 50x100 mm

empty inside

## BAND SAW BLADE 1650xh16 mm DIAMOND BLADE

6.35 mm teething distance  
diamond points

## BEARING $\varnothing$ 20 mm BUSHING MOUNTED

external  $\varnothing$  20 mm - internal  $\varnothing$  5 mm -  
thickn.8 mm

## FOOD PROCESSING SPARES



LF Code: 9014076  
GEV Code: 401513

### RECTANG.PUSH-BUTT.PANEL 0-I WHITE-BLACK

with 6-threads cable  
external dimensions 75x40 mm



LF Code: 9014072  
GEV Code: 403002

### SMALL PUSH-BUTTON PANEL 0-I WITH BOARD

with cable  
external dimensions 120x47 mm



LF Code: 9014068  
GEV Code: 401357

### BUTTON PANEL 0-I BLACK-WHITE 16A 250V

GIOVENZANA - 1 normally closed contact  
1 normally open contact  
with indicator light  
mounting hole  $\varnothing$  22 mm



LF Code: 9014064  
GEV Code: LF9014064

### MUSHROOM PUSH-BUTTON RED 4A 400V

CEMA - 1 contact NC  
mounting hole  $\varnothing$  22 mm



LF Code: 9014019  
GEV Code: 301336

### MODIFICATION KIT 230V 0.75HP

maximum load 0.75Hp 12(2)A 230V  
power supply 230V 50/60Hz  
watertight box IP54 with cable grommets  
box dimensions 107x107x58 mm  
power cord with plug PE1663 IP44  
preset cable for in-line micro switch  
RED/GREEN touch-sensitive button w/  
indic.light  
in compliance with EC regulation  
for SLICER



LF Code: 9014020  
GEV Code: 401885

### VARIATION KIT 230/400V 0.75HP

maximum load 0.75Hp 12(2)A 400V  
power supply 230/400V 50/60Hz  
watertight box IP54 with cable grommets  
box dimensions 107x107x58 mm  
power cord with plug PE1664 IP44  
preset cable for in-line micro switch  
GREEN/RED touch-sensitive button w/  
indic.light  
in compliance with EC regulation  
for SLICER



LF Code: 9446007  
GEV Code: LF9446007

### TIMER KIT 30 MINUTES G30

complete with knob  
mechanical movement with balance wheel  
manually set mechanical timer  
30 minutes manually set cycle  
contact capacity 16(3)A 250V  
max temperature 125°C  
square pin  $\varnothing$  6x4.6 mm



LF Code: 9057004  
GEV Code: LF9057004

### SINGLE-PHASE SEL.SWITCH 0-1 POSITIONS

contact capacity 16A 600V - max 60/75°C  
shaft 7x8 mm  
input connection 1-3  
output connection 2-4



LF Code: 3240216  
GEV Code: 345504

### MAGNETIC MICROSWITCH E5221V

0.04A 250V - contact NO  
head 40x13x8 mm  
with cable length 1900 mm

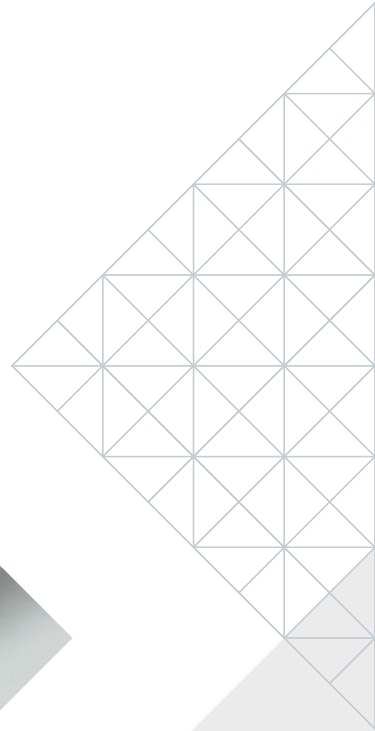
# SNACKING

CLEANING AND SANITIZING PRODUCTS

TOOLS AND CONSUMABLES

ACCESSORIES

EXTRAORDINARY MAINTENANCE





# SNACKING CLEANING AND SANITIZING PRODUCTS



LF Code: 40S2362  
GEV Code: LF40S2362

## SCALE REMOVER "C-30" 5 L

specific for dishwashers and professional ovens  
for limescale elimination from boilers, circuits, plumbers and heat exchangers. for use instructions, see attached documentation



LF Code: 5103265  
GEV Code: 802253

## DEGREASER GLANCIL "EASY&SAFE" 750 ml

for all surfaces of professional kitchens contains non-ionic surfactants, contains perfume, dissolves proteins, starch and oil eliminates grease from all surfaces and objects, Washable and alkali-resistant particularly suitable for floor cleaning and extractor hoods



LF Code: 3092069  
GEV Code: LF3092069

## STAINLESS STEEL CLEANER 500 ml

for cleaning of stainless steel, chrome, brass, enamelled metal surfaces, light alloys and non-ferrous metals can be used in food environments avoid direct contact with food



LF Code: 3092214  
GEV Code: LF3092214

## DETERGENT STAINLESS STEEL SPRAY 500 ml

to restore stainless steel surfaces protects and polishes surfaces



LF Code: 3092267  
GEV Code: 890023

## DETERGENT FOR STAINL. STEEL WÜTH 400ml



LF Code: 3092290  
GEV Code: LF3092290

## DISINFECTANT DETERGENT SANITRE 1 L

amphoteric sanitizer for food surfaces for the cleaning and sanitizing of floors, worktops and food equipment Reg. N°19277 of the Italian Ministry of Health



LF Code: 3092226  
GEV Code: LF3092226

## LIQUID DISINFECTANT DETERGENT 5 L

100% biodegradable  
Recommended for floors, walls, working surfaces, evaporators, etc.  
Removes all organic residue (even if encrusted)  
Ensures perfect surface hygienisation  
Non-aggressive for the user  
Prevents pipe clogging thanks to the continuous enzymatic action  
Dosage: 1% in hot water



LF Code: 3092330  
GEV Code: LF3092330

## DETERGENT DISINFECTANT 750 ml

for cleaning, degreasing, polishing and sanitizing all equipment, tops and surfaces. It is specific to clean and sanitize hospitals, retirement homes, schools and gyms, besides industrial, food and catering sector



LF Code: 3394361  
GEV Code: 890206

## CONTACTS CLEANER SPRAY KD/E/2S 200 ml

specific product to degrease and clean all the electric contacts, suit. for UHF and VHF groups, electronic components, micro-mechanisms of high precision, it does not corrode nor leaves residues, it does not oxidise treated parts.





LF Code: 3092362  
GEV Code: 890025

---

## FOAM CLEANER LOS 4000 500ML

---

for plastic/glass  
storage temperature max. 50 °C

# SNACKING TOOLS AND CONSUMABLES



LF Code: 3180102  
GEV Code: 890101

## SILICONE GREASE 150 g

to lubricate taps, valves, pumps  
to grease bearings and threadings  
hot and cold water resistant  
water-repellent



LF Code: 3180052  
GEV Code: 890015

## RED HIGH TEMPERATURE SEALER 280 ml

operating temperature  $-65+260^{\circ}\text{C}$  with  
peaks  $320^{\circ}\text{C}$   
for OVEN GASKETS



LF Code: 3092178  
GEV Code: LF3092178

## GREASE S6959 GEB 20 g

special grease for valves and gas taps



LF Code: 3092177  
GEV Code: LF3092177

## GREASE MOLYKOTE1102 50 g

for gas valves and taps  
max operating temperature  $+175^{\circ}\text{C}$



LF Code: 3180002  
GEV Code: 890102

## GREASE STABURAGS N32 50 g

high quality grease for high temperatures  
to lubricate gas taps



LF Code: 3180111  
GEV Code: 890295

## FOOD-GRADE GREASE NUTROL WHITE 700 g

temperature range  $-20/+200^{\circ}\text{C}$   
NSF H1 - grade 1.5



LF Code: 3180041  
GEV Code: LF3180041

## ROST OFF PLUS LUBRICATING SPRAY 300 ml

high penetration capacity throughout  
rust and corrosion, releases screws and  
nuts, eliminates rust and protects from  
corrosion, the addition of organic molyb-  
denum guarantees an excellent lubrication  
capacity of the surface, without any resins  
and acids, it does not damage rubber or  
plastic materials  
operating temperature  $-10+140^{\circ}\text{C}$   
flash point  $200^{\circ}\text{C}$



LF Code: 7102256  
GEV Code: 693002

---

**GLASS CONTAINER FOR HOT DOGS**  
**ø 200x240 mm**

---

# SNACKING EXTRAORDINARY MAINTENANCE



LF Code: 3351021  
GEV Code: 380139

---

## POWER RELAY FINDER 62.82.8.230.0000

230V 50/60Hz  
2 exchange contacts 16A



LF Code: 3454005  
GEV Code: 380108

---

## CONTACTOR ABB AF16-30-10-13

17A 400V 7.5Kw - coil 100/250V 50/60Hz  
3 normally open contacts  
1 normally open auxiliary contact



LF Code: 3351016  
GEV Code: 400105

---

## RELAY CRYDOM SOB667330



LF Code: 3755629  
GEV Code: 416701

---

## HEATING ELEMENT 1800W 240V

length 180 mm - width 195 mm  
with cables





**GEV Großküchen-Ersatzteil-Vertrieb GmbH**

Gadastr. 4  
85232 Bergkirchen - Germany  
Tel.: +49 8142 6522-50  
[order@gev-online.com](mailto:order@gev-online.com)  
[www.gev-online.com](http://www.gev-online.com)

**LF SpA a socio unico**

Via Voltri 80  
47522 Cesena FC - Italy  
Tel.: +39 0547 34 11 11  
[info@lfspareparts.com](mailto:info@lfspareparts.com)  
[www.lfspareparts724.com](http://www.lfspareparts724.com)

