

360 665

Cod. 71503485/0 ISTR.SOSTITUZIONE TIMER F40...85-BI236-N21S

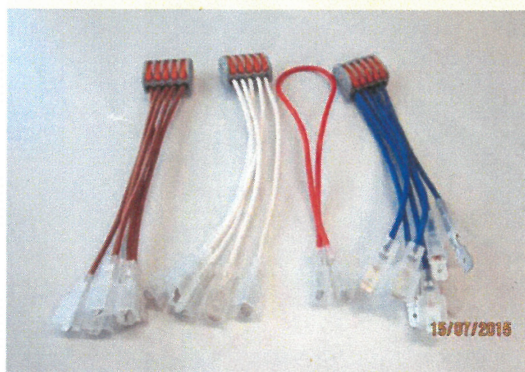
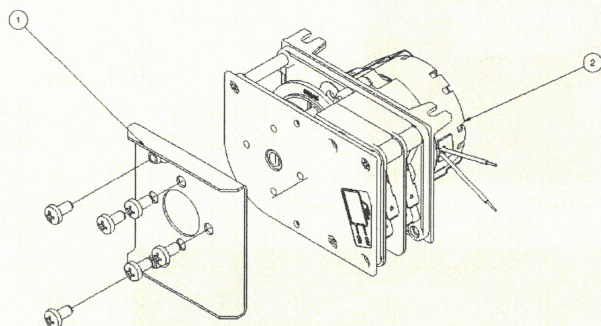
rev.00

KIT RETROFIT cod. CM81414561/0 - CM81414562/0

Composizione Kit

1. Staffetta
2. Timer elettromeccanico
3. cablaggio sostituzione timer

ELEM	CODICE	REV	Descrto 24/05	DESCRIZIONE	QTA
1	814145600	0		ASS STAFFA SOST.TIMER AZ	1
2	198000110	0		TIMER 4902F1 8M 230V/50 2 CAMME REG 6MINUTI	1
3	127264050			VITE TCR M4x8 AZ DIN 7985	6
6	814145700			ASS CABLAGGIO KIT TIMER	1



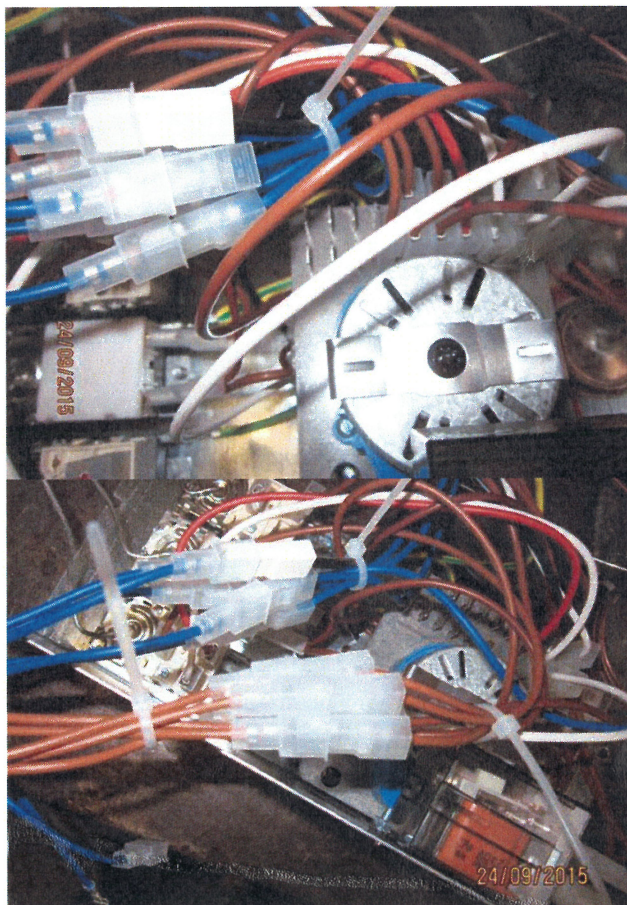
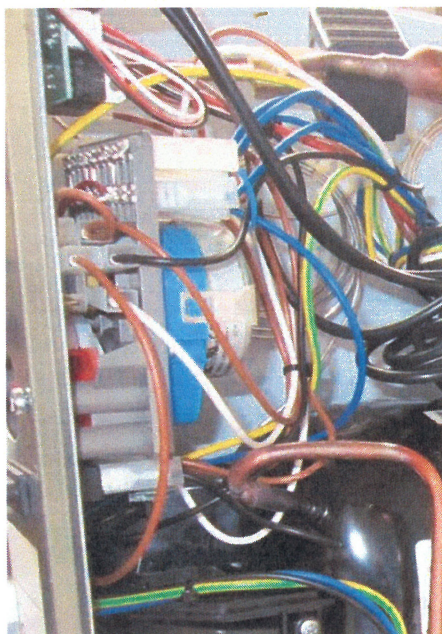
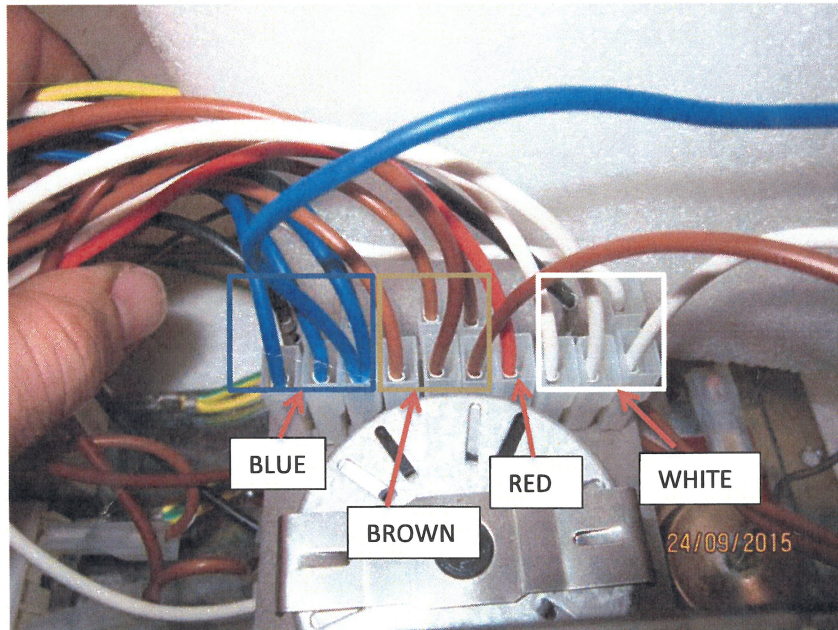
Istruzione

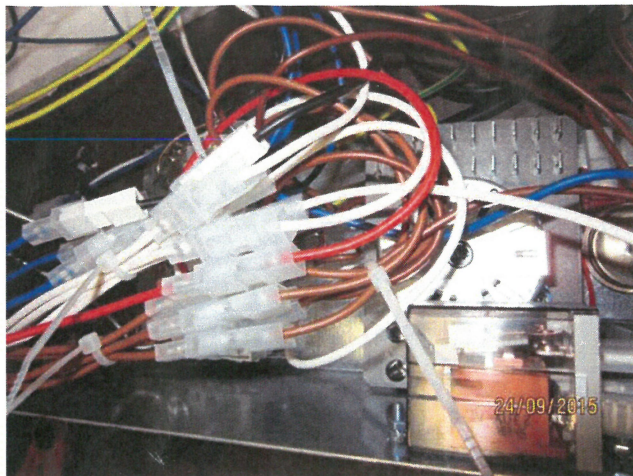
Smontare il timer AZ Fiber e montare il nuovo timer tramite il fissaggio della staffetta di supporto.
Scollegare i fili dal vecchio timer

instruction

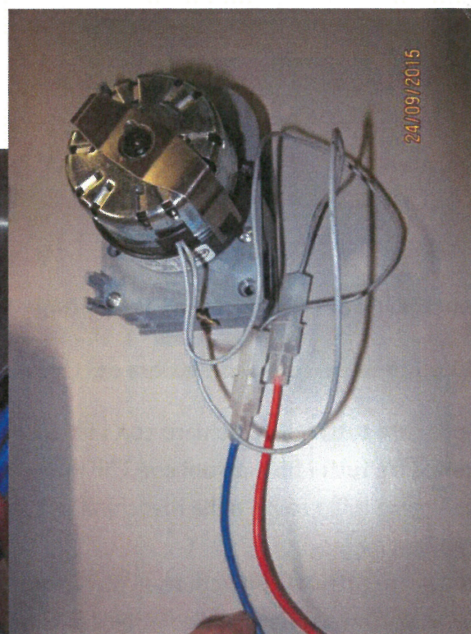
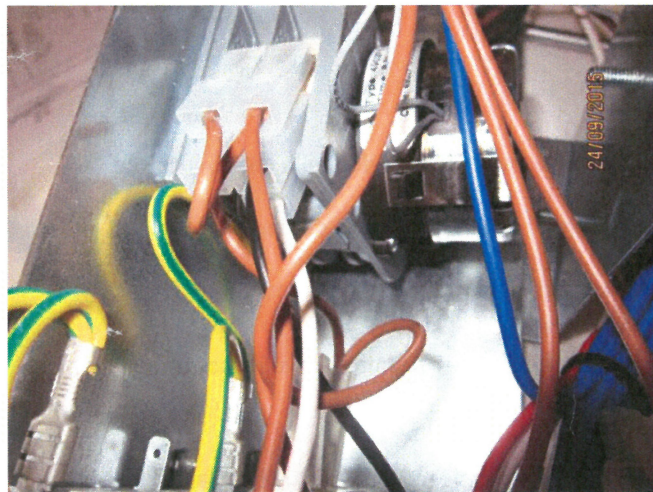
Remove the timer AZ Fiber and fit the new timer with the mounting of the relay support.
Disconnect the wires from the old timer

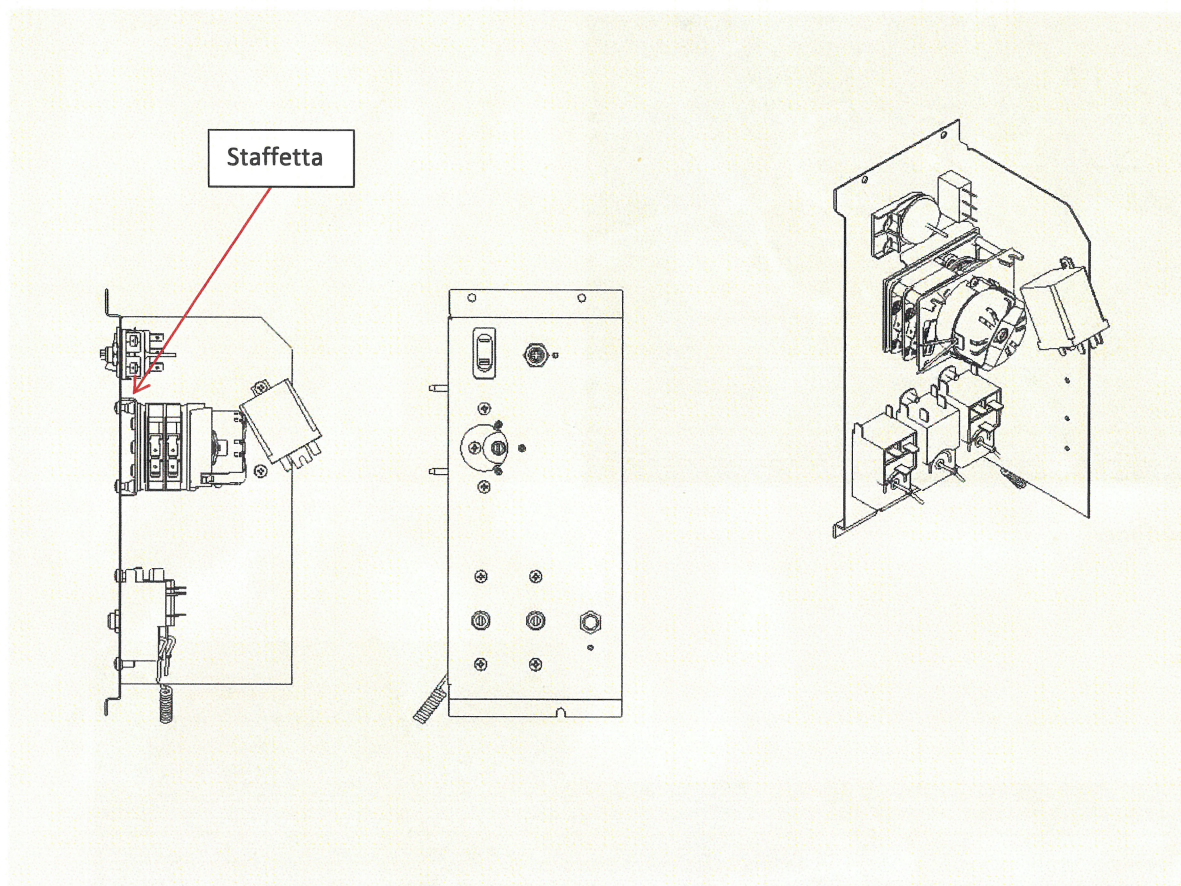
Old timer





New Timer





La posizione dei fili dei due micro nel nuovo timer hanno la stessa posizione di quello che sostituisce.

Collegare i fili presenti sulla morsettiera del timer AZ tramite il cablaggio dato in dotazione

1. collegare tutti i fili blu chiaro con i fili blu chiaro del kit cablaggio +un filo grigio del timer
2. collegare tutti i fili marroni con i fili marroni del kit cablaggio
3. collegare il filo rosso della macchina con un filo grigio del timer tramite il cavo rosso del kit cablaggio.
4. collegare tutti i fili bianchi con i fili bianchi del kit cablaggio
5. Se la bobina della valvola solenoide ha due fili neri vanno collegati uno con il blu chiaro e l'altro con il bianco del kit cablaggio.
6. I fili del kit cablaggio con i fastom maschi non utilizzati vanno rimossi dai morsetti estraibili o isolati.
7. Fascettare i cavi all'interno della macchina per rendere il cablaggio stabile ed evitare il rischio di contatti accidentali con parti in movimento.

Di seguito vengono allegati gli schemi elettrici

Connect the wires on the terminal board timer AZ by wiring as supplied

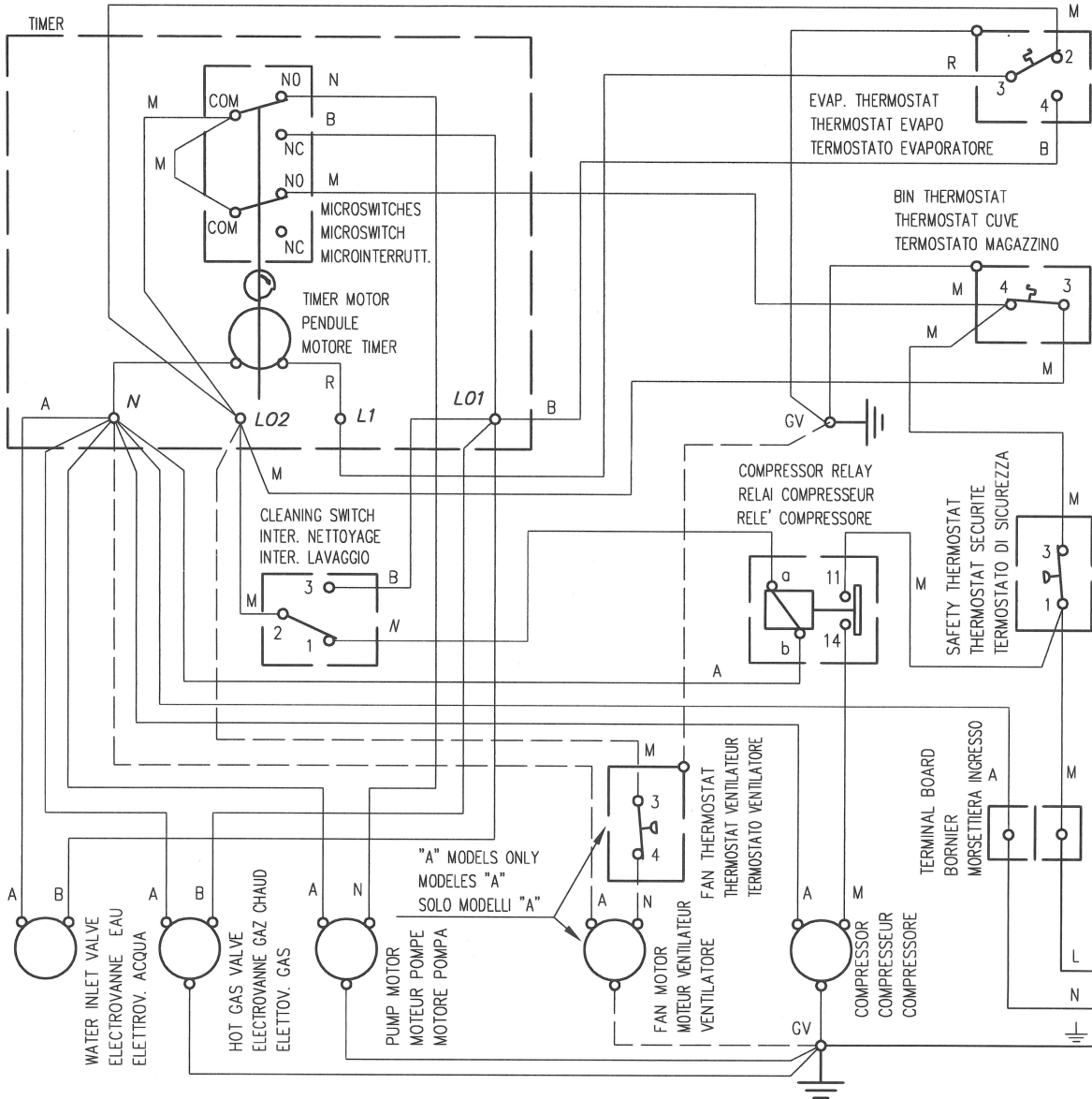
- 1. connect all the wires light blue with light blue wires wiring kit and a gray wire of the timer*
- 2. connect all the wires brown with brown strands of wiring kit*
- 3. connect the red wire of the machine with a gray wire of the timer through red cable of the wiring kit.*

4. *Connect all white wires with the white wires of the wiring kit*
5. *If the coil of the solenoid valve has two wires than you connect one with the light blue and the other with the white of the wiring kit.*
6. *The unused wires of kit must be removed from the plug-in terminals or isolated.*
7. *Clamp the cables inside the machine to make the wiring stable and avoid the risk of accidental contact with moving parts.*

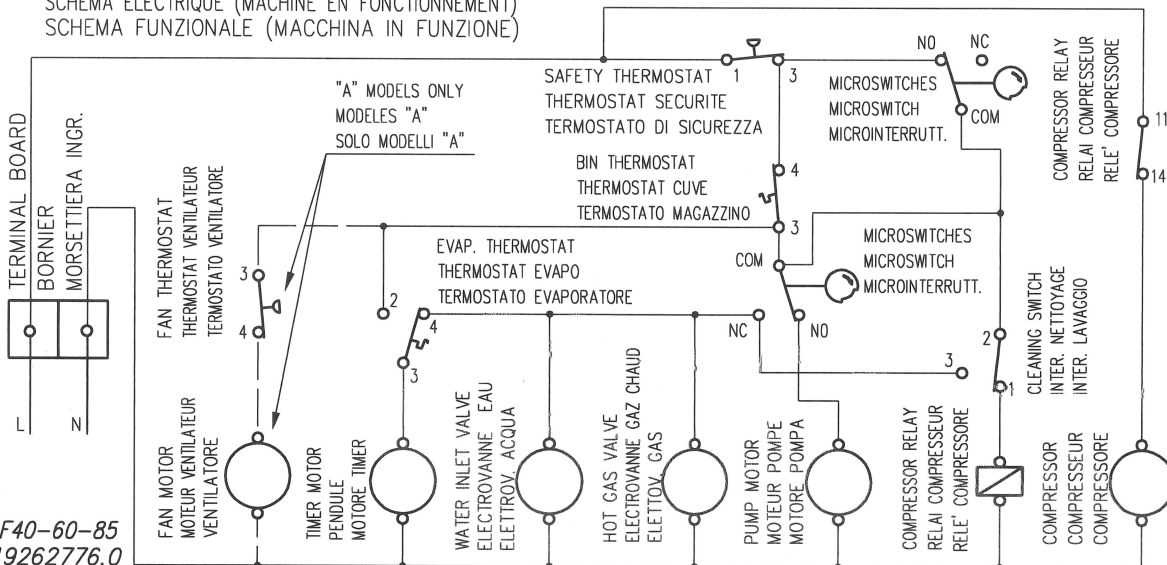
Below are attached wiring diagrams

WIRING DIAGRAM (MACHINE OPERATING)
 SCHEMA ELECTRIQUE (MACHINE EN FONCTIONNEMENT)
 SCHEMA ELETTRICO (MACCHINA IN FUNZIONE)

R = RED - ROUGE - ROSSO
 B = WHITE - BLANC - BIANCO
 N = BLACK - NOIR - NERO
 A = BLUE - BLEU - AZZURRO
 M = BROWN - MARRON - MARRONE
 GV = YELLOW GREEN - JAUNE VERT - GALLO VERDE



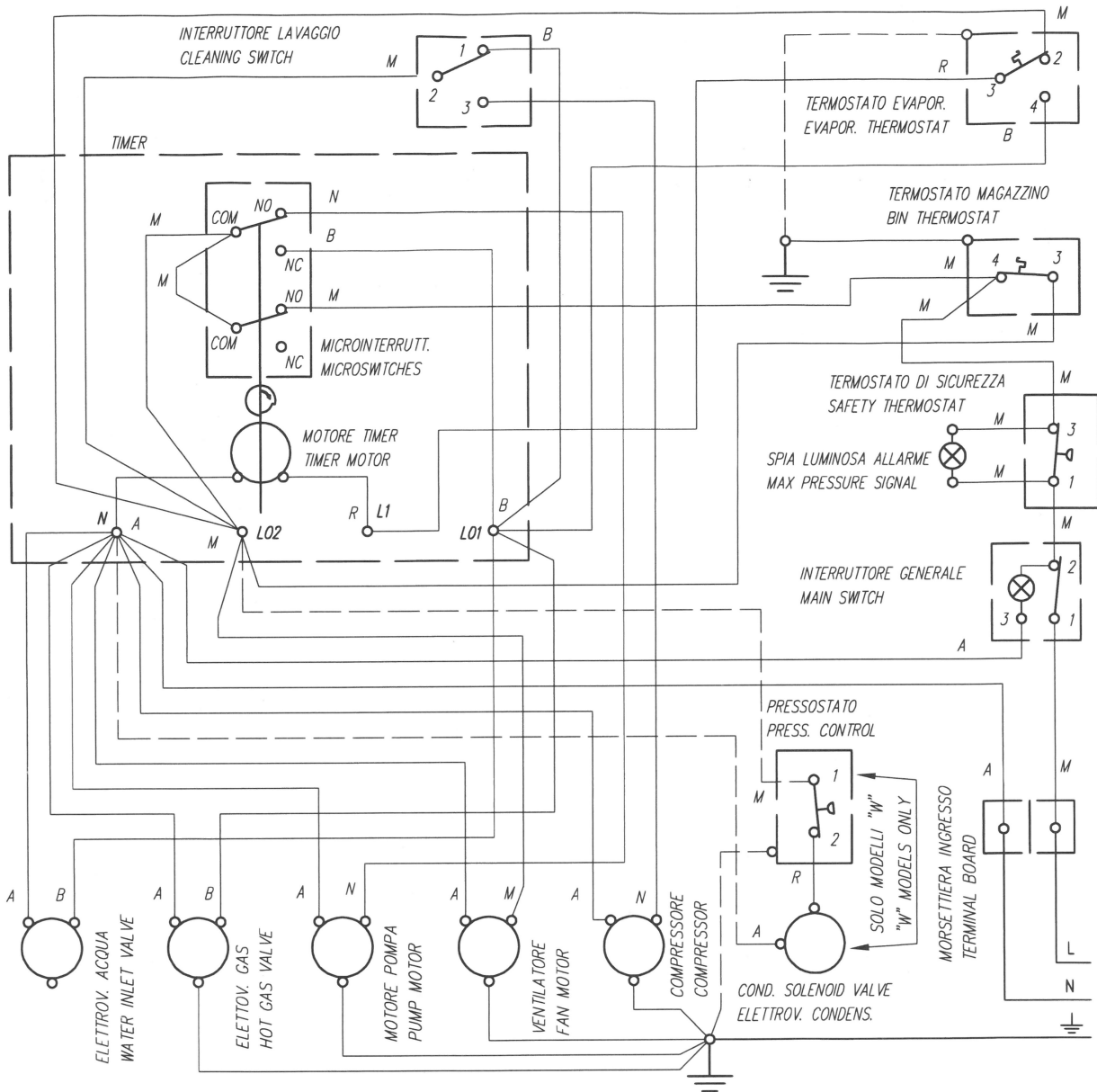
ELECTRIC DIAGRAM (MACHINE OPERATING)
 SCHEMA ELECTRIQUE (MACHINE EN FONCTIONNEMENT)
 SCHEMA FUNZIONALE (MACCHINA IN FUNZIONE)



F40-60-85
 19262776.0

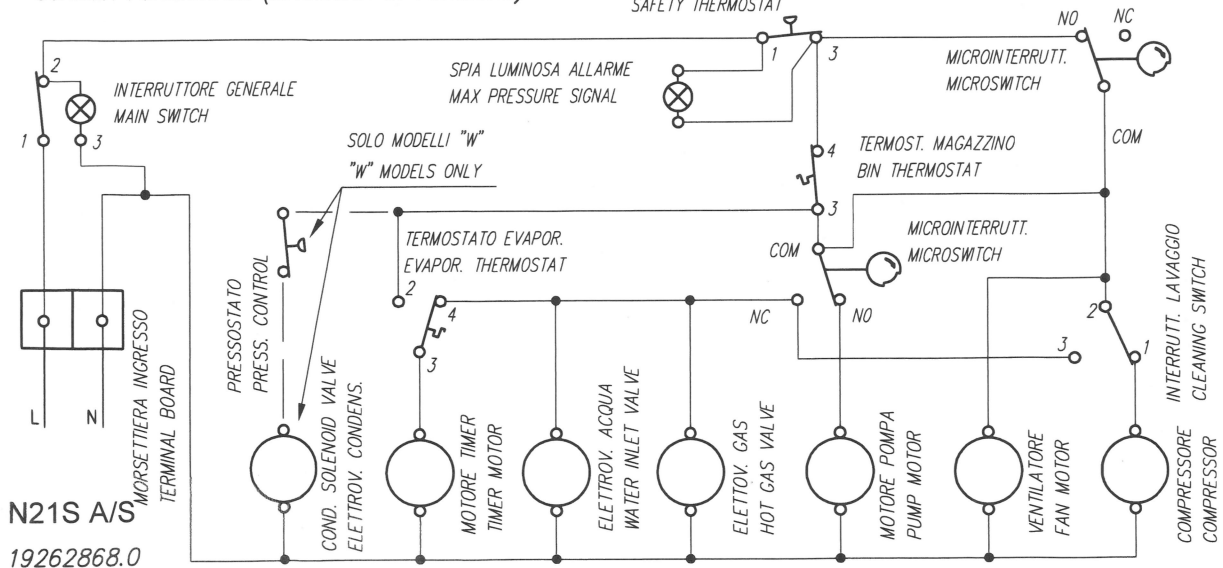
WIRING DIAGRAM (MACHINE OPERATING)
 SCHEMA ELETTRICO (MACCHINA IN FUNZIONE)

A = AZZURRO-BLUE B = BIANCO-WHITE
 M = MARRONE-BROWN N = NERO-BLACK
 R = ROSSO-RED



ELECTRIC DIAGRAM (MACHINE OPERATING)
 SCHEMA FUNZIONALE (MACCHINA IN FUNZIONE)

TERMOSTATO DI SICUREZZA
 SAFETY THERMOSTAT

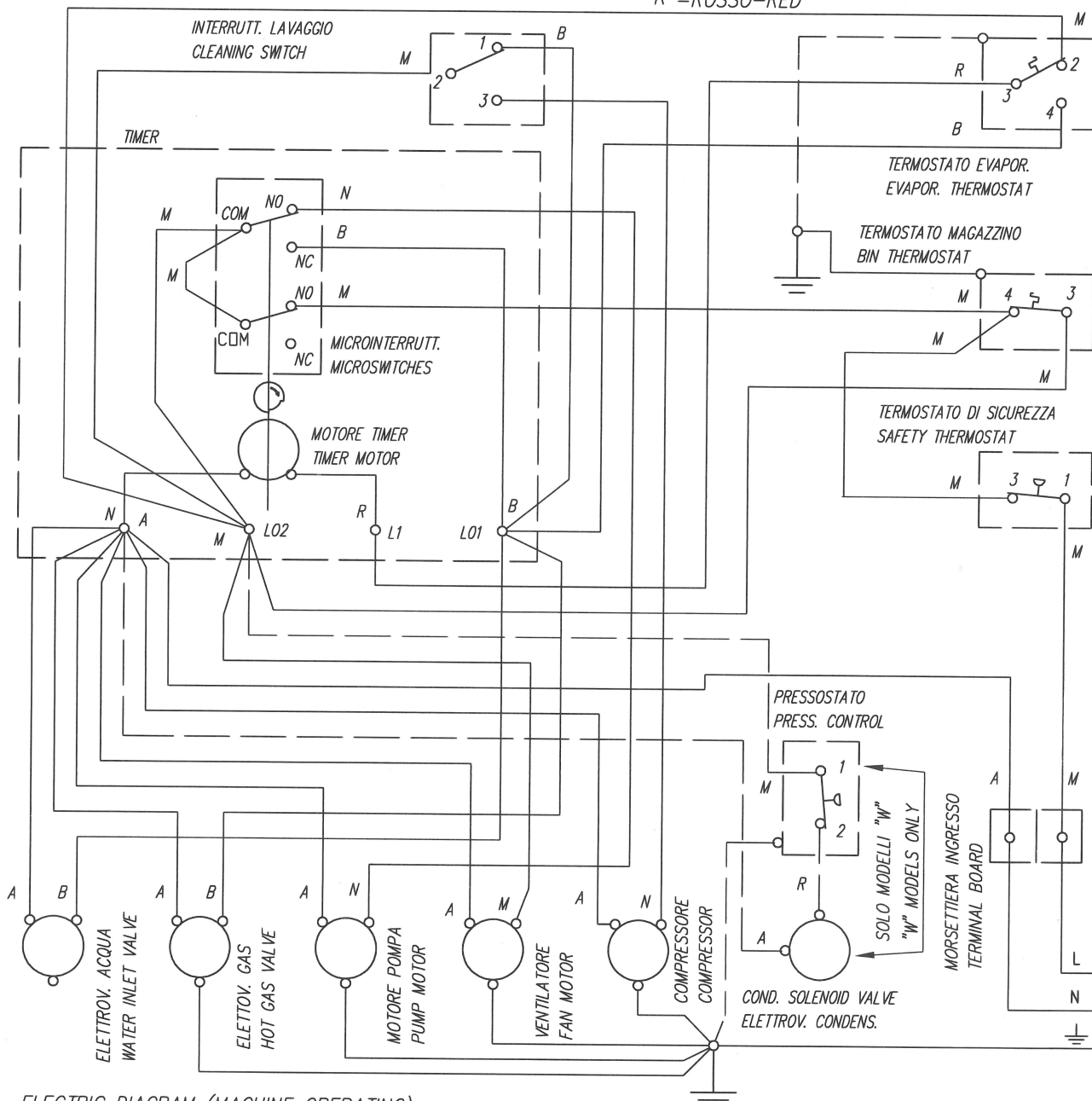


N21S A/S
 19262868.0

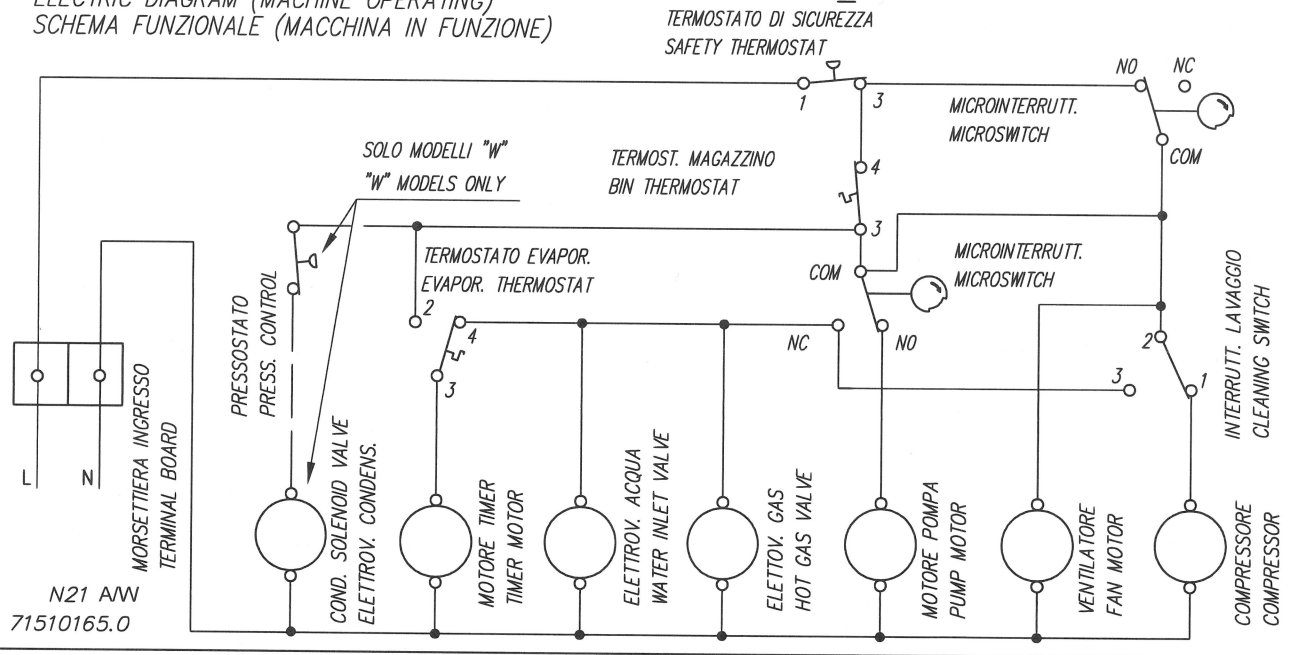
WIRING DIAGRAM (MACHINE OPERATING)
 SCHEMA ELETTRICO (MACCHINA IN FUNZIONE)

A = AZZURRO-BLUE
 M = MARRONE-BROWN
 R = ROSSO-RED

B = BIANCO-WHITE
 N = NERO-BLACK

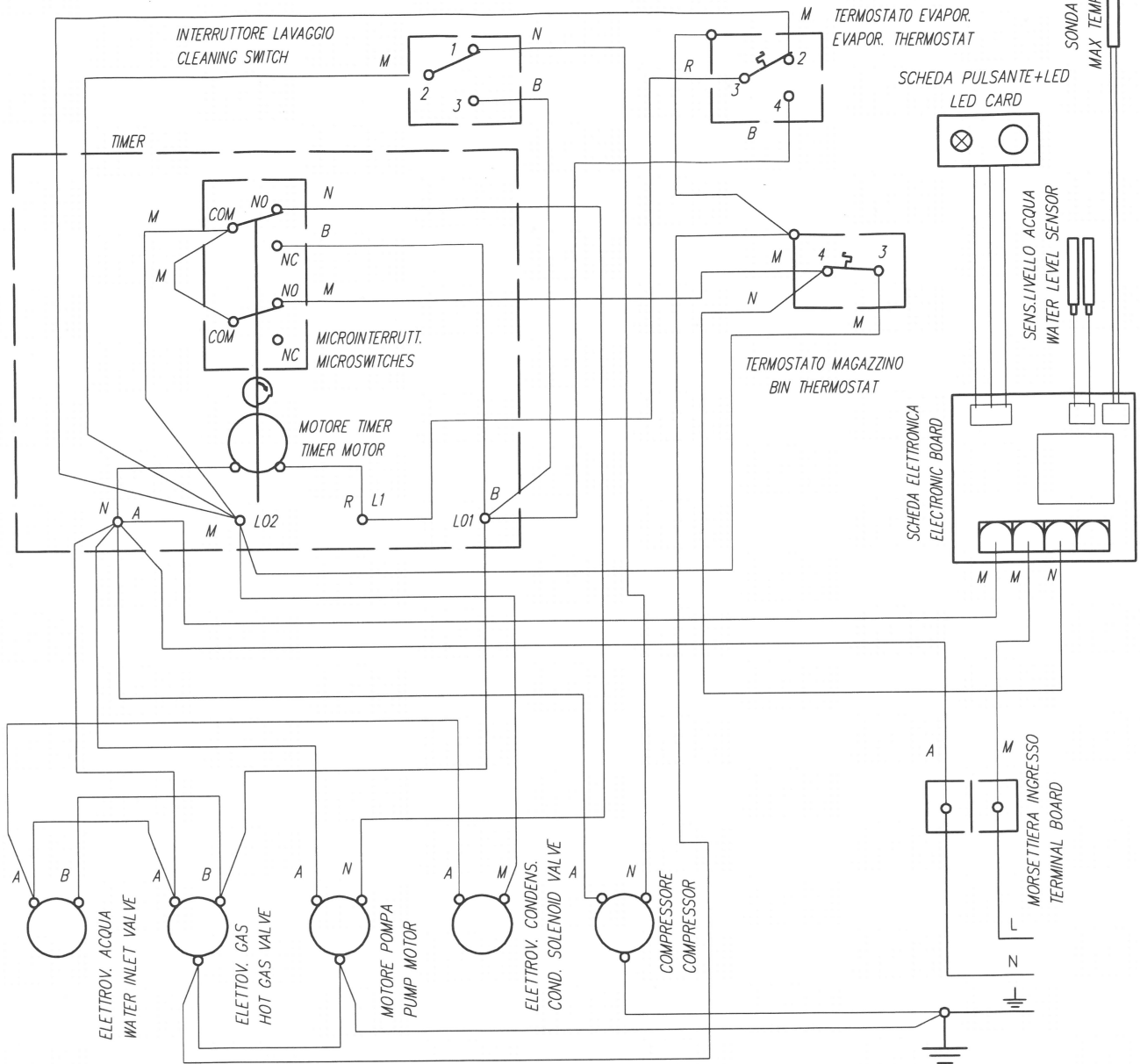


ELECTRIC DIAGRAM (MACHINE OPERATING)
 SCHEMA FUNZIONALE (MACCHINA IN FUNZIONE)



WIRING DIAGRAM (MACHINE OPERATING)
 SCHEMA ELETTRICO (MACCHINA IN FUNZIONE)

A = AZZURRO-BLUE
 M = MARRONE-BROWN
 R = ROSSO-RED
 B = BIANCO-WHITE
 N = NERO-BLACK



ELECTRIC DIAGRAM (MACHINE OPERATING)
 SCHEMA FUNZIONALE (MACCHINA IN FUNZIONE)

