

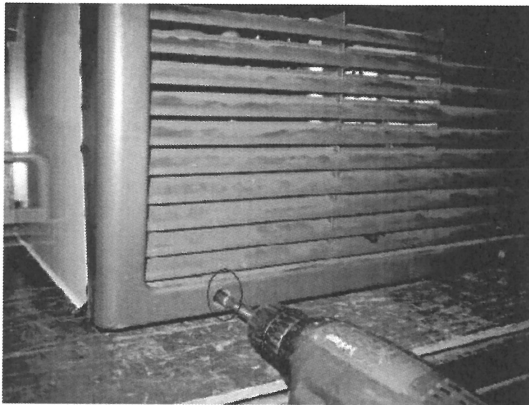
## Mechanical Timer Replacement Instruction

Version: Feb 12, 2011

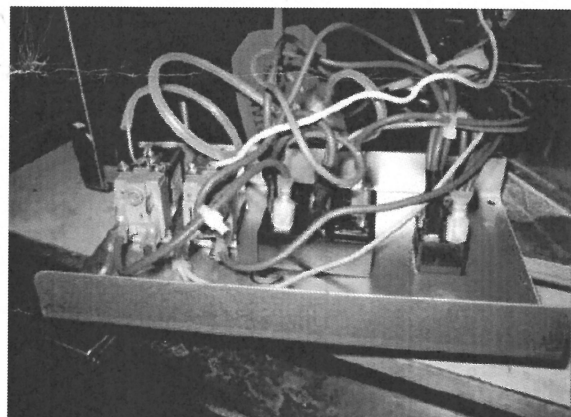


**Caution:** Please shut off power supply before replacing the timer

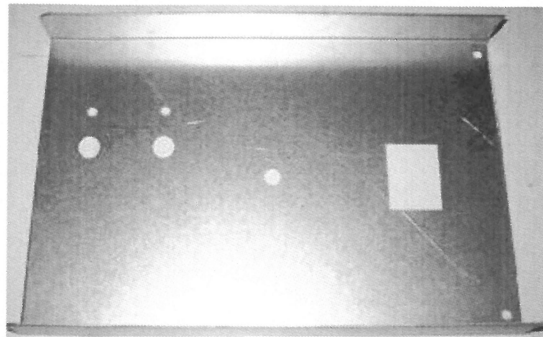
**Step 1:** Remove the two screws on front and take off the louvered front panel



**Step 2:** Remove the two screws on bracket

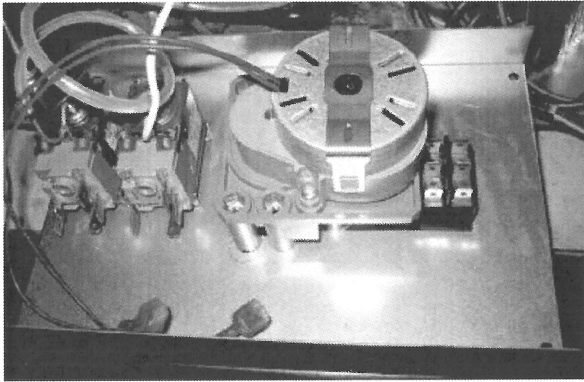


**Step 3:** Disconnect all the terminals from the thermostats, timer and main switch, then remove the thermostats, timer and switch from the bracket. (Send the old ABB timers back to Gavin please)



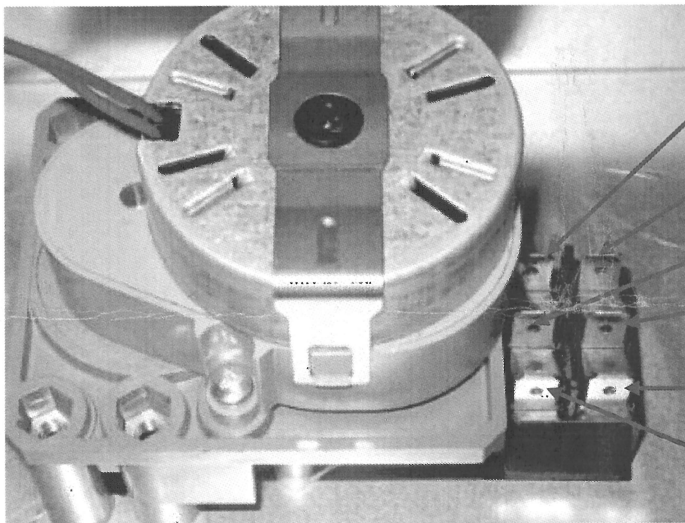
**Step 4:** Install the thermostats and main switch on the new bracket (mechanical timer has already

installed on the bracket by factory), please check the mechanical timer setting on 2.5min position



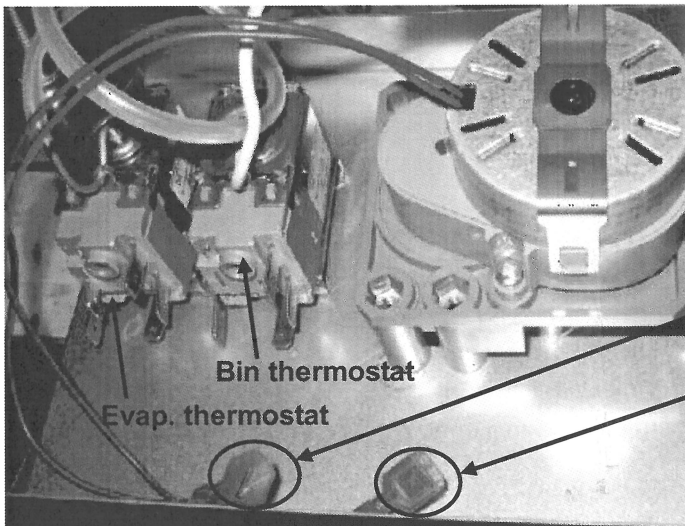
**Step 5: Wiring connect**

**a) Main switch wiring connect (no change)**



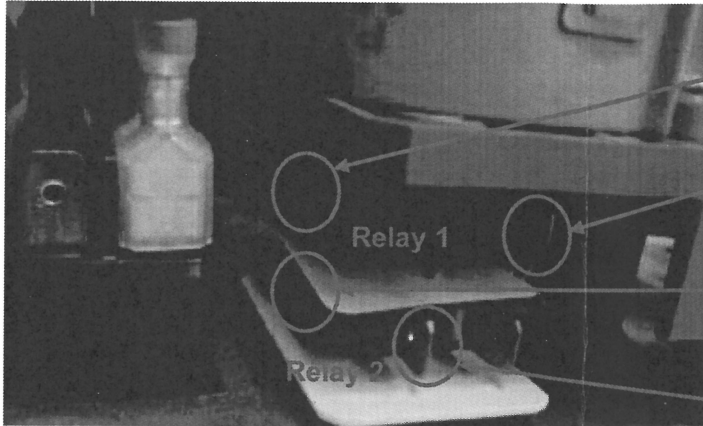
- #23 wiring connect #3 terminal
- #3/49 wiring connect #6 terminal
- #64/65 wiring connect #2 terminal
- #65 wiring connect #5 terminal
- #13 wiring connect #4 terminal
- #49 wiring connect #1 terminal

**b) Mechanical timer wiring connect**



**Timer motor connection:**

- Male terminal connect #9 wiring (blue)
- Female terminal connect "C" terminal of evaporator thermostat



**Timer relay connection:**

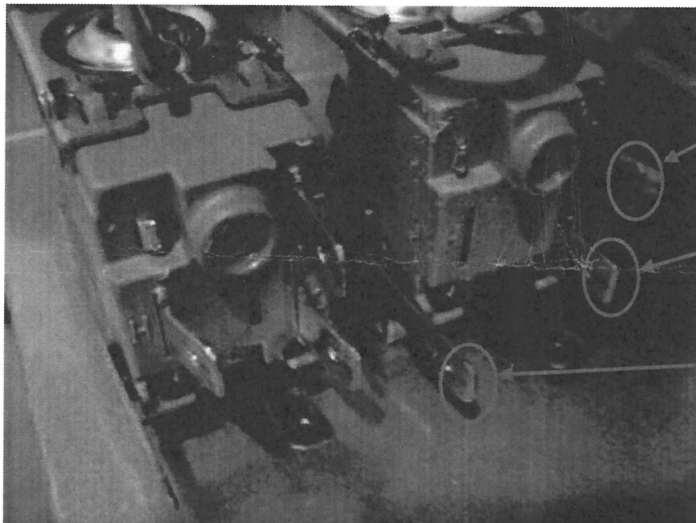
Connect #3/33 wiring

#92 wiring connect "NC 1"  
(New wiring: 040001386)

Connect #33/66 wiring

#94 wiring connect "NO 2"  
(New wiring: 040001386)

**c) Thermostat wiring connect (no change)**

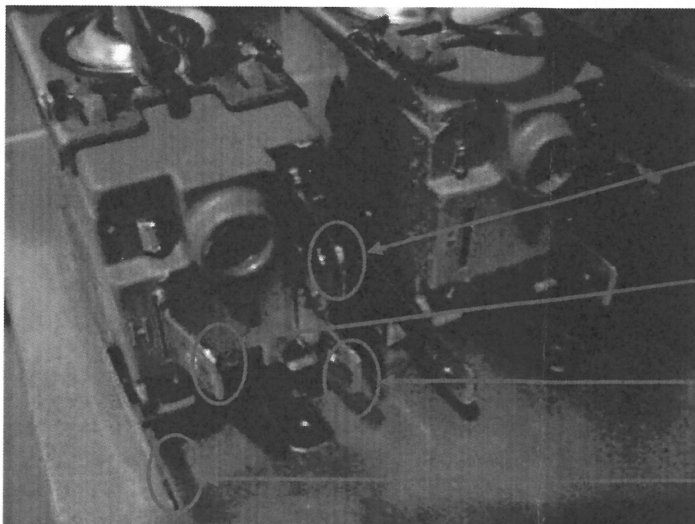


**Bin thermostat connection:**

#64 wiring connect "L" terminal

#15 wiring connect "C" terminal

Connect grounding wiring  
(yellow/green)



**Evaporator thermostat connection:**

#91 wiring connect "L" terminal  
(New wiring: 040001386)

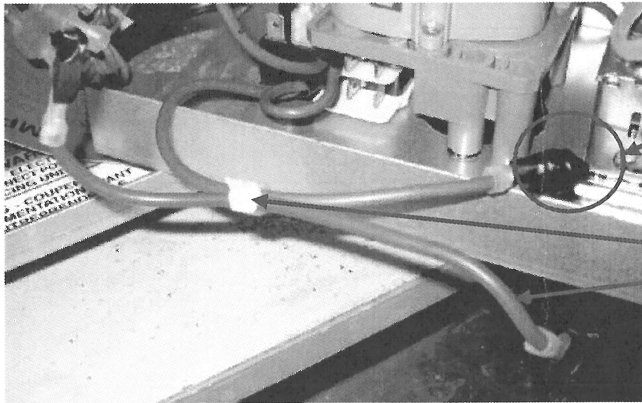
#93 wiring connect "H" terminal  
(New wiring: 040001386)

Timer motor (Female terminal)  
connect "C" terminal

Connect grounding wiring  
(yellow/green)

d) Other wiring connect

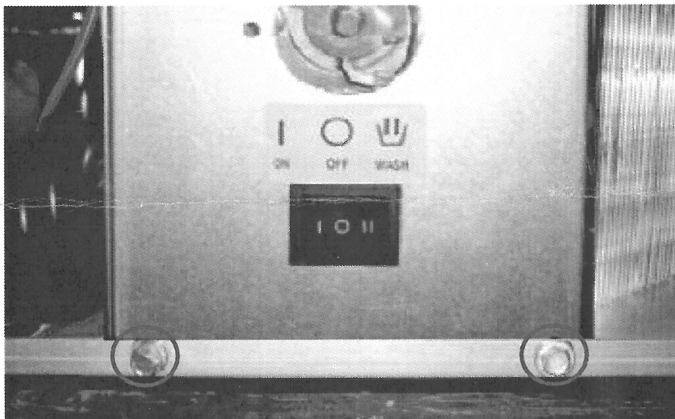
- #91/92 wiring connect #6/23 wiring
- #93/94 wiring connect #5/12 wiring
- Wrap the terminal of #66 wiring with electrical tape
- Cut off the tie strap and get rid of #67 wiring (red)



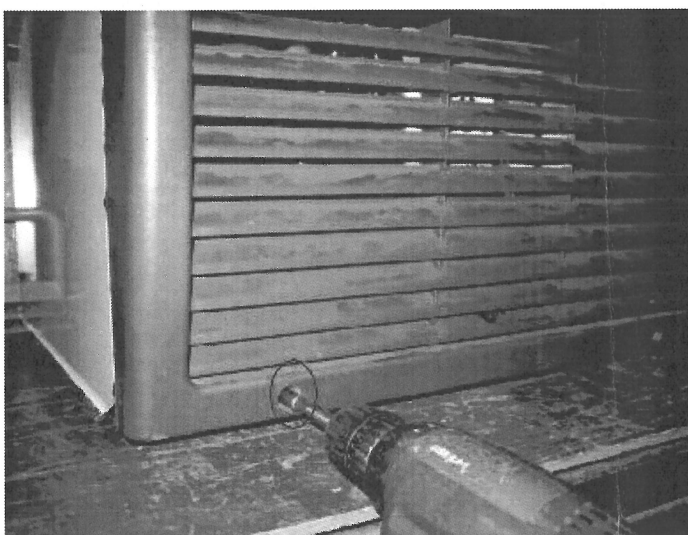
Wrap the terminal of #66 wiring with electrical tape

Cut off the tie strap and get rid of #67 wiring (red)

Step 6: Install the new bracket with two screws



Step 7: Install the louvered front panel with two screws



Step 7: Stick the new Wiring Diagram (P/N 040001442)

# Appendix1:Wiring Diagram

