

Identification: A14 - N900
Tech. Bulletin n°: PD2005-02
Date: 26-05-2005
Issuer: M. Scalon (TT&S)
Factory: PD-Vallenoncello Modular Cooking



Subject N900 PASTA COOKERS: NEW WATER SOLENOID VALVE

Model 200372, 200373, 200374, 200375, 200376, 200377, 200378, 200379, 200380, 200381, 200382, 200383, 200396, 200397, 200398, 200399, 200400, 210376, 210377, 210378, 210379, 210380, 210381, 210382, 210383, 220376, 220377, 220378, 220379, 220380, 220381, 220382, 220383, 224009

Problem The solenoid breaks in case of:
- lack of water in the main water supply net;
- hot water supplied to the pasta cooker.

Reason - The solenoid is designed for intermittent duty.

Actions in factory - New components from s/n 521...
- Updated the spare part lists.
- New components to install:
1. Water solenoid valve (new code: **0C2390**);
2. n°2 hose carriers (code: **0C1626**) for inner water connections;

Actions in field The new components are available as spare part.

The present modification can be retrofitted but it is not mandatory

For the spare part code of each component see also the Spare Parts Catalogue.

OLD WATER SOLENOID VALVE



NEW WATER SOLENOID VALVE

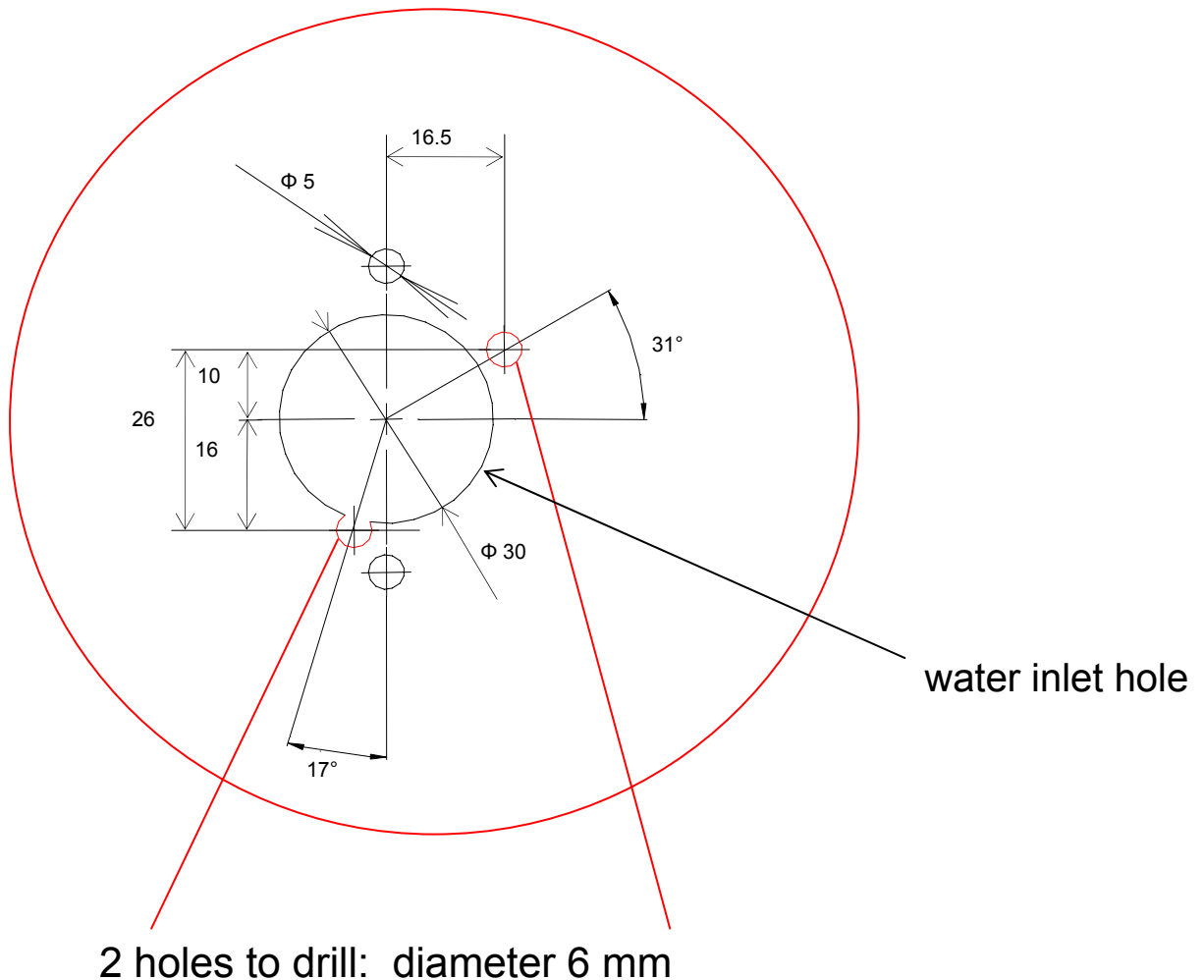


Solenoid 'class F'
Room temperature 80 °C

Body in brass

To replace the new water solenoid valve on equipments older than s/n 521... it is needed to run also the following modifications:

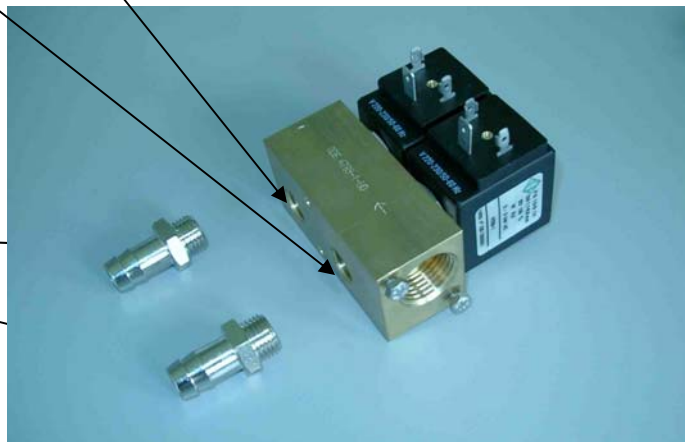
- ✓ **Bottom:** it is needed to drill 2 holes (diam. 6 mm) for fitting the valve round the main water inlet hole (see picture below);



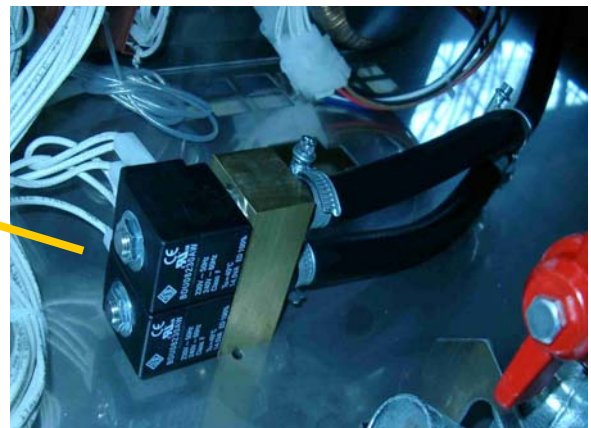
- ✓ **Inlet water connection:** new connection: 1/2 inch female thread; old connection: 3/4 inch male thread. *(It is needed a nipple connector to reconnect the equipment to the water pipe: not available as spare part).*
- ✓ **Outlet water connections:** it is needed to use 2 hose carriers to connect the valve to the hoses.

water outlets: 1/4 " female thread

hose
carriers



water inlet: 1/2 " female thread



Example of installation of the new valve

- ✓ **Electric connections:** electric connections don't change (see picture below).

