

Instruction Sheet

Subject: 8263417 Schneider Heat Contactor Kit Instructions

Models affected: Electric Fryers

Follow these instructions to replace an 8072284 standard heat mechanical contactor with a Schneider heat contactor PN 8076169.

1. Disconnect power from the fryer.
2. Gain access to the contactor box.
3. Remove the contactor cover.
4. Locate the heat contactor(s) to replace (see Figure 1).
5. Remove the nuts securing the old contactor (see Figure 2).
6. With the wires still attached, carefully set the old contactor on top of the contactor directly next to it (see Figure 3).
7. Using vice grips or a nut driver bend the **bottom stud** back and forth to break stud loose and remove the stud (see Figures 4 and 5).

In This Kit		
Part #	Description	Qty
8076169	CONTACTOR, 50A TESYS LC1D32B7	1
1087667	PLATE ASSY, CONTACTOR SERVICE	1
8090050	NUT 8-32	3
8197444	INSTRUCTIONS	1

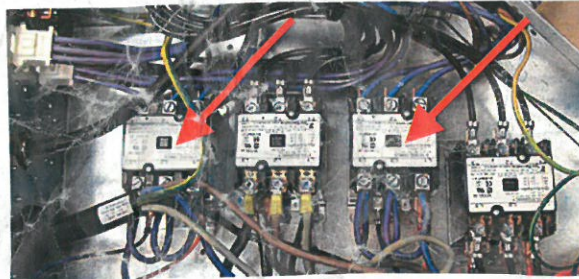


Figure 1

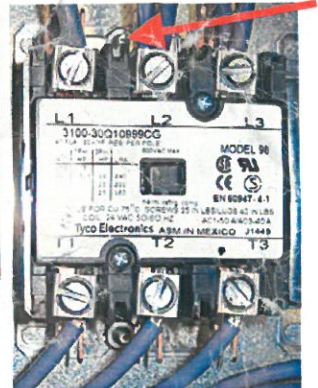


Figure 2



Figure 3



Figure 4



Figure 5

8. With the contactor **upside down** and the bracket holes on top, attach the contactor to the plate assembly by attaching it to the studs with the included nuts (see Figure 6).

9. Attach the plate assembly, with the contactor mounted to the contactor box stud, using a nut removed in step 5 (see Figure 7). Leave the nut loose to ease attaching the wires.

10. Loosen all the screw terminals on the new contactor.

11. Transfer the wires, one at a time, from the old contactor to the new contactor (see Figure 8) and tighten (L1=1, L2=3, L3=5, T1=2, T2=4, and T3=6).

12. Remove any existing terminals from the coil wires and strip the wires (see Figure 9).

13. Insert the coil wires into terminals marked A1 and A2 (see Figure 10 and 11) and tighten.

14. Pull gently on all the wires to ensure that the screws and wires are tight and secure.

15. Replace the contactor cover.

16. Restore power and test to ensure proper function of fryer.

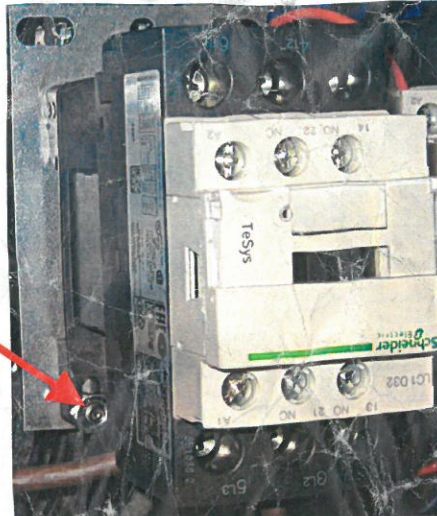


Figure 6



Figure 7

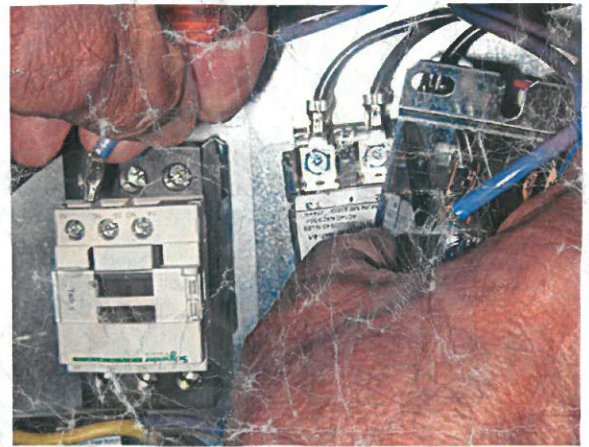


Figure 3



Figure 9



Figure 10



Figure 11