

Instruction Sheet

Subject: 8263417 Schneider Heat Contactor Kit Instructions

Models affected: Electric Fryers

Follow these instructions to replace a standard heat contactor with a Schneider heat contactor, 8076169.

1. Disconnect power from the fryer.
2. Gain access to the contactor box.
3. Remove the contactor cover.
4. Locate the heat contactor(s) to replace (see Figure 1).
5. Loosen the nuts securing the old contactor (see Figure 2).
6. Remove the wires from the old contactor, marking them for reassembly (L1, L2, L3, T1, T2, T3, A1 and A2).
7. The bracket on the top rear of the "new style" contactor is spring loaded (see Figure 3). This allows the contactor to be mounted to a DIN rail. The DIN rail can be snapped in by first inserting it at an angle, while pushing it towards the springs (see Figure 4). Then finally snapping the rail into the bottom of the contactor bracket (see Figure 5).
8. With the DIN rail attached to the contactor, position and center the contactor between the old mounting studs (see Figure 6).
9. While the contactor is centered, mark the position of the bracket and holes (see Figure 7).

In This Kit		
Part #	Description	Qty
8076169	CONTACTOR, SCHNEIDER	1
8104816	DIN RAIL	1
8090361	SCREWS	2
8197444	INSTRUCTIONS	1

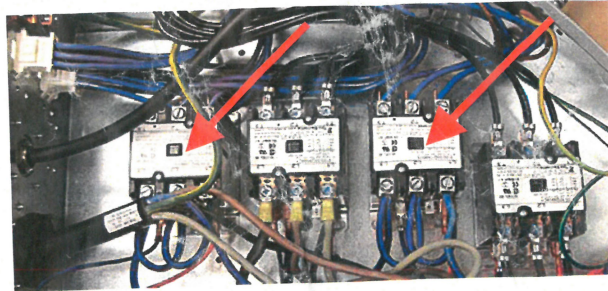


Figure 1

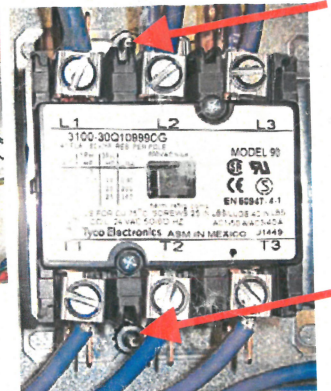


Figure 2

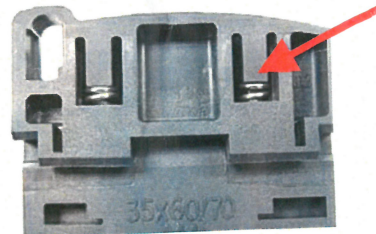


Figure 3

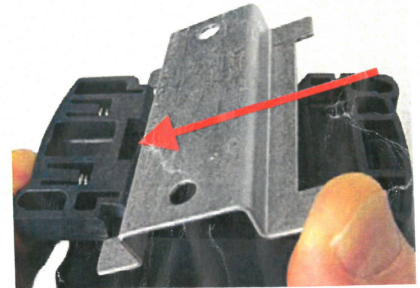


Figure 4



Figure 5

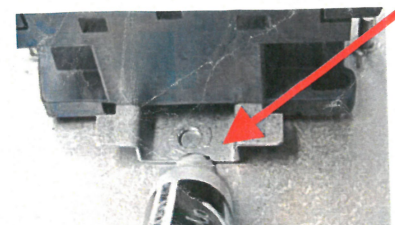


Figure 7

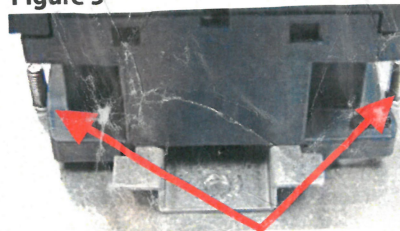


Figure 6

10. Remove the DIN rail from the contactor and using the supplied drill screws attach the DIN rail to the contactor box (see Figure 8 and 9).
11. Loosen all the screw terminals on the new contactor.
12. Reattach the power wires (L1=1, L2=3, L3=5, T1=2, T2=4 and T3=6) and tighten. Pull gently on the wires to ensure that the screws are tight and secure (see Figure 10).
13. Secure the contactor into the DIN rail by inserting the top side first and pulling to snap down the bottom side and secure the contactor to the rail.
14. Remove any existing terminals from the coil wires and strip the wires (see Figure 11).
15. Insert the coil wires into terminals marked A1 and A2 (see Figure 12 and 13) and tighten. Pull gently on the wires to ensure that the screws are tight and secure.
16. Replace the contactor covers.
17. Restore power and test to ensure proper function of fryer.



Figure 8

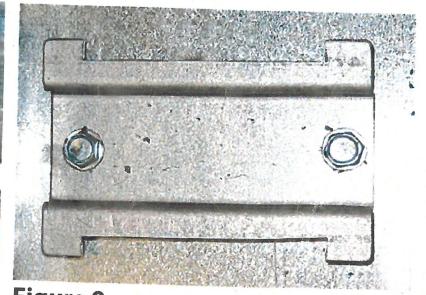


Figure 9

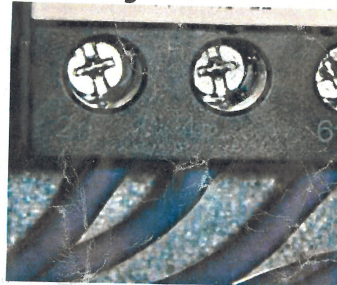


Figure 10



Figure 11



Figure 12

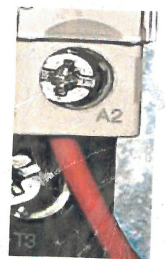


Figure 13