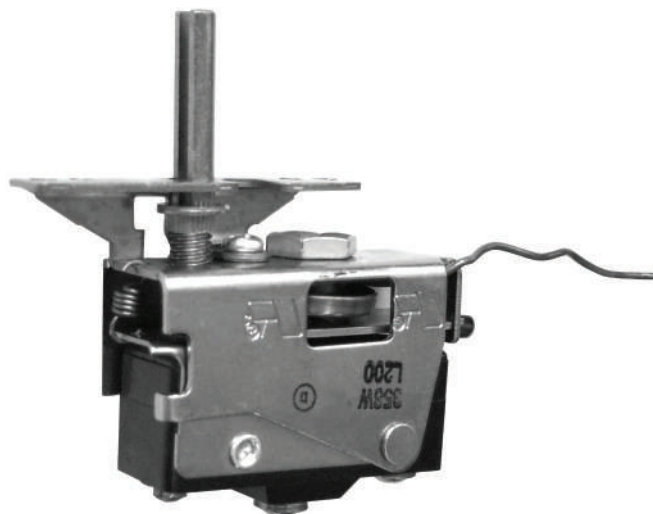


# STEMO 358 Adjustable Remote Sensing Thermostat



## 358 Series

### Product Data:

The 358 series bulb & capillary thermostat's compact design, utilizing rear terminals, permits use in tight spaces where other controls will not fit. The DEMCO listing allows the 358 series to be used in products requiring European approvals.

The SPDT switch action allows for break on temperature rise or temperature fall. The 358 series is available with optional ambient compensation to offset the impact on calibration caused by the thermostat body being installed in high ambient locations.

The 358's close tolerance and narrow differential makes it an ideal choice for use in commercial cooking equipment, warming ovens, commercial dishwashers, water heaters, etc...

The mounting bracket is available with standard mounting centers of 1.750", 1.312", and 28mm making the 358 ideal for use as a replacement thermostat.

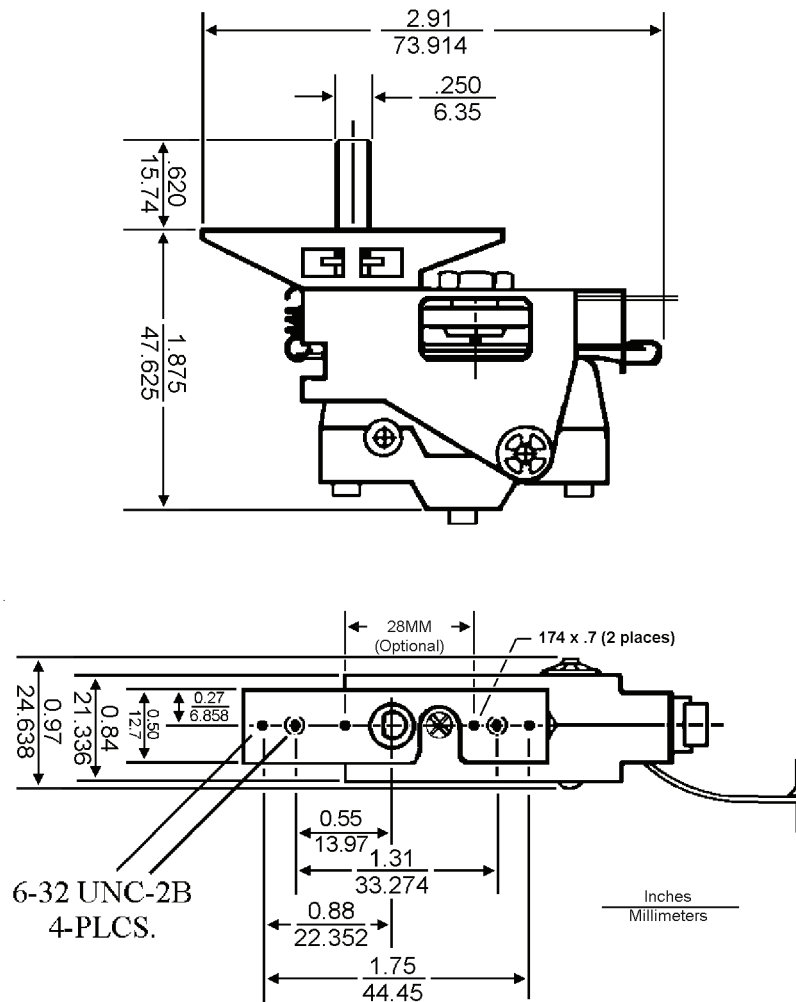
### 358 Features:

Calibration Range:	0°F-600°F
Range Options:	Adjustable
Reset Options:	Automatic
Switch Action:	SPDT
Switch Ratings:	15-30 Amps
Mounting Options:	Panel or Back Mount
Housing:	None
Terminal Location:	Back
Maximum Ambient:	250°F

### Additional Options:

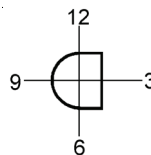
Adjustable Shafts:	Screw Driver or D Shaft
Compensation:	Ambient (optional)
Bulb & Capillary:	Copper, Nickel Plated Copper, One Piece Stainless Steel or Two Piece Stainless Steel

# STEMCO 358 Thermostat Dimensional Drawings



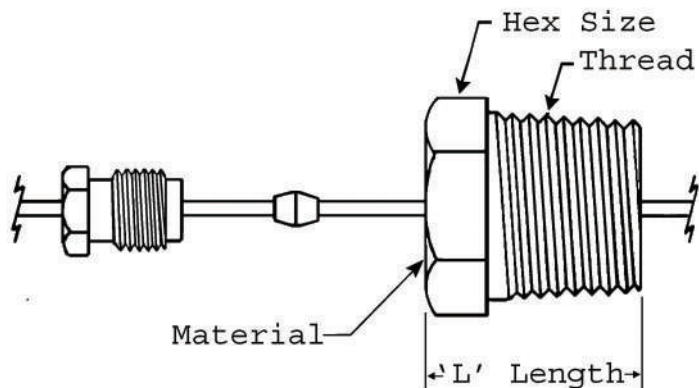
Use this view for determining the position of D-shaft. (shown at 9 O'clock above.) Turn shaft fully counterclockwise

- 12 O'clock
- 3 O'clock
- 6 O'clock
- 9 O'clock



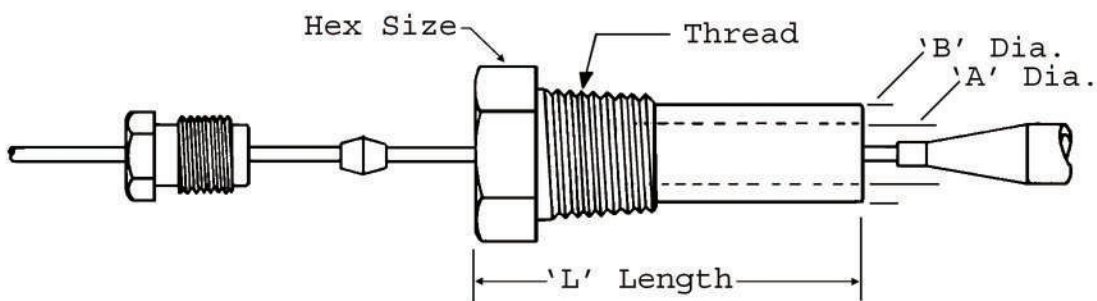
Flat shown at 3 O'clock in diagram.

# STEMO Fittings & Bulb Supports



## Standard Fittings

Thread	Material	Hex Size	'L' Length	Finish	Part #
1/8 NPT	Brass	7/16"	.625"	None	368-67-03061
1/8 NPT	S-Steel	7/16"	.625"	None	368-67-03023
1/4 NPT	Brass	5/8"	.750"	None	368-67-03201
1/4 NPT	Brass	5/8"	.750"	Nickel Plate	368-67-03202
1/4 NPT	S-Steel	5/8"	.750"	None	368-67-03161
3/8 NPT	Brass	11/16"	.750"	None	368-67-03001
3/8 NPT	Brass	11/16"	.750"	Bright Nickel	368-67-03001P
3/8 NPT	S-Steel	11/16"	.750"	None	368-67-03002
1/2 NPT	Brass	7/8"	.875"	None	368-67-03101
1/2 NPT	Brass	7/8"	.875"	Bright Nickel	368-67-03102
1/2 NPT	S-Steel	7/8"	.875"	None	368-67-03103



## Bulb Support Fittings

Thread	Material	Hex Size	'L' Length	'A' Dia.	'B' Dia.	Finish	Part #
1/4 NPT	Brass	5/8"	1.620'	.257'	.390'	None	368-67-03241
1/4 NPT	S-Steel	5/8"	1.620'	.147'	.390'	None	368-67-03242
1/4 NPT	S-Steel	5/8"	1.620'	.257'	.390'	None	368-67-03243
1/2 NPT	S-Steel	7/8"	1.372'	.257'	.315'	None	368-67-03261

# STEMC058 Series Quote Request

Customer: \_\_\_\_\_ QR#: \_\_\_\_\_  
 Attn: \_\_\_\_\_ Date: \_\_\_\_\_  
 Address \_\_\_\_\_ Cust#: \_\_\_\_\_  
 City \_\_\_\_\_ State: \_\_\_\_\_ Zip: \_\_\_\_\_  
 Tel: \_\_\_\_\_ Fax: \_\_\_\_\_  
 Email: \_\_\_\_\_  
 Salesman: \_\_\_\_\_ Agency #: \_\_\_\_\_

Send Quote to: Customer: \_\_\_\_\_ Rep Agency \_\_\_\_\_ (Check one or both)

Application: \_\_\_\_\_  
 Comments: \_\_\_\_\_  
 \_\_\_\_\_  
 \_\_\_\_\_

Est. Yearly Qty: \_\_\_\_\_ Target Cost: \_\_\_\_\_

Control: Max. Exposed Temp.: \_\_\_\_\_ °F. Load \_\_\_\_\_ Amps. Voltage: \_\_\_\_\_ AC, or DC \_\_\_\_\_  
 Load Resistive \_\_\_\_\_, or Inductive \_\_\_\_\_, Terminals: Screws \_\_\_\_\_ or 1/4" QC \_\_\_\_\_  
 Automatic Reset \_\_\_\_\_, IsO Required? Yes \_\_\_\_\_, or No \_\_\_\_\_

Adjustable: High Temp: \_\_\_\_\_ °F, Low Temp: \_\_\_\_\_ °F.  
 Calibrate at: High Stop: \_\_\_\_\_, Low Stop: \_\_\_\_\_, Mid Point: \_\_\_\_\_.  
 Shaft Selection: D-Shaft (for Knob) \_\_\_\_\_, Screw Driver \_\_\_\_\_.  
 Stem Height: \_\_\_\_\_" Diameter: \_\_\_\_\_"  
 D-Shaft - Flat Dimension: \_\_\_\_\_" Flat Position: \_\_\_\_\_ O'clock

Bulb: Maximum Exposed Temp.: \_\_\_\_\_ °F Max Length: \_\_\_\_\_" Max Dia. \_\_\_\_\_"  
 What is Bulb \_\_\_\_\_, Immersed into: \_\_\_\_\_

Capillary: Material: Copper \_\_\_\_\_, Nickel Plated Copper \_\_\_\_\_, 1 Pc Stainless Steel \_\_\_\_\_, or  
 2 Pc Stainless Steel \_\_\_\_\_, Length \_\_\_\_\_" Max Exposed Temp. \_\_\_\_\_ °F

**The following are available options: Select all that apply.**

Mounting Options Standard Front Mount: \_\_\_\_\_  
 Rear Mount Option \_\_\_\_\_

NPT Fittings: 1/8": 368-67-30061 \_\_\_\_\_, 368-67-03023 \_\_\_\_\_  
 Page 3 1/4": 368-67-03201 \_\_\_\_\_, 368-67-03202 \_\_\_\_\_, 368-67-03161 \_\_\_\_\_  
 3/8": 368-67-03001 \_\_\_\_\_, 368-67-03001P \_\_\_\_\_, 368-67-03002 \_\_\_\_\_  
 1/2": 368-67-03101 \_\_\_\_\_, 368-67-03102 \_\_\_\_\_, 368-67-03103 \_\_\_\_\_

NPT Supports: 1/4": 368-67-03241 \_\_\_\_\_, 368-67-03242 \_\_\_\_\_, 368-67-03243 \_\_\_\_\_  
 Page 3 1/2": 368-67-0326 \_\_\_\_\_

Fax Quote Request to Customer Service: 419-818-0897