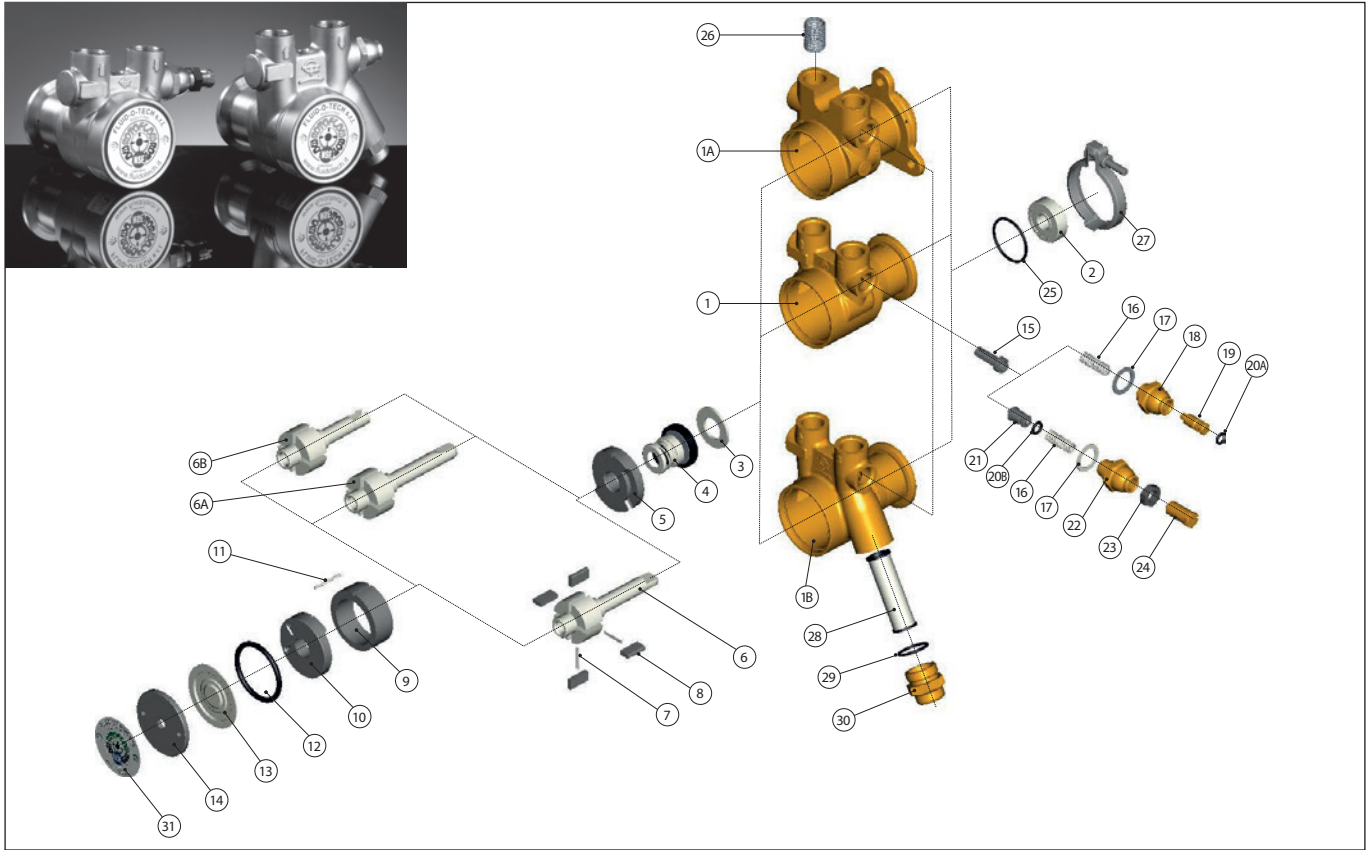


Brass rotary vane pumps

PO 70-400 series



POS	DESCRIPTION	MATERIAL	CODE	NOTES
1	HOUSING	BRASS	22-01-01	NPT PORTS
			22-01-02	GAS PORTS
1A	HOUSING WITH FLANGE	BRASS	22-01-54	NPT PORTS
			22-01-55	GAS PORTS
1B	HOUSING WITH FILTER	BRASS	22-01-08	NPT PORTS
			22-01-09	GAS PORTS
2	BALL BEARING	STEEL	90-22-01	
3	WASHER	S.S.	22113	
4	MECHANICAL SEAL	CERAMIC/NBR	90-40-01	NSF/WRAS
		CERAMIC/VITON®	90-40-03	
		CERAMIC/EPDM	90-40-05	
5	REAR FLANGE	GRAPHITE	22-03-08	
6	I-SHAPED ROTOR	S.S.	22-02-01	
6A	D-SHAPED ROTOR	S.S.	22-02-02	
6B	F-SHAPED ROTOR	S.S.	22-02-11	
7	VANE PIN	S.S.	22-07-02	70-100 l/h
			22-07-03	150 l/h
			22-07-04	200 l/h
			22-07-05	250 l/h
			22-07-06	300 l/h

POS	DESCRIPTION	MATERIAL	CODE	NOTES	
7	VANE PIN	S.S.	22-07-07	350 l/h	
			22-07-08	400 l/h	
8	VANE	GRAPHITE	22-04-03		
			22-05-17	70 l/h	
			22-05-18	100 l/h	
			22-05-19	150 l/h	
			22-05-21	200 l/h	
			22-05-23	250 l/h	
			22-05-24	300 l/h	
			22-05-25	350 l/h	
9	LINER	GRAPHITE	22-05-27	400 l/h	
10	FRONT FLANGE	GRAPHITE	22-03-06		
11	ALIGNMENT PIN	S.S.	22-07-01		
12	O-RING	NBR	90-23-13	NSF/WRAS	
		VITON®	90-23-21		
		EPDM	90-23-14		
13	SHAPED DISK	S.S.	22701		
14	THREADED CUP	ALUMINUM	22-08-02		
15	OPEN BYPASS VALVE	BRASS	22307		
		PLASTIC	22-16-13		
		BRASS	22-16-02		
16	BYPASS SPRING	S.S.	22505		
17	WASHER	NYLON®	22-12-01	NSF/WRAS	
18	STANDARD BYPASS NUT	BRASS	22-20-01		
19	STANDARD BYPASS SCREW	BRASS	22-17-03		
			NBR	90-23-16	NSF/WRAS
			VITON®	90-23-20	
20A	BYPASS SCREW O-RING	EPDM	90-23-24		
		NBR	90-23-138		
		VITON®	90-23-141		
20B	BALANCED BYPASS SCREW O-RING	EPDM	90-23-140		
21	BYPASS PLUNGER	BRASS	22-18-13		
		PLASTIC	22-18-09		
22	BALANCED BYPASS NUT	BRASS	22-20-12		
23	LOCK NUT	PLASTIC	22-20-09		
24	BALANCED BYPASS SCREW	BRASS	22-17-02		
25	BALL BEARING SEAT O-RING	NBR	90-23-26		
26	RETAINER SPRING	S.S.	22023		
27	ASSEMBLED CLAMP	S.S.	94-80-01		
28	MAIN FILTER	S.S./PLASTIC	22-82-03	100 MESH	
		NBR	90-23-03		
		VITON®	90-23-17		
29	FILTER NUT O-RING	EPDM	90-23-15		
30	FILTER NUT	BRASS	22-20-03		
31	LABEL		99-01-01		
			99-01-02	NSF	

Fluid-o-Tech reserves the right to alter the specifications indicated in this catalogue at any time and without prior notice.

Fluid-o-Tech srl
Via Leonardo da Vinci, 40
20094 Corsico, Milano, Italy
Tel. +39 02 9995 01
Fax +39 02 9995 0999
info@fluidotech.it

Fluid-o-Tech Int'l Inc.
161 Atwater St.,
06479 Plantsville CT (USA)
Tel. +1 (860) 276 9270
Fax +1 (860) 620 0193
info@fluid-o-tech.com

Fluid-o-Tech Int'l Inc. Japan
201, 4-3-10, Todoroki,
Setagaya, Tokyo 158-082, Japan
Tel. +81 (0) (3) 6432 1812
Fax +81 (0) (3) 6432 1813
erkkato@fluidotech.jp

Fluid-o-Tech Asia (Shanghai) Co., Ltd.
2/F, Factory building 6 (1), No. 258, Zhijiang Road,
Fengxian District, Shanghai City, Z.P.: 201499 China
Tel. +86 (021) 67100 838
Fax +86 (021) 67100 605
info@fluidotech-asia.com