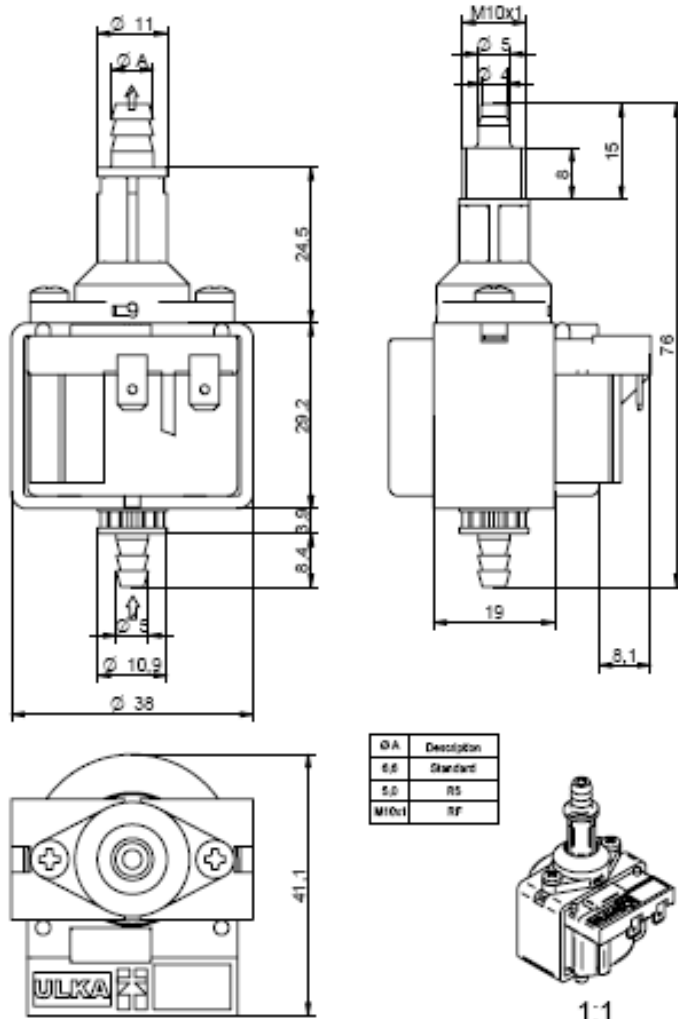


Family pump NME



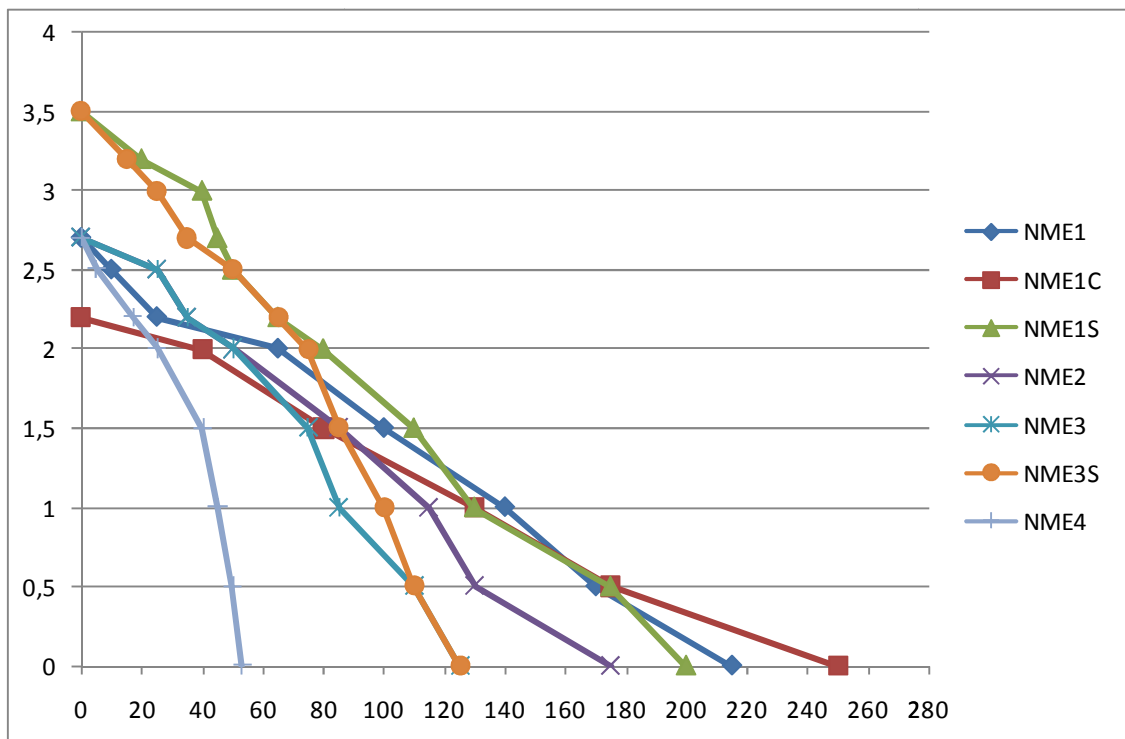
- Class see table below
- Electrical insulation, class II
- ED see table below
- Available version with or without diode integrated

Description	Technical data	
	Body material	PA66/POM/PPS
	Seal material	NBR (OTHER MATERIAL AVAILABLE ON REQUEST)
	Electrical connection	4,7 x 0,8 fast-on terminal
Insulation class	F	

<p>"Tutte le tipologie di pompe sono progettate e verificate utilizzando come fluido l'acqua. Sconsigliamo stoccaggi lunghi e/o temperature di magazzino elevate soprattutto con pompe prive di acqua all'interno: in questi casi vi suggeriamo di contattare il nostro ufficio tecnico per consigli in proposito ad evitare malfunzionamenti delle pompe."</p>	<p>"All types of pumps are designed and tested using water as the fluid. We do not recommend stocks long and / or high storage temperatures above pump without water inside: in these cases, we suggest that you contact our technical department for advice in this regard to prevent malfunction of the pump."</p>
<p>"Per il raccordo di uscita in plastica (versione EP) l'indicazione del filetto G 1/8" è indicativa e non può essere soggetta per il controllo alla norma UNI EN ISO 228/2; la tenuta non è garantita dal filetto, ma dalla guarnizione (vedere indicazioni a pagina 6)"</p>	<p>"For the outlet fitting plastic (EP version) an indication of the thread G 1/8" is indicative and cannot be subjected to control according the UNI EN ISO 228/2; the seal is not guaranteed by the thread, but by the sealing (see the instructions on page 6)"</p>

NME

Pressure [bar]	NME1	NME1C	NME1S	NME2	NME3	NME3S	NME4
0	215	250	200	175	125	125	53
0,5	170	175	175	130	110	110	50
1	140	130	130	115	85	100	45
1,5	100	80	110	85	75	85	40
2	65	40	80	50	50	75	25
2,2	25	0	65	35	35	65	17
2,5	10	---	50	25	25	50	5
2,7	0	---	45	0	0	35	0
3	---	---	40	---	---	25	---
3,2	---	---	20	---	---	15	---
3,5	---	---	0	---	---	0	---



Type NME

Model	Voltages	ON/OFF	Class	W	Certificates
NME	230-240V~50Hz	ED 100%	F	16	VDE
	220V~60Hz	ED 100%	F	16	
	120V~60Hz	ED 100%	F	16	UL
	100V~50-60Hz	ED 100%	F	16	
	24V~50-60Hz	ED 100%	F	16	