

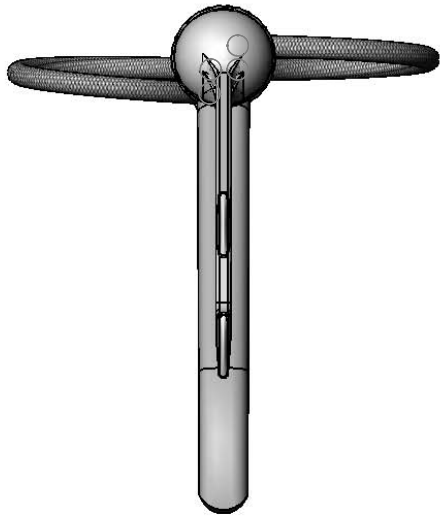


**T&S BRASS AND BRONZE WORKS, INC.**  
 2 Saddleback Cove / P.O. Box 1088  
 Travelers Rest, SC 29690

Model No.  
**EA-1DF09-LH**

Item No.

Travelers Rest, SC: 800-476-4103 • Simi Valley, CA: 800-423-0150 • Fax: 864-834-3518 • www.tsbrass.com



This Space for Architect/Engineer Approval

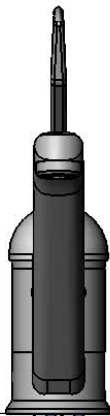
Job Name \_\_\_\_\_ Date \_\_\_\_\_

Model Specified \_\_\_\_\_ Quantity \_\_\_\_\_

Customer/Wholesaler \_\_\_\_\_

Contractor \_\_\_\_\_

Architect/Engineer \_\_\_\_\_



8 1/2"  
[215mm]

6"  
[149mm]

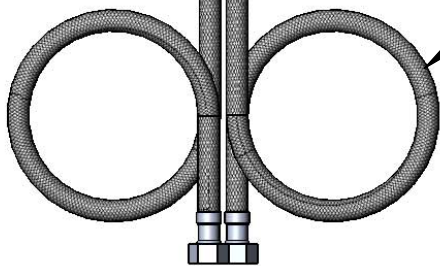
4 15/16"  
[125mm]

9"  
[230mm]

10 7/16"  
[266mm]

Aerator

Mounting Surface



13 7/8" [352mm] Long Flexible Stainless Steel Supply Hoses (2)

Ø 2 3/16"  
[55mm]

G 3/8" Female Inlets

Rough-In Requirement:  
 Ø 1 1/2" [38mm] Hole

Product Specifications:  
 Single Lever Faucet w/ 9" Swivel Nozzle & Extended Handle

Drawn <b>DHL</b>	Checked <b>DMH</b>	Approved <b>JHB</b>
Scale: <b>1:4</b>		Date: <b>10/29/13</b>