

Motor shaft gasket

22.08.2012



30 min.



Standard tools, fan wheel puller, protective gloves



All Rational units

Please forward this information directly to all members of your service department!

Attention: You find an animated mounting instruction in the Rational Service Portal.



We're using new „full floating“ motor shaft gaskets with immediate effect.

In order to avoid premature wearing out of the motor shaft gasket we have created a new double lip motor shaft gasket.

When you order a motor shaft gasket 5001.0207 (17mm) or 22.00.083 (15mm) you will receive a modification kit with new motor shaft gaskets and the corresponding gasket flanges plus an assembly tool.

The following kits are available:

87.00.564 Modification kit for 15mm Motor shaft from 04/2004 (SCC, CM und SCC_WE, CM_P 61-202)

87.00.563 Modification kit for 17mm Motor shaft (Classic, C-Line and CPC Line 61-201)

Sample pic:



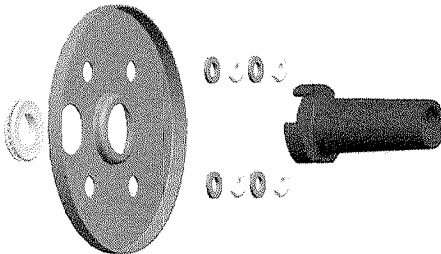
The kits exist of:

87.00.564 (15mm)

Part number

Motor shaft gasket	22.00.985
Gasket flange SCC_WE	22.00.721
Gasket flange 04/2004	22.00.123
Mounting support gasket flange	22.00.722
Assembling tool	91.00.534
3ea flange nut M5	10.01.065
4ea washer A6.4	1306.0120
4ea nut M6	1106.0220

Sample pic:



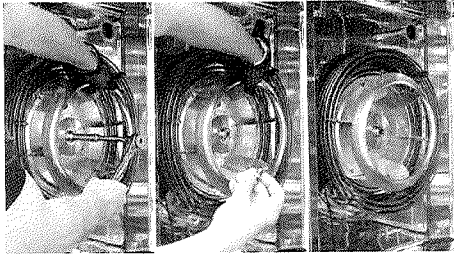
87.00.563 (17mm)

Part number

Motor shaft gasket	22.00.987
Gasket flange 04/2004	22.00.123
Gasket flange Classic, C-line	2016.0876
Gasket flange CPC	8514.1343
Assembling tool	91.00.704
4ea washer A6.4	1306.0120
4ea nut M6	1106.0220

Disconnect unit from power supply

2. Open cabinet door.
3. Remove the left hinging rack and the air baffle.



4.



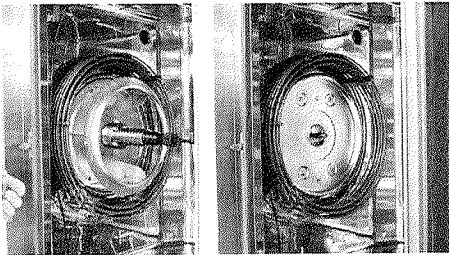
Attention!

Wear protective gloves.

Remove the fan wheel.

Loose the 13mm fan wheel hex screw and remove it.

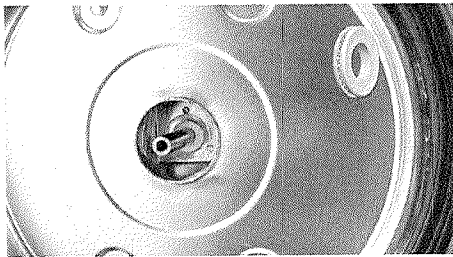
Screw in the centering screw from your puller. Insert the bolt with the centering hole from your rational fan wheel puller set. Insert fully and screw out again by 2 turns.



5.

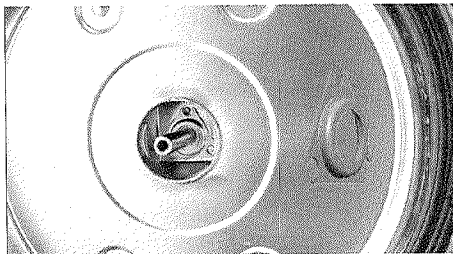
Adjust the fan wheel puller onto the centering screw and pull the fan wheel.

Remove motor shaft gasket and the flange.



6.

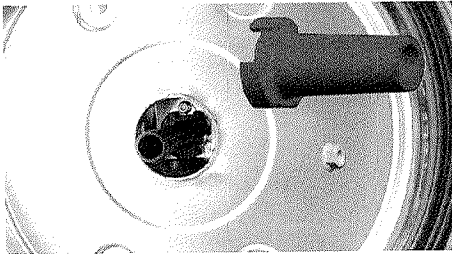
Assemble the new motor shaft gasket.



7.

Adjust the flange for the motor shaft gasket.

8.

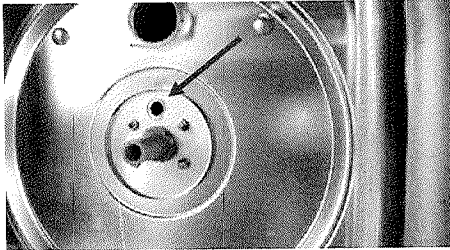


Centre the flange and the gasket with the adjusting tool.

Fix it with the three flange nuts.

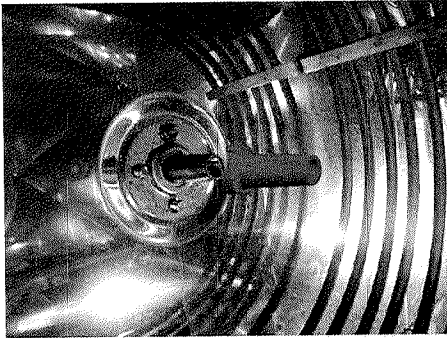
Remove the adjusting tool.

9.



Units with index E to G:
When re-assembling make sure the hole in the flange is placed over the hole in the cabinet (in 12 o'clock position).

10.



Classic line units CD-CM-CC
Mounting according to point 8 above.

11. Assemble the fan wheel. The fan wheel hex screw must be tightened with torque 38 Nm!
12. Install the air baffle and the left hinging rack.
13. Run a calibration.

With best regards

Your RTS Service team.

<https://portal.rational-online.com>

© 2012 Rational Technical Services. All rights reserved.
Please note that any technical information concerning Rational products must Not be forwarded to any third party!

