

Applies to door latch 207147



Read the installation instructions for the units and observe the safety information.

The target group for these fitting instructions is qualified personnel who are familiar with the technical functioning and operation of the unit.

Notes on safety

Organisational measures

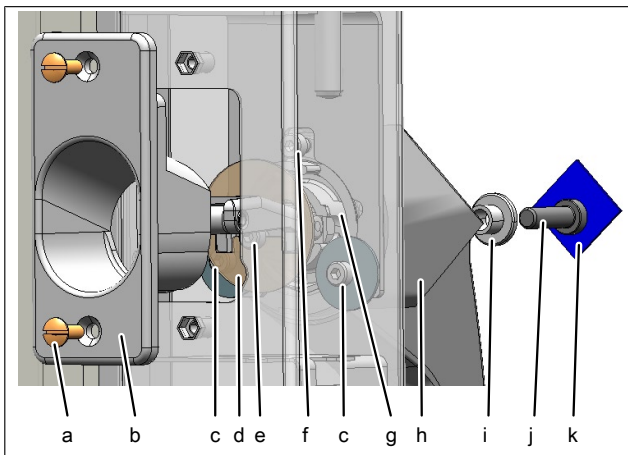
Risk of property damage and personal injury from lack of organizational measures

- Use equipment and protective gear suitable for the activity.

Required tools

- Allen key 2.5 mm
- Allen key 3 mm
- Allen key 5 mm
- Torx T15
- Slot screwdriver

Complete overview of door latch



- | | |
|-------------------------|---------------------|
| a Screw | b Cover cap |
| c Screw with washer | d Cover plate |
| e Screw for cover plate | f Screw |
| g Door latch | h Door handle |
| i Spacer sleeve | j Door handle screw |
| k Sticker | |

Removing door latch

1. Unscrew the cover cap screws on the inside of the door.
↳ Keep the screws for fastening again.
2. Remove the cover cap.
↳ Dispose of the cover cap.
3. Unscrew the cover plate screw.
↳ Keep the screw for fastening again.
4. Remove the cover plate from the door latch.
5. Unscrew the three screws on the door latch.
↳ Dispose of the screws.
6. Pull the handle out with the door latch from the outside.
7. Remove the sticker from the handle.
8. Unscrew the screw on the handle.
9. Take out the spacer sleeve.
10. Remove the door latch from the handle and dispose of it.

Installing the door latch

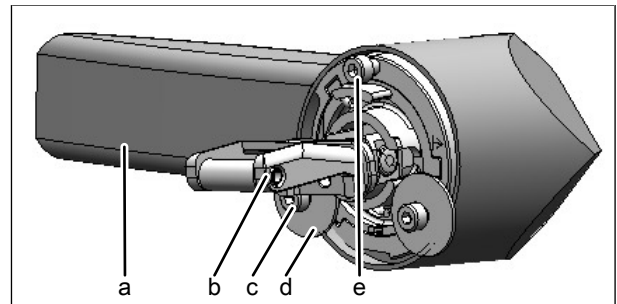


Image: Door latch and door handle fitting position

- | | |
|----------------|--------------|
| a Door handle | b Door latch |
| c Bottom screw | d Washer |
| e Top screw | |

⚠ CAUTION

Do not unscrew the screws on the door latch before fitting, otherwise the door latch becomes unusable.

⚠ CAUTION

Only use the screws on the new door latch. When fitting the screws, use a thread-locking fluid (permanent fixing).

1. Insert the door handle in the position shown.
2. Insert the spacer sleeve in the handle.
3. Fasten the door latch in the handle with the screw and tighten it firmly.

4. Unscrew the screws and washers from the door latch.
 - ↳ Make sure that the screws are not mixed up, since they are different lengths.
 - ↳ Both the bottom screws are fitted with the washers.
5. Insert the handle with the door latch in the door from the outside.
6. Use a thread-locking fluid (permanent fixing) for the screws.
7. Screw the screws into the door latch from the inside.
8. Tighten all the screws firmly.
9. Attach the cover plate to the door latch in the position shown from the inside.
10. Fit the screw for the cover plate.

Installing the cover cap

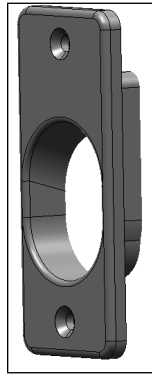


Image: Enclosed cover cap for door latch

ATTENTION

Use the new cover cap enclosed.

1. Attach the cover cap in the position shown from the inside.
2. Using the screws, carefully fasten the new cover cap enclosed from the inside.

Testing the function

1. Open and close the door several times.
2. Check that the door latch functions properly.
3. Attach the sticker to the handle.