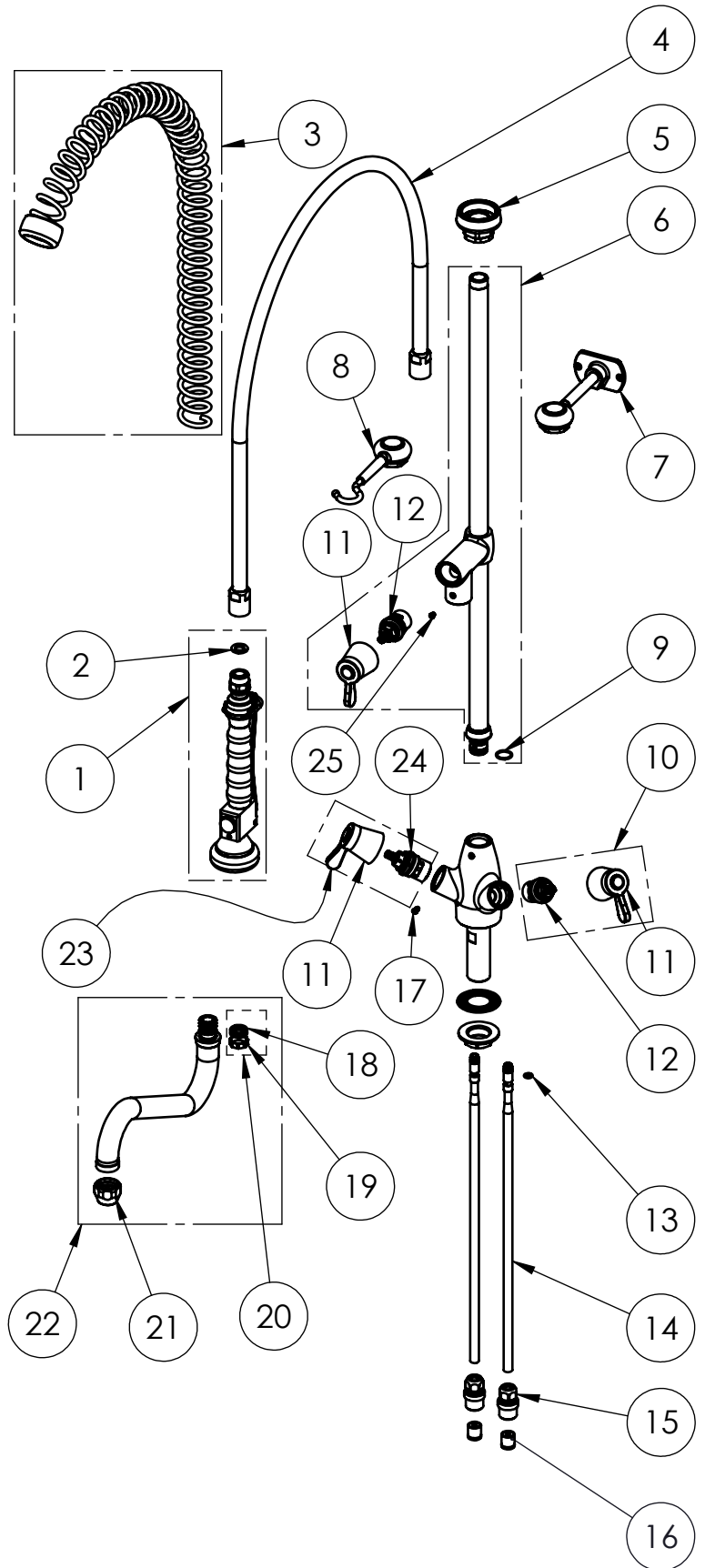


TITLE / DESCRIZIONE	DRN / DIS	CHD / VER	APPR
Single hole, mixing temperature, deck mount Pre-Rinse Unit with riser add-on faucet with 250mm swivel nozzle (Ø 25mm), 80mm-long mounting shank, G1/2" male inlets with check valves, G3/4" high flow ¼ turn ceramic headworks, riser tube – stainless steel, brass, chrome plated. 16L/min KLARCO "NEW" spray valve.	SCALE / SCALA 1:10	DATE / DATA 24/02/2020	SHEET / PAG 1 of 2
This drawing contains proprietary information which is the property of KLARCO S.R.L. without whose written permission it may not be copied, shown or handed to a third party or otherwise used	Questo disegno contiene informazioni di proprietà di KLARCO S.R.L. e senza la sua autorizzazione scritta non può essere copiato, mostrato o ceduto a terzi o in qualsiasi altro modo usato	NUMBER / CODICE DIS.	MODEL / PRODOTTO 3E.2100.S3.F9

NUMBER / CODICE DIS.	MODEL / PRODOTTO 3E.2100.S3.F9	A4V
----------------------	--------------------------------	-----

ITEM NO.	SALES NO.	DESCRIPTION
1	P020	SPRAY VALVE "NEW"
2	P074	FLAT GASKET 1/2" Ø18,5x11 sp.2mm
3	P005	OVERHEAD SPRING "GREY"
4	P004	100cm Ø17 F1/2"xF1/2" FLEXIBLE HOSE
5	P007	SPRING CHROMED SUPPORT
6	P217/F9	650mm G1/2" RISER W.ADD ON TAP,HANLDE, CERAMIC HEADWORK AND O-RING
7	P034	115mm WALL BRACKETCHROMED
8	P035	SPRAY VALVE CHROMED SUPPORT
9	P076	O-RING 2062 (Ø15.6x1.78), EPDM 70 PEROX
10	V0F9/B	COMPLETE HANDLE W.BLUE CODED INDEX +CERAMIC HEADWORK KIT
11	H009/color	"VOX" HANDLE W. COLOR CODED INDEX (specify the color B or R)
12	V0F0/D	HIGH FLOW G3/4" CERAMIC HEADWORK (SHORT PIN - RH)
13	P158	O-RING 106 (Ø6.75x1.78), EPDM 70
14	P498	COPPER PIPE L.420mm w.O-RING
15	P110	Compression Male G1/2 fitting
16	P030	BACKFLOW PREVENTER DW15/DN10
17	P241	SPOUT SCREW (Long)
18	P072	O-Ring 119 (Ø 15,08 x 2,62mm) EPDM 70
19	P592	SWIVEL SLEEVE
20	P613	#2 OR+#1 SWIVEL SLEEVE KIT FOR FAUCET/OUTLET
21	P014	STREAM REGULATOR OUTLET (Ø25 SPOUT)
22	C0S3	SWING NOZZLE Ø25x250 h.60
23	V0F9/R	COMPLETE HANDLE W.RED CODED INDEX +CERAMIC HEADWORK KIT
24	V0F0/S	HIGH FLOW G3/4" CERAMIC HEADWORK (SHORT PIN - LH)
25	P236	SPOUT SCREW (short)



TITLE / DESCRIZIONE

Single hole, mixing temperature, deck mount Pre-Rinse Unit with riser add-on faucet with 250mm swivel nozzle (Ø 25mm), 80mm-long mounting shank, G1/2" male inlets with check valves, G3/4" high flow ¼ turn ceramic headworks, riser tube – stainless steel, brass, chrome plated. 16L/min KLARCO "NEW" spray valve.

This drawing contains proprietary information which is the property of KLARCO S.R.L. without whose written permission it may not be copied, shown or handed to a third party or otherwise used

Questo disegno contiene informazioni di proprietà di KLARCO S.R.L. e senza la sua autorizzazione scritta non può essere copiato, mostrato o ceduto a terzi o in qualsiasi altro modo usato

DRN / DIS

SCALE / SCALA 1:8

NUMBER / CODICE DIS.

CHD / VER

DATE / DATA 24/02/2020

MODEL / PRODOTTO

3E.2100.S3.F9

APPR

SHEET / PAG 2 of 2

A4V