

Identification: A14 - N900, A16 - N700
Tech. Bulletin n°: PDX2008-05
Date: 09-06-2008
Issuer: M. Scalon (TT&S)
Factory: PD-Vallenoncello Modular Cooking



Subject QUALITY IMPROVEMENT: MERTIK GAS VALVES.

Model **N700:**
Fryers: 178114, 178115, 178191, 178198, 178414, 178415, 178714, 178715.
Static oven: 178004, 178005, 178006, 178082, 178083, 178085, 178192, 178195, 178209, 178210, 178304, 178305, 178382, 178383, 178604, 178605, 178606, 178682, 178683, 178685, 178809, 178810.
Bain Marie: 178156, 178756.
Multifunction cooker: 178102, 178103, 178402, 178403, 178702, 178703.

N900:
Fryers: 200336, 200337, 200340, 200341, 200361, 210336, 210337, 210340, 210341, 210361, 220336, 220337, 220340, 220341, 220361.
Fry Tops: 200180, 200181, 200182, 200183, 200184, 200185, 200186, 200201, 210180, 210181, 210182, 210183, 210184, 210185, 210186, 210201, 220180, 220181, 220182, 220183, 220184, 220185, 220186, 220201.
Static oven: 200102, 200104, 200105, 200116, 200117, 200118, 200121, 200145, 200148, 200152, 200154, 200155, 200157, 200162, 200164, 200201, 200231, 200232, 200233, 210102, 210104, 210105, 210116, 210117, 210118, 210121, 210145, 210148, 210201, 210231, 210232, 210233, 220102, 220104, 200105, 220121, 220201, 220231, 220232.

ELECTROLUX PROFESSIONAL SPA
POSTAL ADDRESS
V.le Treviso 15
33170 PORDENONE – ITALIA

TELEPHONE
+39 0434 380582
+39 0434 380583

TELEFAX
+39 0434 380577

E-MAIL ADDRESS
claudio.marziani@electrolux.it
mara.scalon@electrolux.it

Tech. Bulletin PDX2008-05

Static big oven: 200143, 200149, 200161, 210143, 210149.

Bain Marie: 200261, 200262, 210261, 210262, 220261, 220262.

Multifunction cooker: 200313, 210313.

- Problem**
- If forced by end user, the thermostatic knob of the valve breaks.
 - Possible mistakes when fitting back the external knob.

- Reason** Quality improvement to have:
- strong solution for the thermostatic knob of the valve,
 - one precise position for fitting the external knob.

Actions in factory The plastic thermostatic knob has been replaced with a brass knob with D – stem connection.

The connection of the external thermostatic knobs has been modified to fit the new brass knob (made as the one used on gas taps).

In the table below the new spare part codes of the gas valves and relevant thermostatic knobs for the different brands:

	VALVE SPARE PART CODE		THERMOSTATIC KNOB SPARE PART CODE					
	<i>Old</i>	<i>New</i>	<i>Zanussi</i>		<i>Electrolux</i>		<i>Alpeninox</i>	
			<i>Old</i>	<i>New</i>	<i>Old</i>	<i>New</i>	<i>Old</i>	<i>New</i>
Fryers	0C0624	0C5248	0C0189	0C5251	0C2231	0C5254	0C1233	0C5252
Fry tops	006692	0C5246			0C2020	0C5253		
Oven	0C0209	0C5247			0C2023	0C5256		
Big oven	0C1729	0C5250			0C2127	0C5255		
Bain marie	0C0444	0C5249			0C2020	0C5253		
Multifunction cooker	006460	0C5245						

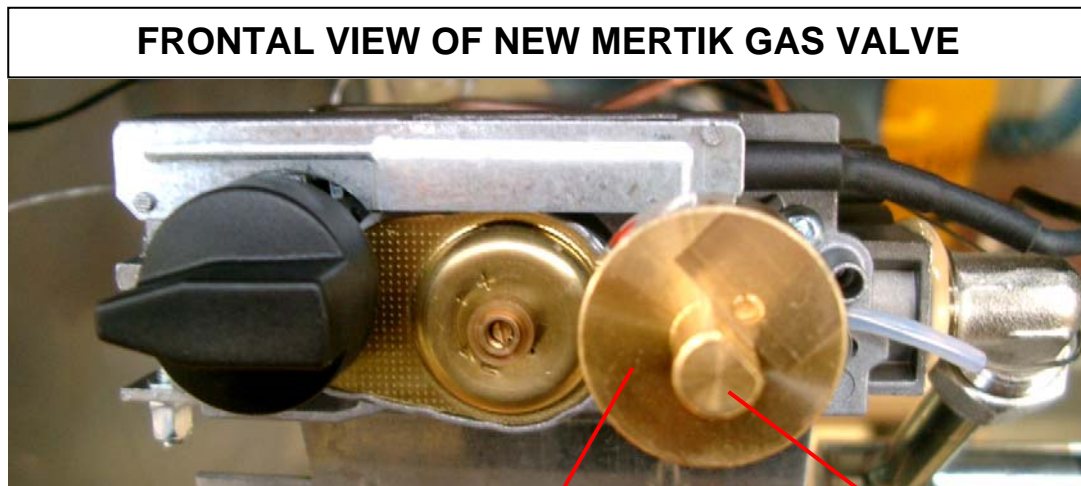
Modifications on fryer and frytop from s/n 817...

Modifications on oven, big oven, bain marie, fixed bratt pan from s/n 819...

Actions in field

The new Mertik gas valves are interchangeable with the old one, changing also the external knob (see table on page 2).

The present modification can be retrofitted but it is not mandatory



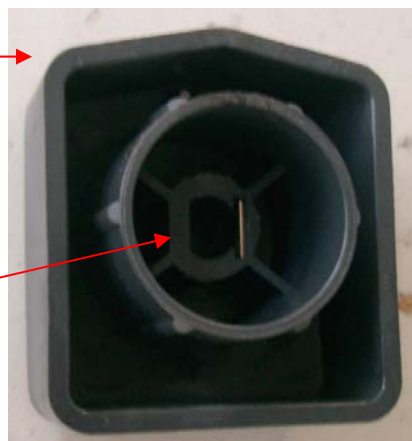
The picture shows the valve for fryers models

Thermostatic brass knob

D-stem shaft

New external knob suitable for the new valve knob

D shape connection for the brass knob



Identification: A01- HD900, A09 – PR700
Tech. Bulletin n°: **PDX2008-06**
Date: 16-06-2008
Issuer: M. Scalon (TT&S)
Factory: PD-Vallenoncello Modular Cooking



Subject NEW MERTIK GAS VALVES ON PR700 AND HD900 APPLIANCES.

Model **PR700:**
Multifunction cooker: 168038, 168039, 168438, 168439, 168838, 168839.

HD900:
Fryers: 201040, 201041, 201052, 211040, 211041, 211052, 221040, 221041, 221052.

Fry Tops: 200603, 200604, 200607, 200608, 200609, 200610, 200611, 210603, 210604, 210607, 210608, 210609, 210610, 210611, 220603, 220604, 220607, 220608, 220609, 220610, 220611.

Problem See PDX2008-05.

Reason The thermostatic knob of the valve has been changed (see PDX2008-05).

Actions in factory An adapter has been developed to fit the old external thermostatic knob on the new valves.

Adapter spare part code : **0C5400**

ADAPTER



FRONT VIEW



BACK VIEW

Actions in field

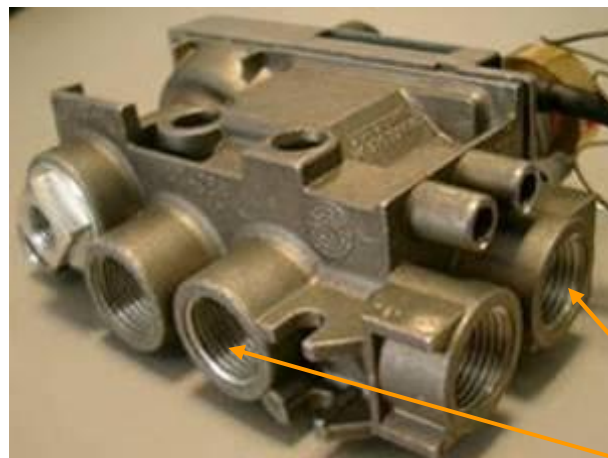
When replacing the old valve with the new one on PR700 and HD900 appliances, it is necessary to fit the adapter **0C5400** between the new brass knob of the valve and the old external knob (see installation instructions on pages 3-4).

Only for HD900 fryers:

the old valve 006574 is replaced by the new valve **0C5248**, used in the N900 fryers.

The old valve has only one gas inlet hole and one gas outlet hole, the new one has 2 gas inlet holes and 2 gas outlet holes.

To fit the valve **0C5248** to HD900 fryer is necessary to have 2 stoppers **0C0625** for closing the gas inlet and outlet holes not used.



New valve for HD fryers

0C0625



In the table below the relevant spare part codes for the involved appliances:

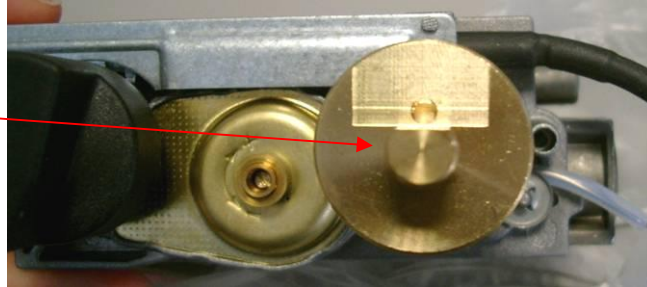
	<i>Old spare part code</i>	<i>New spare part code</i>	<i>Adapter</i>	<i>Stoppers</i>
Frytops (HD900)	6692	0C5246	0C5400	-
Fryer (HD900)	6574	0C5248	0C5400	0C0625 (2 pieces)
Multifunction cooker (PR700)	6460	0C5245	0C5400	-

The present modification can be retrofitted but it is not mandatory

EXTERNAL THERMOSTATIC KNOB: INSTALLATION INSTRUCTION**FRYTOPS HD900 AND MULTIFUNCTION COOKERS PR700:**

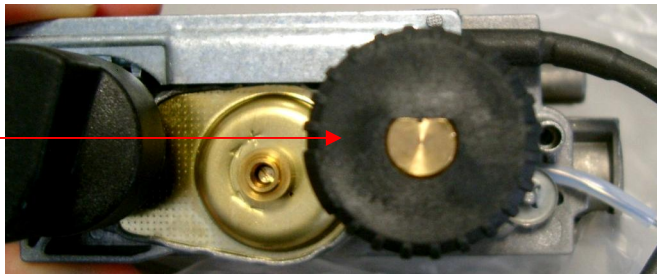
1. Place the brass knob of the valve at the minimum position:

minimum
position of
valve knob

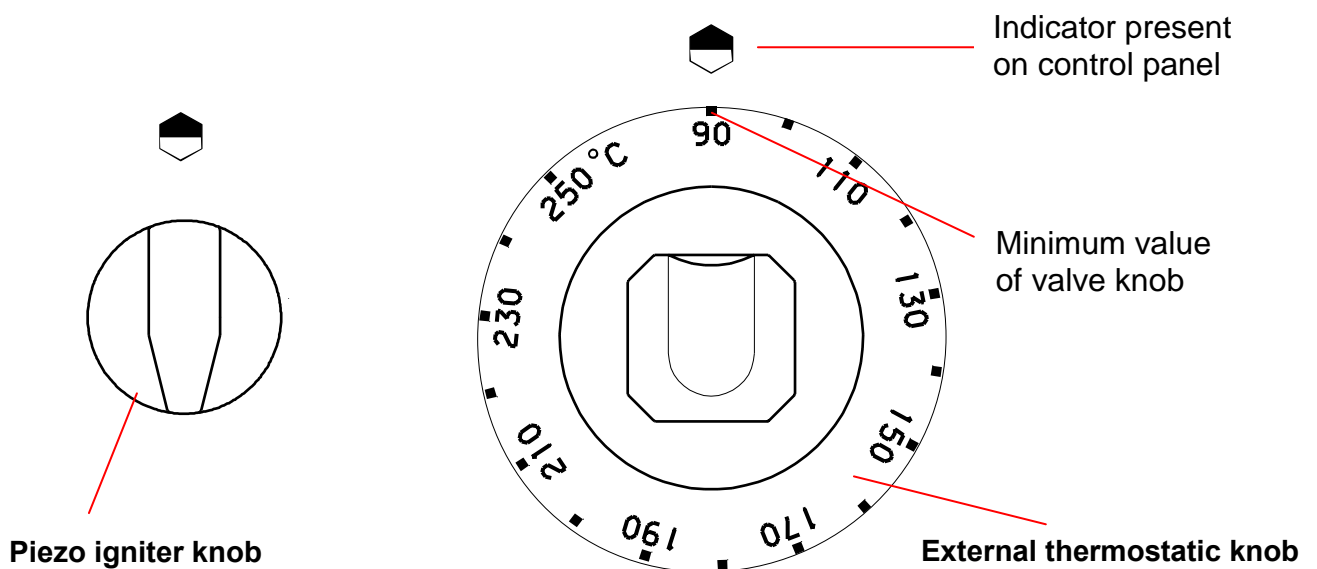


2. Place the adapter on the D-stem shaft:

adapter



3. Place the external thermostatic knob over the adapter and press to fix them together. To place correctly the external thermostatic knob put the minimum value of the knob in correspondence of the indicator placed on the control panel above the knob.

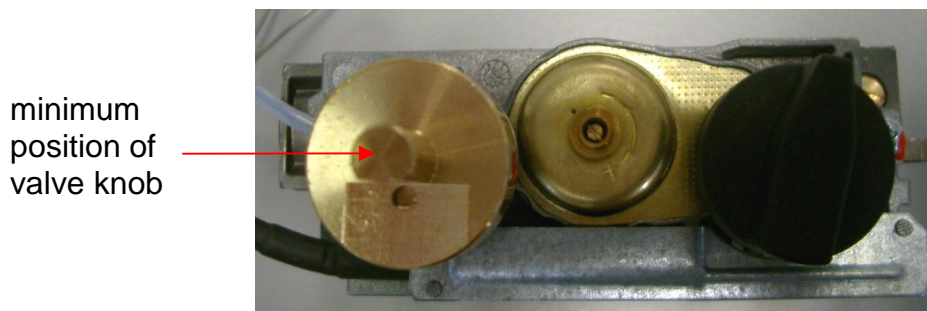


Note: the drawing shows only the knob for frytop HD900

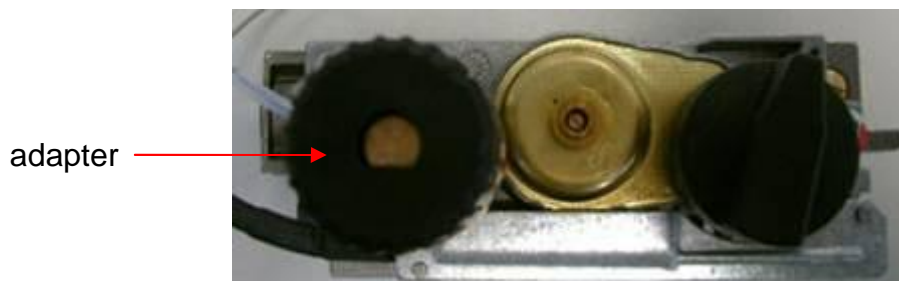
FRYERS HD900:

On HD900 Fryers the valve is placed inside the appliance in the opposite way (thermostatic knob in the left side).

1. Place the brass knob of the valve at the minimum position:



2. Place the adapter on the D-stem shaft:



3. Place the external thermostatic knob over the adapter and press to fix them together. To place correctly the external thermostatic knob put the minimum value of the knob in correspondence of the indicator placed on the control panel above the knob.

