

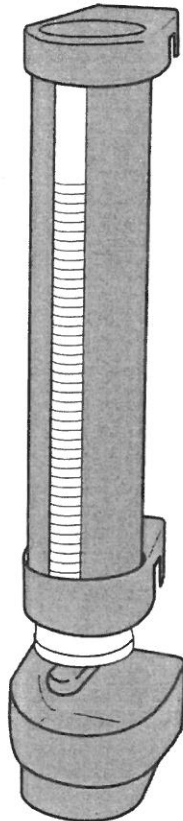


# NEXUS<sup>®</sup> CUP STACKER

## OPERATIONAL INSTRUCTIONS

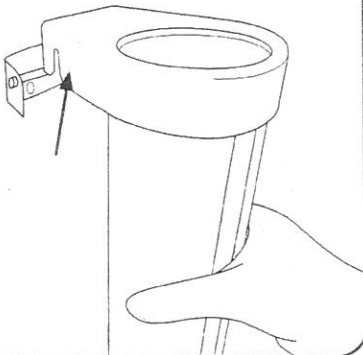
Ensure that all personnel read the points listed within this leaflet and that a copy is given to staff involved with the installation and maintenance of this product. Glasdon recommends that a full Health and Safety analysis is carried out prior to installation.

### NEXUS CUP STACKER



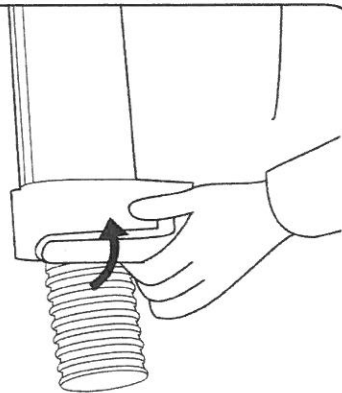
### EMPTYING THE CUP TUBE / DRIP TRAY

1.



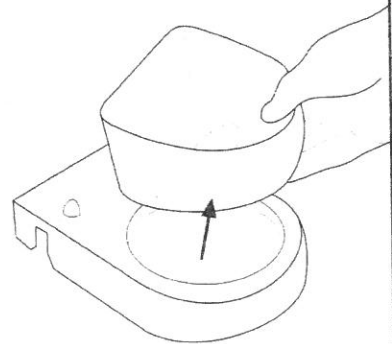
To transport the cup tube, lift off the cup stacker bracket.

2.



To remove the cups, move the quick release 45 degrees to the right.

3.



To empty or clean, remove the drip tray from the drip tray bracket.

# **NEXUS 100**

## **INSTALLATION INSTRUCTION MANUAL**



# NEXUS<sup>®</sup> CUP STACKER

## NEXUS<sup>®</sup> 100 INSTALLATION MANUAL

Ensure that all relevant personnel read the points listed within this leaflet and that a copy is given to staff involved with the installation and maintenance of this product. Glasdon recommends that a full Health and Safety analysis is carried out prior to installation.

PLEASE REFER TO 'THE MANUAL HANDLING OPERATIONS REGULATIONS 1992' DURING HANDLING.

PLEASE REFER TO THE NEXUS 100 INSTRUCTION MANUAL(S) FOR FURTHER GUIDANCE WITH THIS PRODUCT (S).

### KIT CONTENTS:

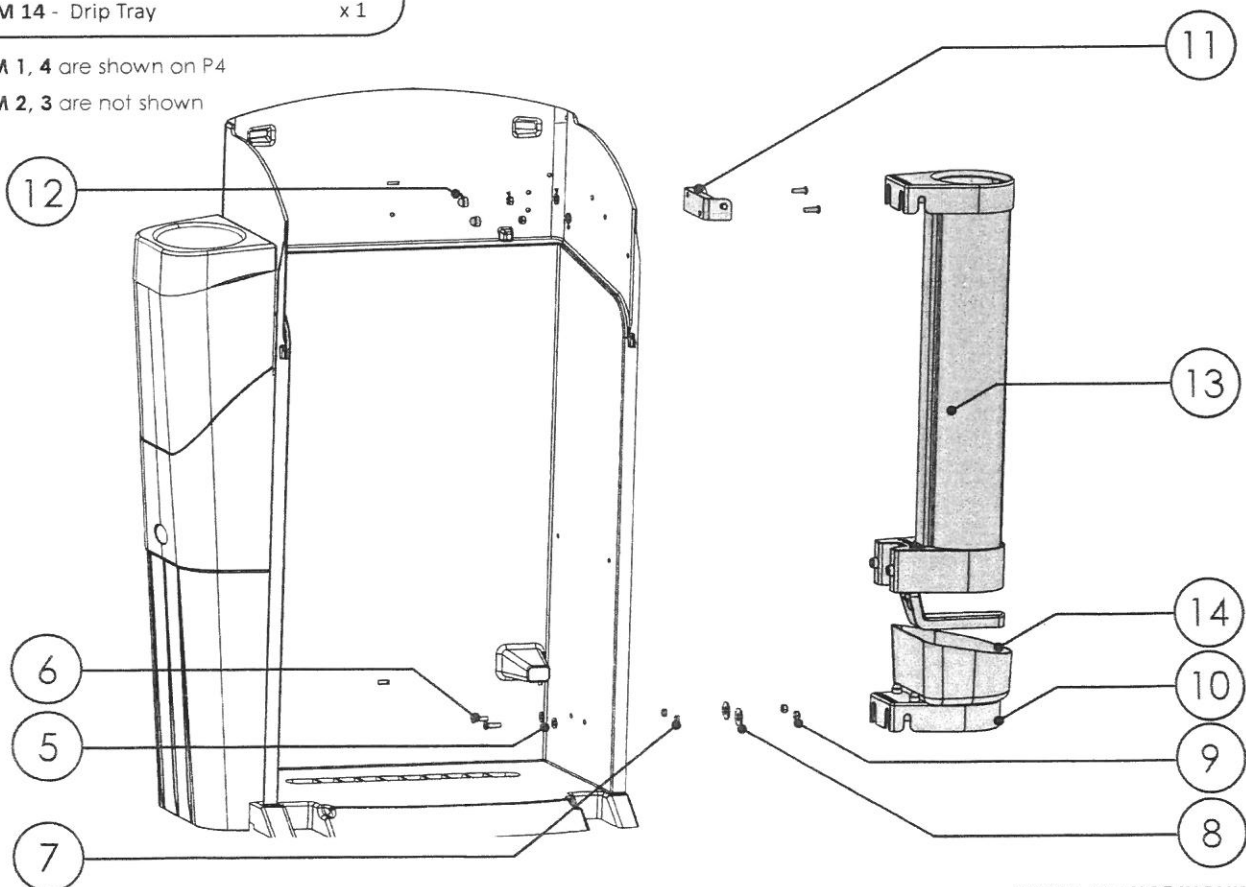
ITEM 1	- Base Paper Template	x 1
ITEM 2	- Screw M6 x 16mm	x 2
ITEM 3	- Nut M6	x 2
ITEM 4	- Top Paper Template	x 1
ITEM 5	- Washer M6 x 14mm	x 4
ITEM 6	- Screw M6 x 20mm	x 4
ITEM 7	- Spacer M6	x 2
ITEM 8	- Washer M6 x 18mm	x 2
ITEM 9	- Nyloc Nut M6	x 4
ITEM 10	- Drip Tray Bracket	x 1
ITEM 11	- Cup Stacker Bracket	x 1
ITEM 12	- Nut Cap	x 2
ITEM 13	- Cup Stacker	x 1
ITEM 14	- Drip Tray	x 1

### EQUIPMENT REQUIRED:

- Hand Drill with 6.5mm Drill Bit	x 1
- 10mm Spanner / Socket Set	x 1
- 4mm Allen Key	x 1
- Pencil	x 1

ITEM 1, 4 are shown on P4

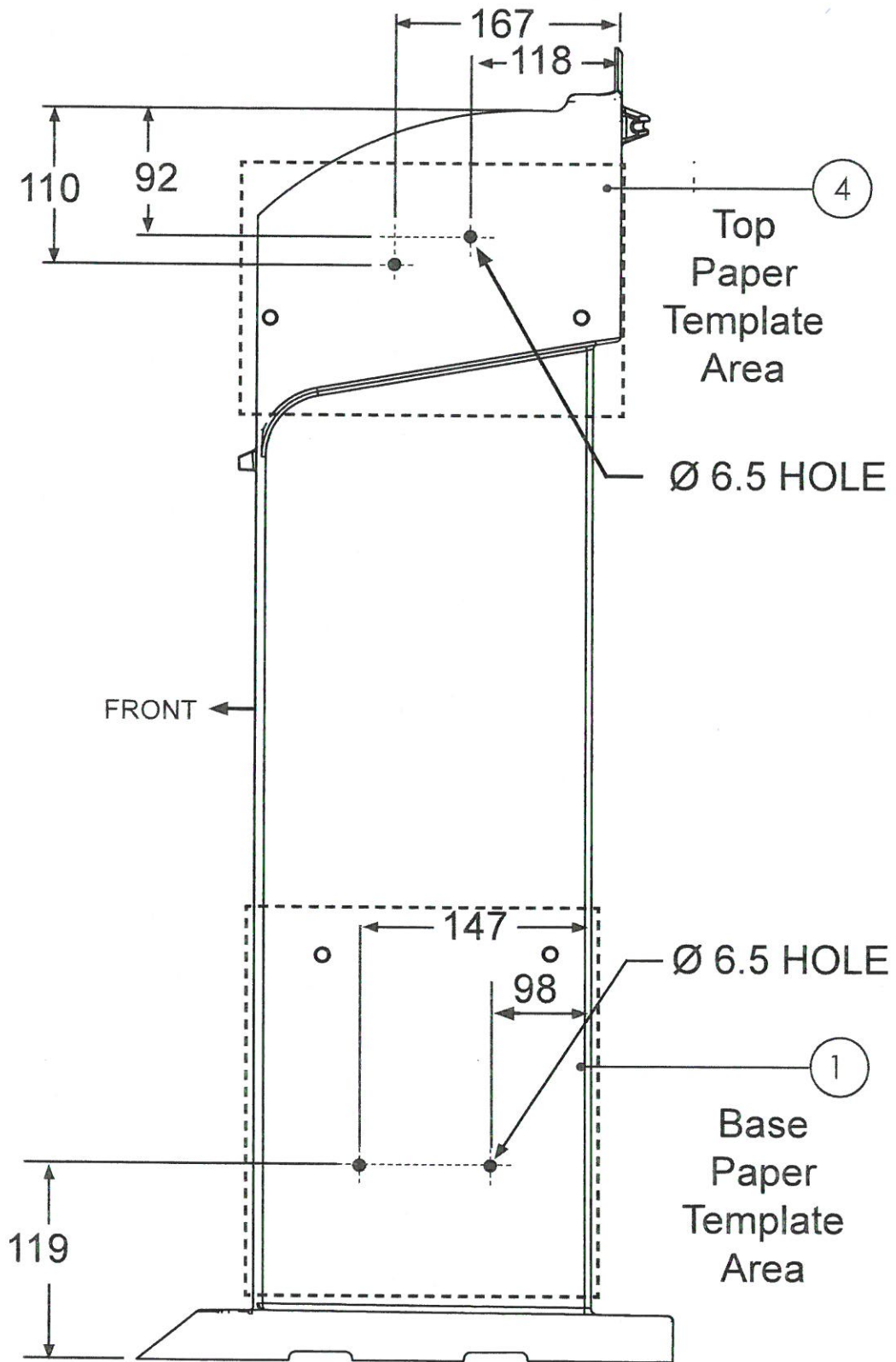
ITEM 2, 3 are not shown



NEXUS 100 NOT INCLUDED

# FIXING HOLE DRILL GUIDE

FOR FIXING STACKER TO THE RIGHT HAND SIDE  
OF NEXUS 100 BODY

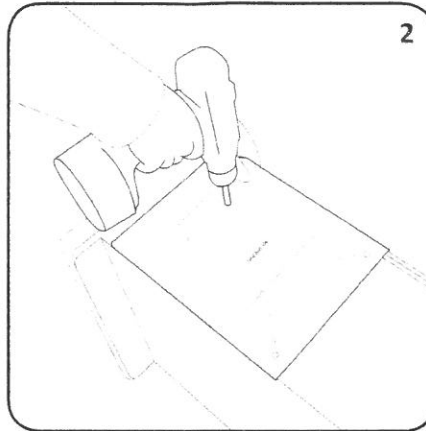


ALL MEASUREMENTS IN MM  
MEASUREMENTS TO HOLE CENTRES(CTR)

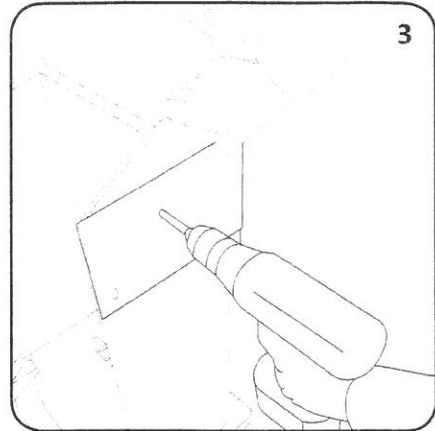
INSTALLATION MANUAL FOR FOR FIXING STACKER TO THE RIGHT HAND SIDE OF NEXUS 100 BODY



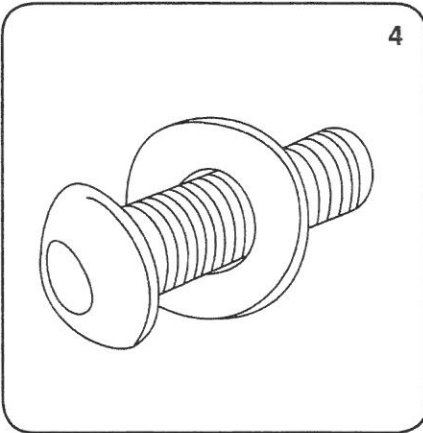
Place ITEM 1 in place on the right hand side of the bin body. Align the template with the holes in the body and poke through with a pencil. Use 2 x ITEM 2 & ITEM 3 to temporarily fix the template to the bin.



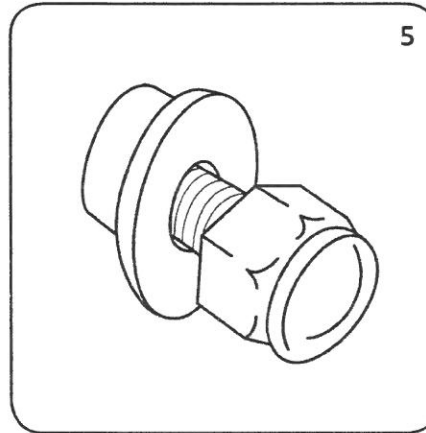
Lay the bin body on its side, drill the 2 new holes in the bin body as instructed on the template using the hand drill. Once complete, remove the fixings and the paper template from the bin body.



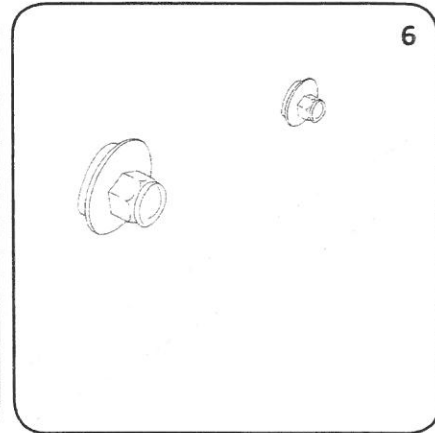
Open the lid and remove the door of the bin. Align ITEM 4 with the existing holes at the top of the Nexus 100 Body. Repeat step 1 & 2 to drill the 2 new holes at the top of the bin body.



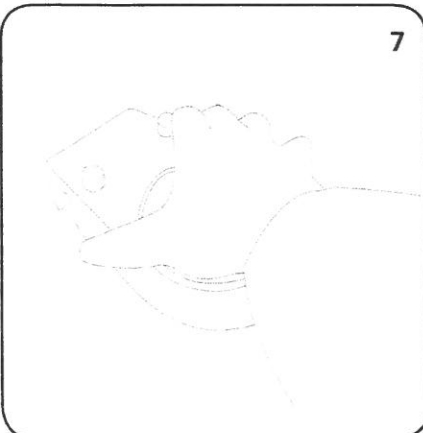
Place ITEM 5 on to ITEM 6. From the inside of the bin, push through one of the two fixing holes at the base of the bin body.



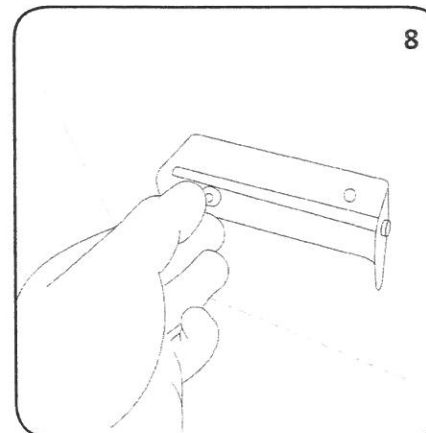
Place ITEM 7, 8 and 9 onto the Screw from the outside of the body.



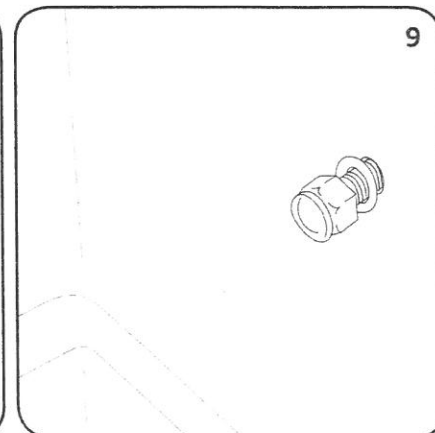
Firmly secure the fixings to the Nexus 100 body with a spanner and allen key. Repeat steps 4 - 5 for both sets of fixings.



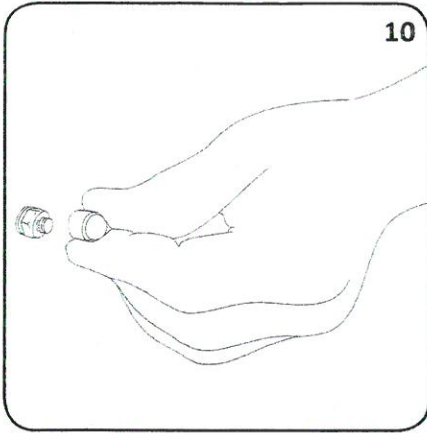
Firmly place ITEM 10 onto the two sets of fixings.



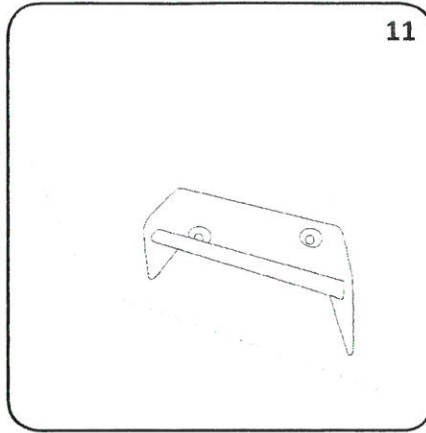
Align ITEM 11 over the top fixing holes on the outside of the Nexus 100. Place the screw M6 x20mm through one of the fixing holes.



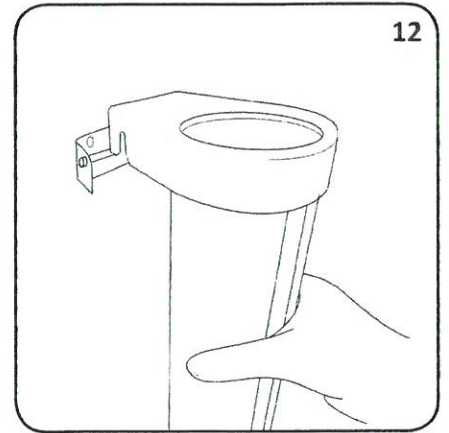
On the inside of the Nexus 100 Body place the washer M6 x 14mm and the nyloc nut M6 onto the screw



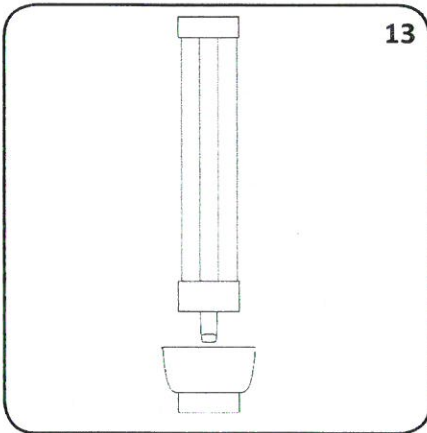
Tighten the nut with a spanner and allen key. Place ITEM 13 onto the nut.



Repeat steps 8 - 10 for both sets of fixings, securing the cup stacker bracket to the Nexus 100 .



Place ITEM 13 onto the cup stacker bracket.



Place ITEM 14 onto the drip tray bracket.



 **Glasdon** NEXUS IS A TRADEMARK OR REGISTERED TRADEMARK OF GLASDON GROUP OR ITS SUBSIDIARIES IN THE U.K. AND OTHER COUNTRIES

- A planned maintenance schedule or regular inspection is recommended, replacing components as necessary.
- Replacement components are available direct from GLASDON.
- GLASDON cannot be held responsible for claims arising from incorrect installation, unauthorised modifications or misuse of the product.

Issue 1 - December 2017 - Stock No. C000/0513 - DWG No. 07B-371-23

© Copyright DECEMBER 2017

Glasdon UK Ltd reserve the right to alter specifications without prior notice



**Glasdon U.K. Limited**

Preston New Road  
BLACKPOOL  
Lancashire FY4 4UL  
Tel. : 01253 600410  
Fax : 01253 792558  
e-mail: sales@glasdon-uk.co.uk  
web: www.glasdon.com